

Certified, Filed and or Recorded on
June 03, 2014 11:04 AM

BENTON COUNTY MINNESOTA
MARILYN J NOVAK
COUNTY RECORDER

By: BW

G -- V -- I

CERTIFICATE OF LOCATION OF GOVERNMENT CORNER

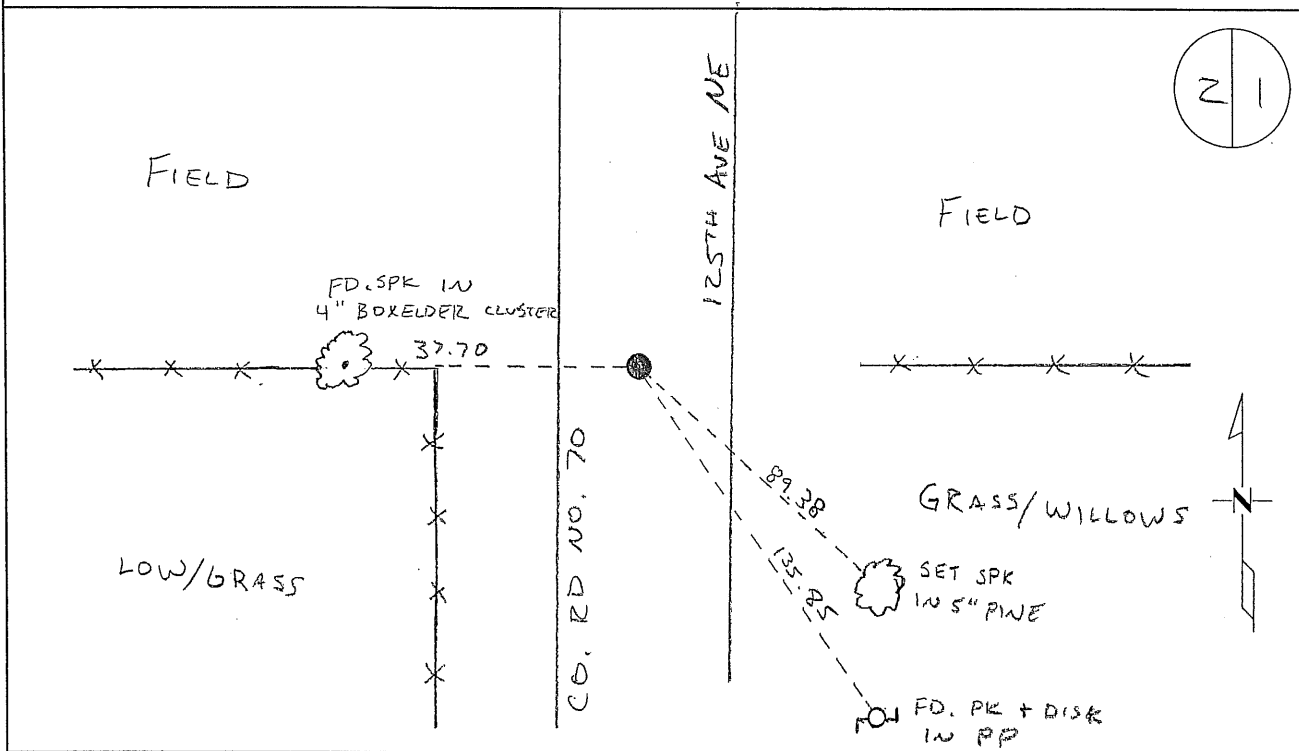
EAST QUARTER Corner of Section 2, Township 38, Range 29
4TH Principal Meridian, State of Minnesota, County of Benton

At the corner location shown on the sketch:

On 12/23/08 found a 1/2" IRON PIPE CAP # 40341

left monument as found lowered monument removed monument (explain)

On _____ placed an _____



Statement of evidence for this corner location is on back of this page.

I hereby certify that this document was researched and prepared by me or under my direct supervision and that I am a licensed Land Surveyor under the laws of the State of Minnesota.

Signature: Glenn C. Wittstock
Benton County Surveyor
License No. 19552

Date: 6-3-2014

Benton County Surveyor's Office
 Jerome C. Wittstock, County Surveyor
 Minnesota License No. 19552

Statement of Evidence:

B023

East Quarter Corner of Section 2, Township 38 North, Range 29 West, Alberta Township, 4th Principal Meridian, Benton County, Minnesota.

- 1855 Original US General Land Office survey set a wood post at this location and bearing trees were recorded.
- | | | |
|------------|--------|----------|
| 10" Birch | N 84 E | 27 links |
| 10" Linden | N 60 W | 10 links |
- 1916 Surveyor's Report to Alberta Township Board of Supervisors by J. P. Soderstrum, County Surveyor, concerning laying out of town road between Sections 1 and 2: Shows he could find no evidence of this corner and treated the corner as lost and set corner on a straight line between section corners and proportionate distance. Notes that this line swings the road west from the old location.
- 1944 County Engineer's Notebook No. 157 contains road survey for CAR No. 43 running from north to south along section line. No corner is shown, but fence line east-west is noted at 2750 feet south of the NE corner.
- 2008 The Benton County Surveyor's Office found a 1/2" iron pipe capped 40341 at the lost position fitting the 1944 distance north within 4 feet and falling on fences east and west as reported in 1944 in the north-south centerline laid out in 1916. Since the found iron pipe fits the historical information for the corner, it is accepted as marking the corner position.

Coordinates Obtained by GPS
 NAD 83 (1996 Adjustment)
 N - 193636.928
 E - 536631.559