

404571

Certified, Filed and or Recorded on
July 29, 2014 12:58 PM

BENTON COUNTY MINNESOTA
MARILYN J NOVAK
COUNTY RECORDER

By: CK

G - V - I

CERTIFICATE OF LOCATION OF GOVERNMENT CORNER

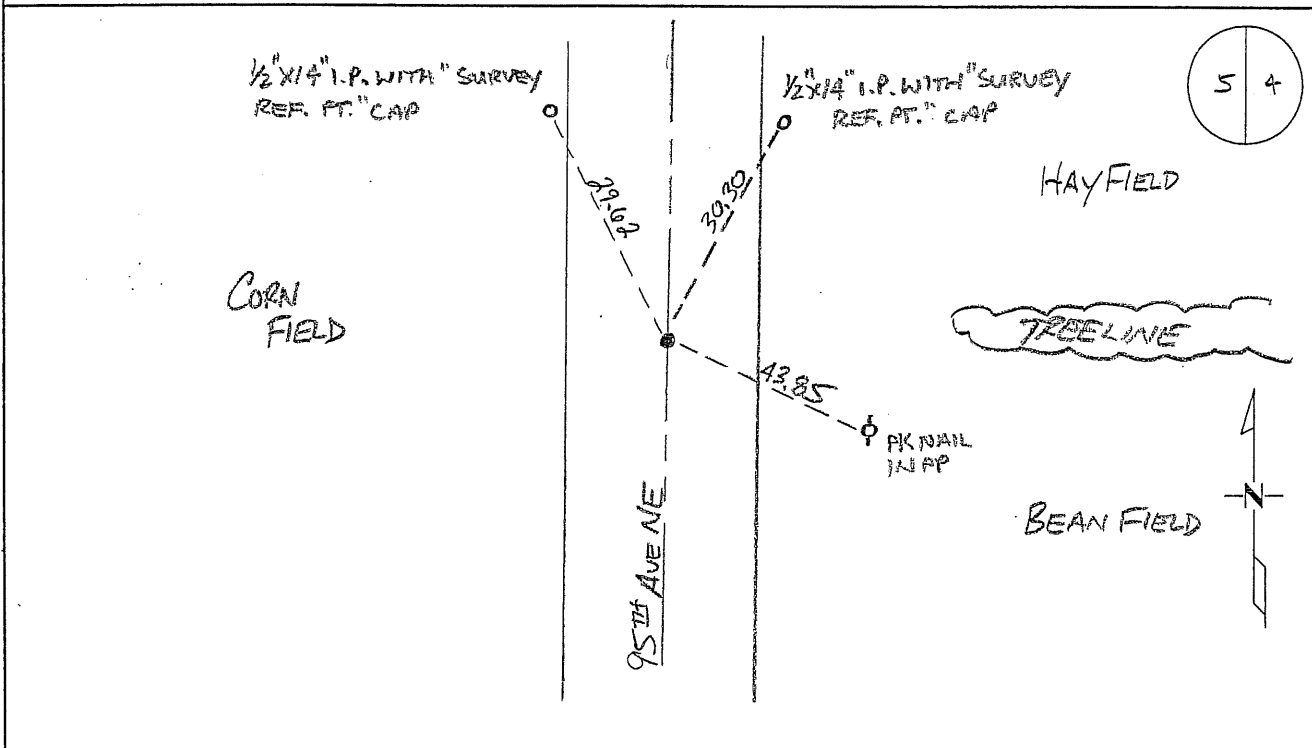
EAST QUARTER Corner of Section 5, Township 38, Range 29
4TH Principal Meridian, State of Minnesota, County of Benton

At the corner location shown on the sketch:

On 11/17/09 found a 1/2" IRON PIPE RLS # 19552

left monument as found lowered monument removed monument (explain)

On _____ placed an _____



Statement of evidence for this corner location is on back of this page.

I hereby certify that this document was researched and prepared by me or under my direct supervision and that I am a licensed Land Surveyor under the laws of the State of Minnesota.

Signature Jerome C. Wittstock
Benton County Surveyor
License No. 19552

Date: 7-29-2014

Benton County Surveyor's Office
 Jerome C. Wittstock, County Surveyor
 Minnesota License No. 19552

Statement of Evidence:

B053

East Quarter Corner of Section 5, Township 38 North, Range 29 West, Alberta Township, 4th Principal Meridian, Benton County, Minnesota.

1855 Original US General Land Office survey set a wood post at this location and bearing trees were recorded.

12" Sugar	N 61 ½ W	24 links
19" Sugar	S 53 E	24 links

2002 No resurvey information was found on this corner in the Benton County records.

2008 The Benton County Surveyor set a ½" iron pipe capped 19552 at the obliterated position of the intersection of the north-south centerline and fence line to the east. The distances to corners north and south are 2693.17 and 2646.18 respectively. The distance north is 30 feet long of the GLO distance and the distance south is 6 feet long. The closing distances along the north tier of sections of the townships in Benton County measure long of GLO distance pretty consistently in the County. The north-south centerline of 95th was accepted as marking the obliterated east-west position because the section corners to the north and south both fall in said centerline.

Coordinates Obtained by GPS
 NAD 83 (1996 Adjustment)
 N-193988.774
 E-520823.966

2009 The Benton County Surveyor's Office found the iron pipe set in 2008 and verified the coordinate position.