

Certified, Filed and or Recorded on
July 29, 2014 12:58 PM

BENTON COUNTY MINNESOTA
MARILYN J NOVAK
COUNTY RECORDER

By: OK

G - V - I

CERTIFICATE OF LOCATION OF GOVERNMENT CORNER

EAST QUARTER Corner of Section 7, Township 38, Range 29.

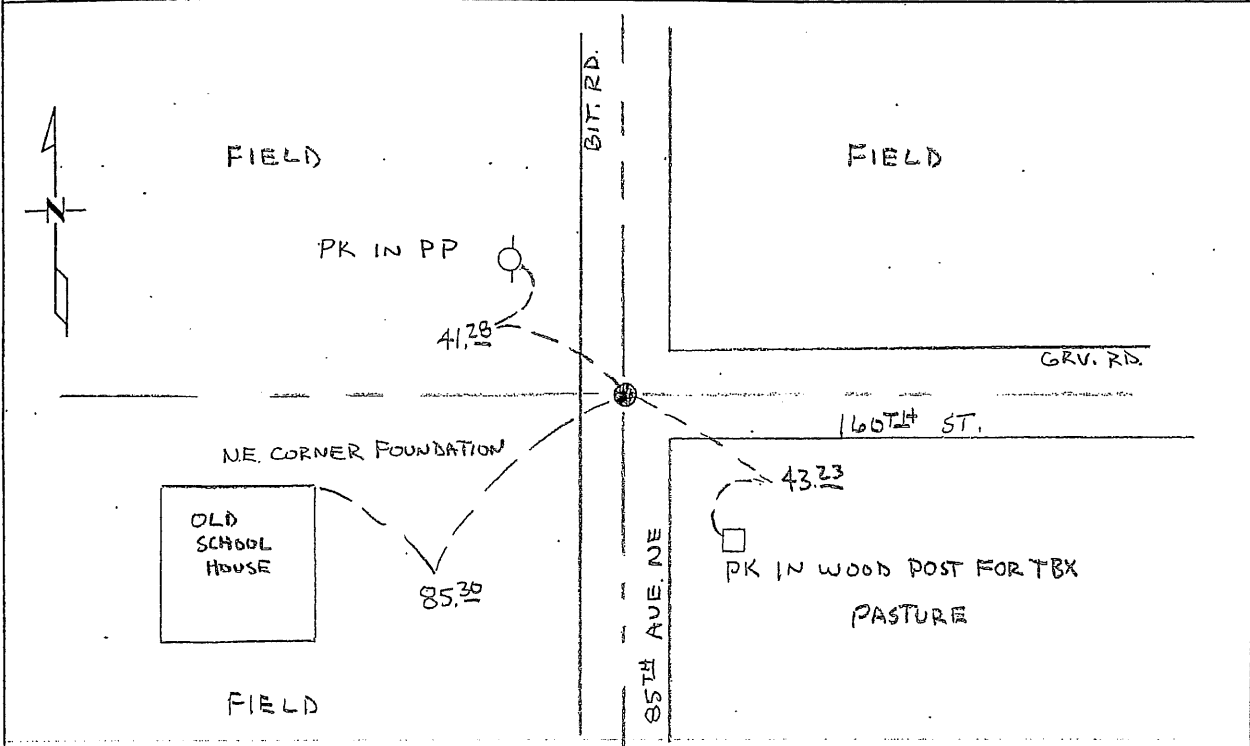
4TH Principal Meridian, State of Minnesota, County of Benton

At the corner location shown on the sketch:

On 2-16-07 found a 3/4" SOLID I.P.
DATE

left monument as found lowered monument removed monument (explain)

On _____ placed an _____
DATE



Statement of evidence for this corner location is on back of this page.

I hereby certify that this document was researched and prepared by me or under my direct supervision and that I am a licensed Land Surveyor under the laws of the State of Minnesota.

Signature Jerome C. Wittstock Date 7-29-2014 License No. 19552

Title: Land Surveyor Professional Engineer County Surveyor County Engineer

Benton County Surveyor's Office
 Jerome C. Wittstock, County Surveyor
 Minnesota License No. 19552

Statement of Evidence:**B073**

East Quarter Corner of Section 7, Township 38 North, Range 29 West, Alberta Township, 4th Principal Meridian, Benton County, Minnesota.

1855 Original US General Land Office survey set a wood post at the location and bearing trees were recorded.

7" Blk Oak	S 41 ½ W	15 links
8" W Birch	S 54 E	25 links

1930 County Engineer's notebook 79 gives distance of 5451.0 feet for the east line of the section with ¼ corner midway.

1931 County Surveyor's Book 2, page 252, Elletson surveyed the east-west ¼ line of Section 8. He notes a stake on the east side of a R. Oak for this corner with new ties:

NE Cor. Schoolhouse	SW	80.9 feet
Twin Elm	SE	138.0 feet

1935 County Engineer's Notebook No. 93 contains survey for Road running from south to north. Notes corner as a hub with town road east. Ties:

NE Cor. Found	SW	85.4'
Twin Elm	SE	137.9'

Stationing gives distances of 2759.2 feet to the SE corner and 2692.7 feet to the NE corner with a delta angle of 0-10' right.

1964 County Engineer's Notebook No. 246 contains survey for CSAH 11 running south to north on section line. Notes show corner marked by a small iron in center of road with town road east. Ties are those listed in 1967. Stationing gives distances of 2760.0 feet to the SE corner and 2693.4 feet to the NE corner with a delta angle of 0-10' right.

1967 County Surveyor's Record Book 2, page 250, notes the following ties to a small iron and notes Twin Elm SE at 138 feet. Gives a distance of 5451 feet between section corners and set the 1/16th corner to the north.

NE Cor Foundation		84.5
PP	NW	42.95
Cor PF	SW	46.7
Anchor Pole	SE	43.7

2007 The Benton County Surveyor's Office found a 3/4" iron rod in the north-south centerline of 85th Avenue NE on the centerline of 160th St to the east fitting the 1935 tie to the northeast corner of the schoolhouse foundation with 0.1 feet and also fitting the 1935 distances north and south within a foot. The iron rod is accepted as marking the obliterated corner position.

Coordinates Obtained by GPS
 NAD 83 (1996 Adjustment)
 N-188592.313
 E-515763.136