

Certified, Filed and or Recorded on
Nov. 04, 2008 AT 12:29PM

Signed: BW
MARILYN J NOVAK G V I
BENTON COUNTY MINNESOTA
MARILYN J NOVAK
COUNTY RECORDER

CERTIFICATE OF LOCATION OF GOVERNMENT CORNER

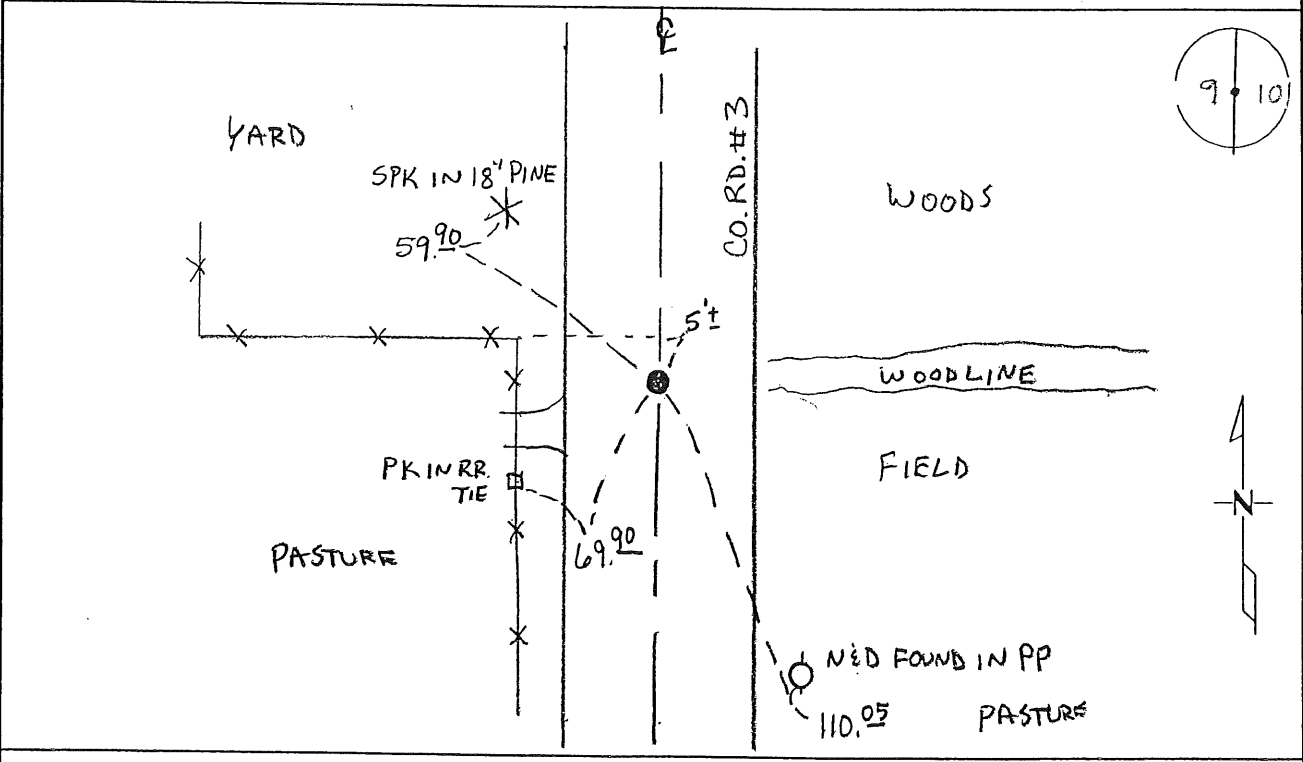
EAST QUARTER Corner of Section 9, Township 38, Range 29
4TH Principal Meridian, State of Minnesota, County of Benton

At the corner location shown on the sketch:

On 10-28-08 found a 1/2" OPEN IRON PIPE

left monument as found lowered monument removed monument (explain)

On _____ placed an _____



Statement of evidence for this corner location is on back of this page.

I hereby certify that this document was researched and prepared by me or under my direct supervision and that I am a licensed Land Surveyor under the laws of the State of Minnesota.

Signature [Handwritten Signature]
Deputy County Surveyor
License No. 43932

Date: 11/3/08

Statement of Evidence:

B093

East Quarter Corner of Section 9, Township 38 North, Range 29 West, Alberta Township, 4th Principal Meridian, Benton County, Minnesota.

1855 Original US General Land Office survey set a wood post at the location and bearing trees were recorded.

10" Birch	S 50 W	11 links
10" Aspen	N 89 E	20 links

1932 County Engineer's Notebook No. 66 contains road survey for SAR 3 running south to north. Notes show corner marked by a hub with fence lines east and west. Ties:

24" R. Oak	SW	52.6'
Twin ironwood	W	47.5'

Stationing gives distances of 2703.7 feet to the SE corner and 2657.8 feet to the NE corner.

1951 County Engineer's Notebook No. 190 contains survey of SAR No. 3 running from the south to north. Corner is shown as a hub in road fence lines running east and west. Same ties as listed below. Stationing gives distances of 2658.9 feet to the NE corner and 2694.0 feet to the SE corner with no delta angle.

County Surveyor's Record Book 2, page 254, notes ties to a hub:

FP	SW	39.2
FP	SE	37.3
6" Birch	W	60.8

1978 Paul Wellen, LS 10461, found a 1/2" I.P. at the centerline of a road north/south and in line a fence line west starting 500 feet west of the corner. He filed a Certificate of Location (#151869). Notes give measurements of 2694.85 feet to the SE corner and 2659.53 feet to the NE corner.

2008 Westwood Professional Services, Inc. found a 1/2" iron pipe fitting 1978 Wellen ties and distances to the NE and SE corners. 1/2" iron pipe is accepted as marking the obliterated position for this corner.

County Coordinates Obtained by GPS
NAD 83 (1996 Adjustment)
N-188599.549
E-526324.008

CERTIFICATE OF LOCATION OF GOVERNMENT CORNER

East 1/4 Corner of Section 9, Township 38, Range 29, _____ P.M.

STATE OF MINNESOTA, County of Benton

At the corner location shown on the sketch:

On _____ found a _____
DATE

left monument as found, lowered monument, removed monument (explain)

On _____ placed a _____
DATE

SKETCH OF REFERENCE TIES



Filed under West 1/4 Corner Section 10 , T 38 R 29

Certificate # 151869

Statement of evidence relative to this corner location is on back of page.

I hereby certify that this document and the data contained herein was prepared by me or under my direct supervision.

SIGNATURE DATE

Registration No. _____

- Land Surveyor, Professional Engineer
- County Surveyor, County Engineer

OFFICE OF THE REGISTER OF DEEDS
County of _____

I hereby certify that this document was filed in the Reg. of Deeds office at _____ .M. on the _____ day of _____ A.D., 19 ____

Register of Deeds _____

By _____, Deputy

DOCUMENT NO. _____

CERTIFICATE OF LOCATION OF GOVERNMENT CORNER

I did set the North^{1/4} Corner of Section 10, Township 38, Range 29, 4 P.M.

STATE OF MINNESOTA, County of Benton

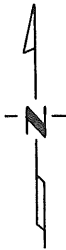
At the corner location shown on the sketch: was evidenced by 1/2" iron pipe, on the center line of east-west County Road No. 22 and on the center line of

On 10-17-78 found a north-south township road
DATE

left monument as found, lowered monument, removed monument (explain)

On _____ placed a 1/2" iron pipe
DATE

SKETCH OF REFERENCE TIES



Refer to next page

Statement of evidence relative to this corner location is on back of page.

I hereby certify that this document and the data contained herein was prepared by me or under my direct supervision.

Paul E. Wellen
SIGNATURE DATE

Registration No. 10461

- Land Surveyor, Professional Engineer
 County Surveyor, County Engineer

County Recorder
OFFICE OF THE REGISTER OF DEEDS
Benton
County of _____

I hereby certify that this document was filed in the Reg. of Deeds office at 10 A: .M. on the 26 day of March A.D., 19 79

Register of Deeds A. Johnson
By _____, Deputy

DOCUMENT NO. 151874

Should BE EAST 1/4 Corner Section 9, T38 R29 Index No. _____

CERTIFICATE OF LOCATION OF GOVERNMENT CORNER

I did set the West 1/4 Corner of Section 10, Township 38, Range 29 4 P.

STATE OF MINNESOTA, County of Benton

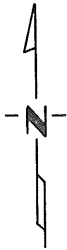
At the corner location shown on the sketch:

On 1-17-78 found a 1/2" iron pipe, on the center line of E north County Road No. 3 on east tree line, and approx
DATE 500 ft. east of west fence line

left monument as found, lowered monument, removed monument (explain)

On _____ placed a permanent marker consisting of a 1/2" * iron
DATE

SKETCH OF REFERENCE TIES



Refer to next page

Statement of evidence relative to this corner location is on back of page.

I hereby certify that this document and the data contained herein was prepared by me or under my direct supervision.

Paul E. Wellen

SIGNATURE

DATE

Registration No. 10461

Land Surveyor, Professional Engineer

County Surveyor, County Engineer

County Recorder ~~of~~
OFFICE OF THE REGISTER OF DEEDS
County of Benton

I hereby certify that this document was file
the Reg. of Deeds office at 10 .M. or
26 day of March A.D., 19

Register of Deeds Ed. Johnson
By _____, De

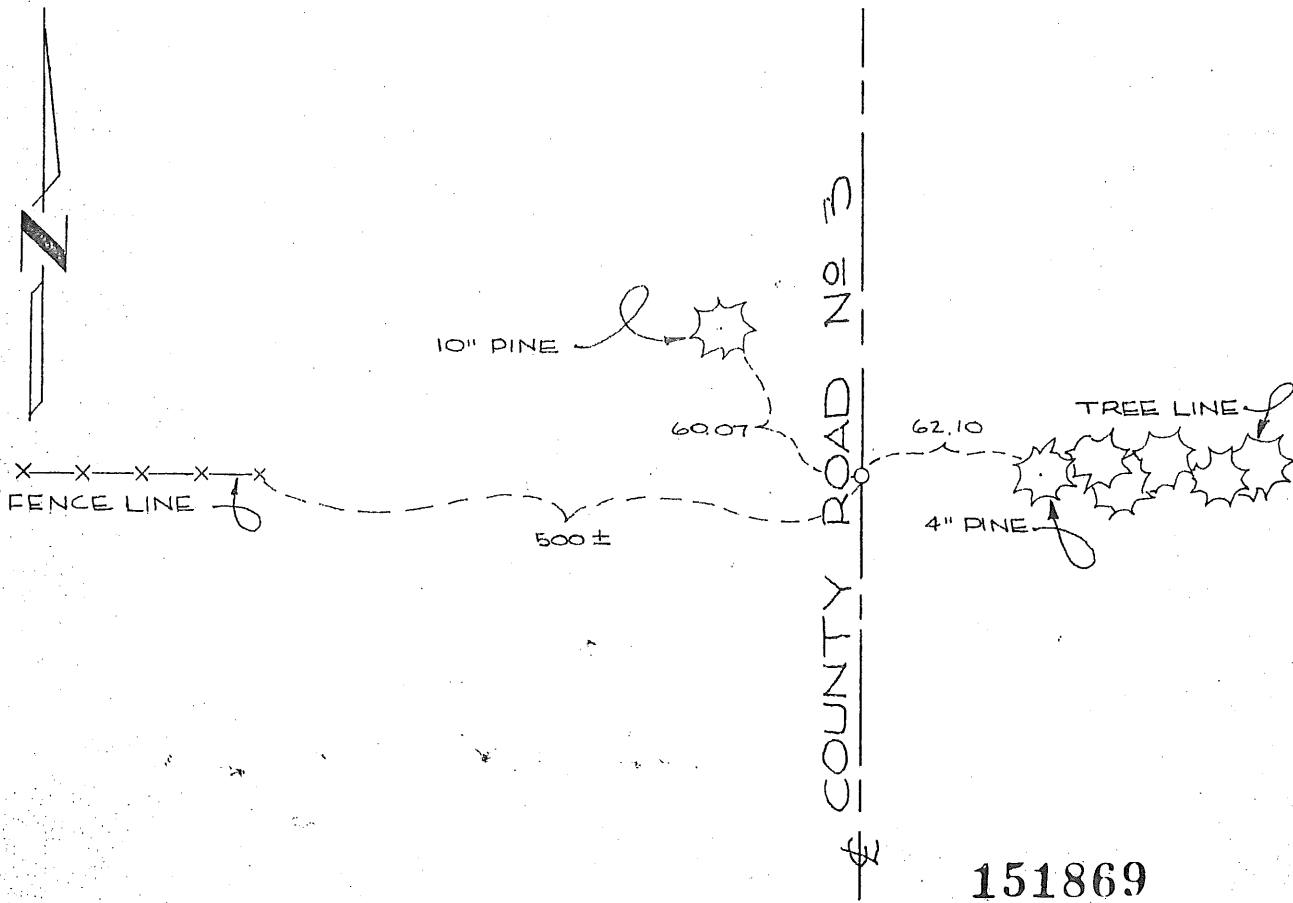
DOCUMENT NO. 151869

Should Be EAST 1/4 CORNER SECTION 9, T38 R29

CERTIFICATE OF LOCATION OF GOVERNMENT CORNER

I hereby certify that on the 17 day of October, 19 78
I did set the West 1/4 corner of Section 10,
Twp. 38, Rg. 29, Benton County, Minnesota, which
was evidenced by a 1/2" iron pipe, on the center line of north-south
County Road No. 3, on east tree line, and approx. 500 feet east of west
fence line.

I further certify that in order to perpetuate said corner I did
at the exact location thereof place a permanent marker consisting
of a 1/2" iron pipe and that
I did establish witness or reference monuments as shown below:



151869

I hereby certify that the above is true and correct and that I am a registered Land Surveyor under the laws of the State of Minnesota.

Dwight Nelson

Minn. Registration No. 10461

Office of the County Recorder,
Benton County, Minn.

I hereby certify that the within instrument was filed for record in this office on the 26th day of March, 19 79 at 10 a.m.

F.A. Johnson
County Recorder

By _____ Deputy.