

409196

Certified, Filed and or Recorded on
April 29, 2015 2:20 PM

BENTON COUNTY MINNESOTA
MARILYN J NOVAK
COUNTY RECORDER

By: OK

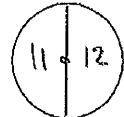
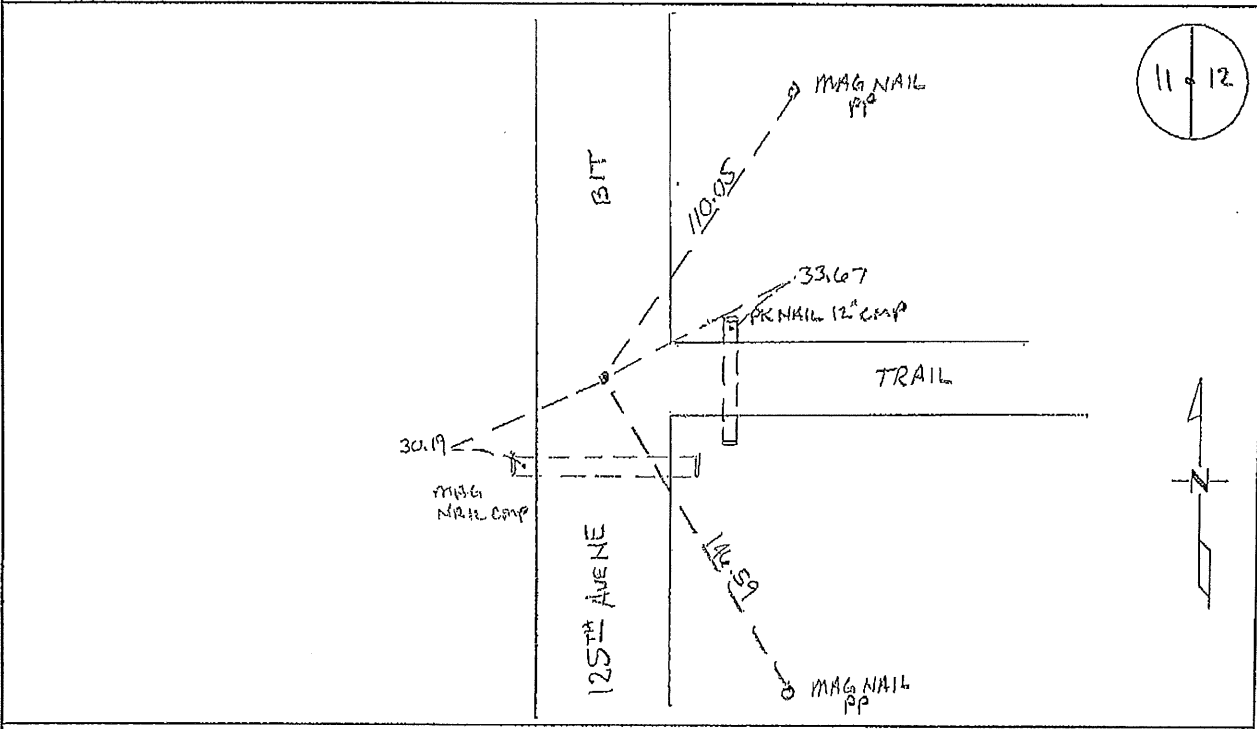
8 -- V -- I

CERTIFICATE OF LOCATION OF GOVERNMENT CORNER

EAST QUARTER Corner of Section 11, Township 38, Range 29
4TH Principal Meridian, State of Minnesota, County of Benton

At the corner location shown on the sketch:

- On 03/25/2015 found a CAST IRON MONUMENT ON NORTH/SOUTH CENTERLINE AND TRAIL EAST
- left monument as found lowered monument removed monument (explain)
- On _____ placed an _____



Statement of evidence for this corner location is on back of this page.

I hereby certify that this survey, plan, or report was prepared by me or under my direct supervision and that I am a duly Licensed Land Surveyor under the laws of the state of Minnesota.

Signature Jerome C. Wittstock
Jerome C. Wittstock, PS, CFedS, Benton County Surveyor
License No. 19552

Date: 4/29/2015

Benton County Surveyor's Office
 Jerome C. Wittstock, County Surveyor
 Minnesota License No. 19552

Statement of Evidence:

B113

East Quarter Corner of Section 11, Township 38 North, Range 29 West, Alberta Township, 4th Principal Meridian, Benton County, Minnesota.

1855 Original US General Land Office survey set a wood post at this location and bearing trees were recorded.

14" Elm	N 47 E	31 links
9" Blk Ash	S 22 W	21 links

1944 County Engineer's Notebook No. 157 contains road survey for CAR No. 43 running north to south along the section line. Corner is shown as a spike set in center of road with town road east and fence west. Ties:

FP	SE	49.55'
FP	NE	45.4'

Stationing gives distances of 2669.3 feet to the NE corner and 2609.1 feet to the SE corner with a delta angle of 1-09' right.

1960 Benton County Road plans note a PI at the intersection of roads north/south/east.

1993 Sidney Williamson, LS, found a 12-inch spike at the centerline of roads north/south/east. He replaced it with a cast iron monument and filed a Certificate of Location (#223494). He notes a distance of 2609.93 feet to the SE corner Sec 11 and a distance of 2669.25 feet to the NE corner Sec 11.

2007 The Benton County Surveyor's Office found a CIM in the north-south centerline of 125th Avenue NE on the centerline of a trail to the east. The distances north and south fit the 1944 distances within a foot with the delta angle fitting within about 30 seconds. The CIM is accepted as marking the corner position.

Coordinates Obtained by GPS
 NAD 83 (1996 Adjustment)
 N- 188291.533
 E- 536889.234

2015 The Benton County Surveyor's Office found the CIM and verified the 2007 coordinates.

CERTIFICATE OF LOCATION OF GOVERNMENT CORNER

EASTQUARTER Corner of Section 11, Township 38, Range 29, _____ P.M.

STATE OF MINNESOTA, County of BENTON

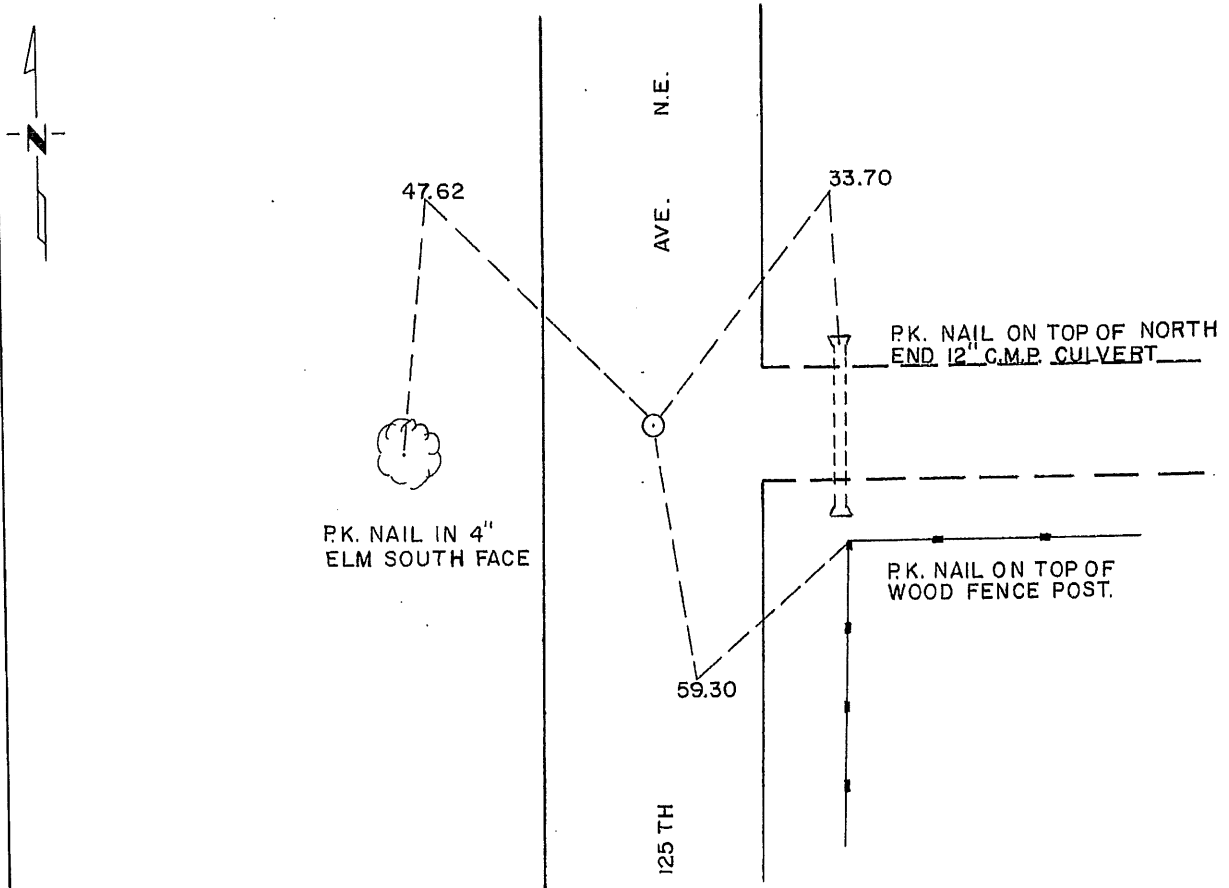
At the corner location shown on the sketch:

On 4-27-93 found a 60 PENNY NAIL
DATE

left monument as found, lowered monument, removed monument (explain)

On 6-17-93 placed a STANDARD CAST IRON MONUMENT
DATE

SKETCH OF REFERENCE TIES



Statement of evidence relative to this corner location is on back of page.

I hereby certify that this document and the data contained herein was prepared by me or under my direct supervision.

Sidney P. Williamson 5/21/94
SIGNATURE DATE

Registration No. 10218

Land Surveyor, Professional Engineer

County Surveyor, County Engineer

OFFICE OF THE COUNTY RECORDER

County of _____

I hereby certify that this document was filed in the Co. Recorders office at _____ .M. on the _____ day of _____ A.D., 19 _____

County Recorder _____

By _____, Deputy

DOCUMENT NO. _____

Statement of Evidence:

1. The original government survey was performed in 1855.
2. The 1960 Benton County Highway Department Road plans indicate a Point of Intersection at the intersection of C.S.A.H. No. 14 and Township Road to the east. It measured 2609.3 feet to the southeast corner.
3. In 1993, Williamson-Kotsmith, Inc. dug with a jackhammer at this location and found a 12" spike at this location. It measured 2609.93 feet to southeast corner of Section 11 and 2669.25 feet to the northeast corner.
4. On June 17, 1993, Williamson-Kotsmith, Inc. set a Standard Cast Iron Monument at this location.

223494

OFFICE OF
BENTON COUNTY RECORDER
BENTON COUNTY, MN
CERTIFIED TO BE FILED
AND/OR RECORDED ON

JUN 17 1 10 PM '94

ALICE G. ENGELMEYER
COUNTY RECORDER

BY Jed DEPUTY