

409201

Certified, Filed and or Recorded on
April 29, 2015 2:20 PM

BENTON COUNTY MINNESOTA
MARILYN J NOVAK
COUNTY RECORDER

By: CR

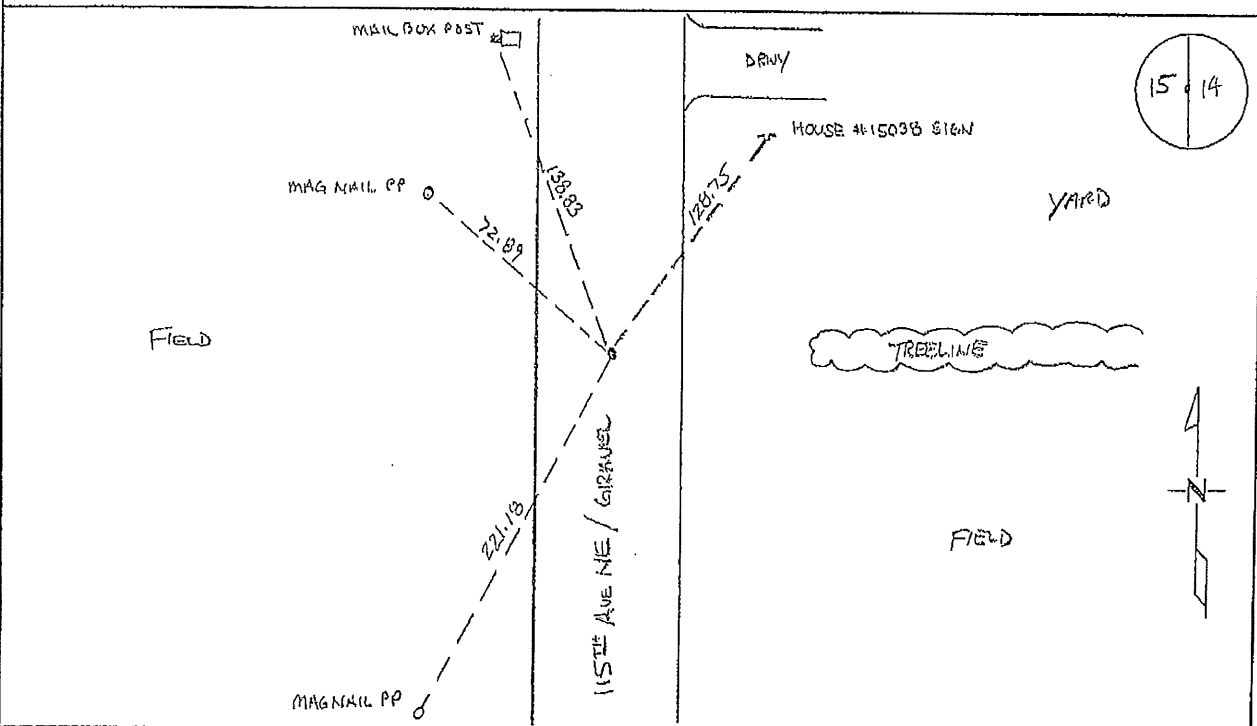
G - V - 1

CERTIFICATE OF LOCATION OF GOVERNMENT CORNER

EAST QUARTER Corner of Section 15, Township 38, Range 29
4TH Principal Meridian, State of Minnesota, County of Benton

At the corner location shown on the sketch:

- On 03/25/2015 found a 1/2" ILLIBLE CAP ON NORTH/SOUTH CENTERLINE AND TREELINE EAST
- left monument as found lowered monument removed monument (explain)
- On _____ placed an _____



Statement of evidence for this corner location is on back of this page.

I hereby certify that this survey, plan, or report was prepared by me or under my direct supervision and that I am a duly Licensed Land Surveyor under the laws of the state of Minnesota.

Signature Jerome C. Wittstock
Jerome C. Wittstock, PS, CFedS, Benton County Surveyor
License No. 19552

Date: 4/29/2015

Benton County Surveyor's Office
 Jerome C. Wittstock, County Surveyor
 Minnesota License No. 19552

Statement of Evidence:

B153

East Quarter Corner of Section 15, Township 38 North, Range 29 West, Alberta Township, 4th Principal Meridian, Benton County, Minnesota.

1855 Original US General Land Office survey set a wood post at this location and bearing trees were recorded.

14" Aspen	S 72 W	27 links
28" Bur Oak	N 26 E	40 links

1907 County Road Book, pages 4-6, contains a road survey by Felix Parent, County Surveyor, for State Road. Survey shows corner found and road run north-south. Notes state: "Drove 1 1/4" x 16" gas pipe in place of old post". Stationing gives distance of 2716 feet to the SE corner and 2643 feet to the NE corner of Section 15.

1912 County Surveyor's Record Book 2, page 231, notes the following reference ties to a post in a road:

Cor Post	E	29
----------	---	----

2008 The Benton County Surveyor's Office found a 1/2" iron pipe capped 12236 in the north-south centerline of a gravel road on a fence to the east. The 1/2" iron pipe measures 2714.07 feet south to a CIM at the southeast corner and 2648.97 feet north to the northeast corner of Section 15.

Coordinates Obtained by GPS
 NAD 83 (1996 Adjustment)
 N-183134.206
 E-531751.682

2012 The Benton County Surveyor's Office found the 1/2" iron pipe capped 12236. The iron was pulled and reset while looking for the 1 1/4" iron pipe called for in 1907. Nothing was found with a metal locator. The corner falls in a cut section of road so road construction eliminated any evidence of the 1907 iron pipe. The 1/2" iron pipe is accepted as marking the obliterated corner position with distance south fitting well with the 1907 distance and the fence east supporting the corner post called for in 1912.

2015 The Benton County Surveyor's Office found the 1/2" iron pipe and verified the 2008 coordinates.