

409202

Certified, Filed and or Recorded on
April 29, 2015 2:20 PM

BENTON COUNTY MINNESOTA
MARILYN J NOVAK
COUNTY RECORDER

By: OK

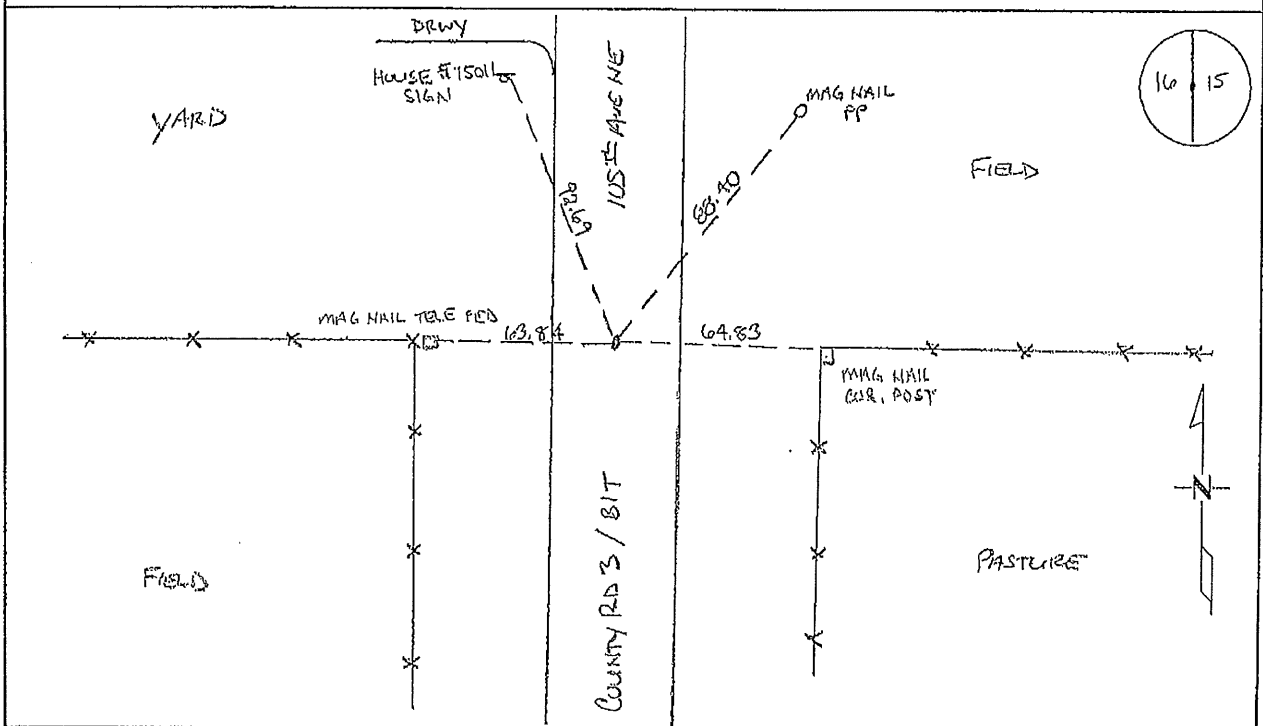
G -- V -- I

CERTIFICATE OF LOCATION OF GOVERNMENT CORNER

EAST QUARTER Corner of Section 16, Township 38, Range 29
4TH Principal Meridian, State of Minnesota, County of Benton

At the corner location shown on the sketch:

- On 03/25/2015 found a 1/2" IRON PIPE CAPPED RLS 12236 ON NORTH/SOUTH CENTERLINE AND FEASLINE EAST AND WEST
- left monument as found lowered monument removed monument (explain)
- On _____ placed an _____



Statement of evidence for this corner location is on back of this page.

I hereby certify that this survey, plan, or report was prepared by me or under my direct supervision and that I am a duly Licensed Land Surveyor under the laws of the state of Minnesota.

Signature Jerome C. Wittstock
Jerome C. Wittstock, PS, CFedS, Benton County Surveyor
License No. 19552

Date: 4/29/2015

Benton County Surveyor's Office
 Jerome C. Wittstock County Surveyor
 Minnesota License No. 19552

Statement of Evidence:

B163

East Quarter Corner of Section 16, Township 38 North, Range 29 West, Alberta
 Township, 4th Principal Meridian, Benton County, Minnesota.

1855 Original US General Land Office survey set a wood post at the location and bearing trees were recorded.

9" Blk Oak	S 63 W	22 links
10" W Birch	N 52 E	18 links

1932 County Engineer's Notebook No. 66 contains road survey for SAR 3 running south to north. Notes show corner marked by a hub set in road with fence lines east and west. Ties:

TP	SW	40.6'
Cor. FP	W	34.9'

Stationing gives distances of 2751.5 feet to the SE corner and 2771.0 feet to the NE corner.

County Surveyor's Record Book 2, page 268, notes the same ties to a hub.

1951 County Engineer's Notebook No. 190 contains survey of SAR No. 3 running from the south to north. Corner is shown as a hub set in road with fence lines running east and west. Ties:

PP	NE	89.3'
6" Ash	SE	99.1

Stationing gives distances of 2784.3 feet to the NE corner and 2752.4 feet to the SE corner with a delta angle of 0-32' right.

County Surveyor's Record Book 2, page 268, notes the same ties to a hub.

2012 The Benton County Surveyor's Office found a 1/2" iron pipe capped 12236 in the north-south centerline of CSAH 3 on fence east and west. Fragments of an old stump were found South 83 degrees East 99.1 feet from the found iron pipe, correlating with the 1951 tie. The distance south measures 2753.17 to a CIM at the southeast corner of Section 16 comparing to 2751.5 in 1932 and 2752.4 feet in 1951. The distance north to a 1/2" open iron pipe measures 2780.68 feet compared to 2771.0 in 1932 and 2784.3 in 1951. Since the distances north and south fit reasonably with the earlier resurvey distances and the corner falls in the north-south centerline on fences east and west, the found iron pipe capped 12236 is accepted as marking the obliterated corner position.

Coordinates Obtained by GPS

NAD 83 (1996 Adjustment)

N-183125.295

E-526412.269

2015 The Benton County Surveyor's Office found the 1/2" iron pipe capped 12236 and verified the 2012 coordinates.