

Certified, Filed and or Recorded on August 12, 2014 1:21 PM

BENTON COUNTY MINNESOTA
MARILYN J NOVAK
COUNTY RECORDER

By: CK

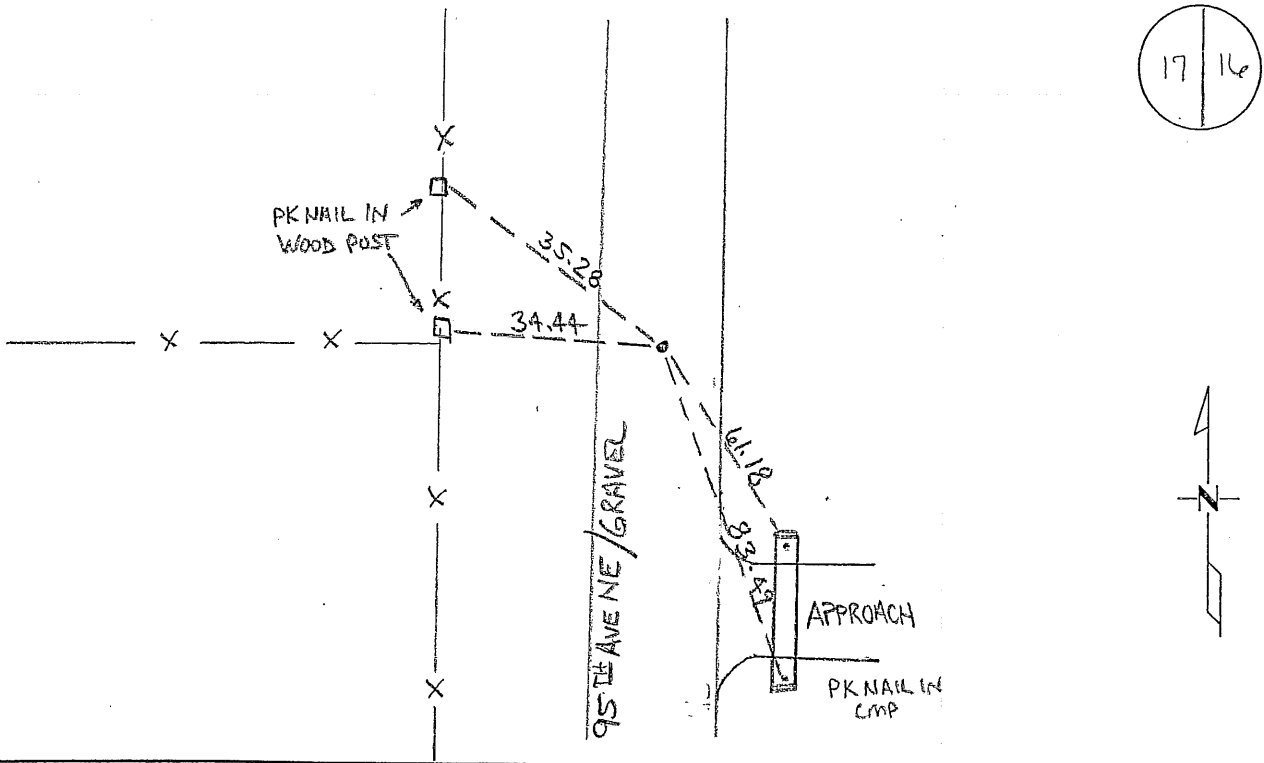
G - V - I

CERTIFICATE OF LOCATION OF GOVERNMENT CORNER

EAST QUARTER Corner of Section 17, Township 38, Range 29
4TH Principal Meridian, State of Minnesota, County of Benton

At the corner location shown on the sketch:

- On 11/11/08 found a SPK WITH RIBBON WITH 1/2" IRON PIPE BELOW IT,
EXCAVATED 12' E-W X 15' N-S X 5' DEEP HOLE AND FOUND NO EVIDENCE
- left monument as found lowered monument removed monument (explain)
- On 06/09/09 placed an 1/2" IRON PIPE RLS# 19552 IN SAME LOCATION
AS FOUND IRON



Statement of evidence for this corner location is on back of this page.

I hereby certify that this document was researched and prepared by me or under my direct supervision and that I am a licensed Land Surveyor under the laws of the State of Minnesota.

Signature Jessie C. Wittstock
Benton County Surveyor
License No. 19552

Date: 7-29-2014

Benton County Surveyor's Office
 Jerome C. Wittstock, County Surveyor
 Minnesota License No. 19552

Statement of Evidence:**B173**

East Quarter Corner of Section 17, Township 38 North, Range 29 West, Alberta Township, 4th Principal Meridian, Benton County, Minnesota.

- 1855 Original US General Land Office survey set a wood post at the location and bearing tree was recorded.
 10" Tamarack S 28 ½ E 185 links
- 1915 County Surveyor's Record Book 2, page 270, and Record Book A, Map No. 14, shows a survey of town road between Sections 16 and 17 by J.P. Soderstrum. He found old Gov't BT, Tam. SE with marks plain, and set oak stake with new tie:
 9" Poplar S 9-15 W 263 links
 He measured 41.17 chains (2717.22 feet) to the NE corner and 42.91 chains (2832.06 feet) to the SE corner.
- 2001 Westwood Professional Services, Inc. found a nail with ribbon at approximate corner location. Westwood measured 2712.92 feet to the approximate NE corner and 2829.00 feet to the SE corner.
 County Coordinates Obtained by GPS (Nail With Ribbon with 1/2 - inch iron pipe under it)
 NAD 83 (1996 Adjustment)
 N-183173.261
 E-521134.634
- 2008 Westwood Professional Services, Inc. found a spike with ribbon in the centerline of 95th Ave. NE in line with a fence to the west. We measured 2712.92 feet to the approximate NE corner and 2829.00 feet to the SE corner. These distances agree with 1915 County Surveyor distances and spike is accepted as marking the obliterated position for this corner. Coordinates obtained by GPS coincide with 2001 position.
- NOTE: Corner will be excavated in the Spring of 2009 to look for oak stake set in 1915 to verify spikes position.
- 2009 Excavated 12-foot n-s by 8-foot e-w by 5-foot deep hole to original ground. A 1/2-inch iron pipe was found directly under the found spike. Hole filled with water with many stones, perhaps a rock pile at one time, found at original ground. No evidence of a corner monument was found. Since the nail and iron fall in the north-south centerline on a well-established fence to the west and fit the distances north and south from 1915 proportionately within 2 feet, a 1/2-inch iron pipe capped 19552 was set to mark the obliterated position. The 2001 coordinates were verified.

CERTIFICATE OF LOCATION OF GOVERNMENT CORNER

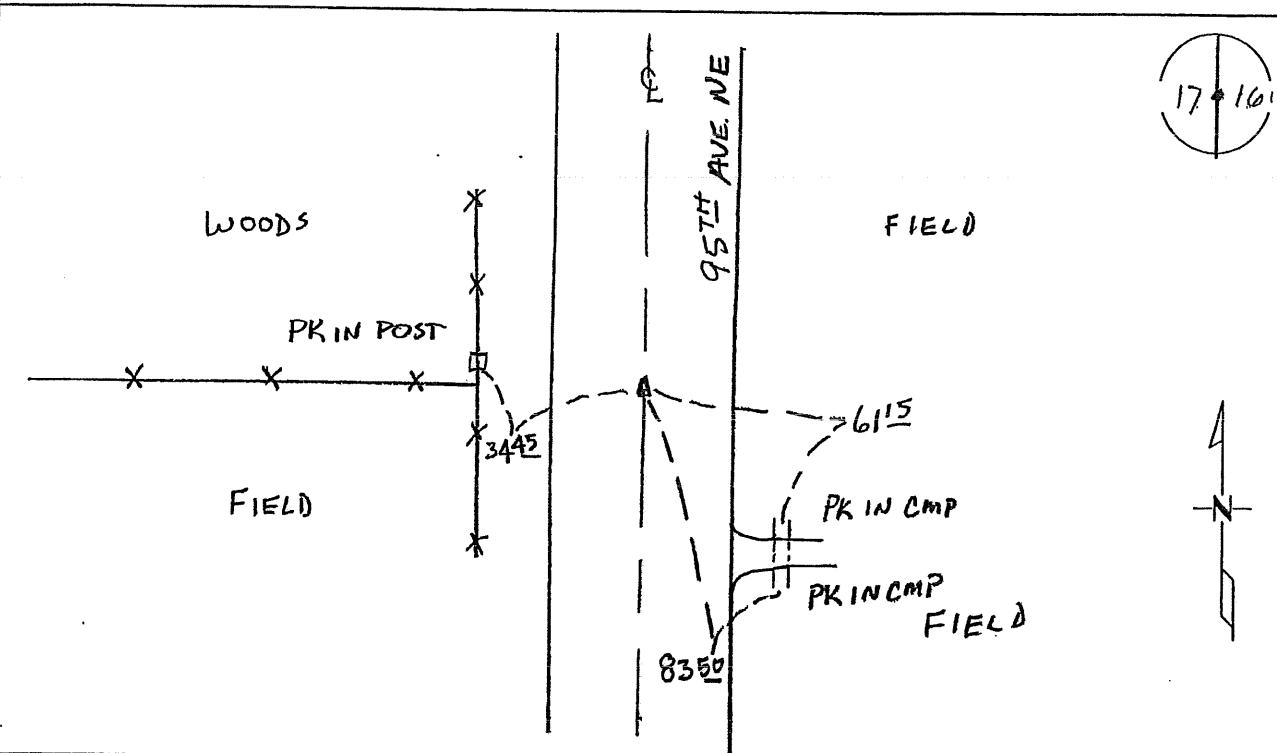
EAST QUARTER Corner of Section 17, Township 38, Range 29
4TH Principal Meridian, State of Minnesota, County of Benton

At the corner location shown on the sketch:

On 11-11-08 found a SPK WJ RIBBON

left monument as found lowered monument removed monument (explain)

On _____ placed an _____



Statement of evidence for this corner location is on back of this page.

I hereby certify that this document was researched and prepared by me or under my direct supervision and that I am a licensed Land Surveyor under the laws of the State of Minnesota.

Signature Ch. Kugel
Deputy County Surveyor
License No. 43932

Date: 12/17/08

Benton County Surveyor's Office
 Chris Hoglund, Deputy County Surveyor
 Minnesota License No. 43932

Statement of Evidence:**B173**

East Quarter Corner of Section 17, Township 38 North, Range 29 West, Alberta Township, 4th Principal Meridian, Benton County, Minnesota.

- 1855 Original US General Land Office survey set a wood post at the location and bearing tree was recorded.
 10" Tamarack S 28 ½ E 185 links
- 1915 County Surveyor's Record Book 2, page 270, and Record Book A, Map No. 14, shows a survey of town road between Sections 16 and 17 by J.P. Soderstrum. He found old Gov't BT, Tam. SE with marks plain, and set oak stake with new tie:
 9" Poplar S 9-15 W 263 links
 He measured 41.17 chains (2717.22 feet) to the NE corner and 42.91 chains (2832.06 feet) to the SE corner.
- 2001 Westwood Professional Services, Inc. found a nail and a ribbon at approximate corner location. Measured 2712.92 feet to the approximate NE corner and 2829.00 feet to the SE corner.
 County Coordinates Obtained by GPS (Nail With Ribbon)
 NAD 83 (1996 Adjustment)
 N-183173.261
 E-521134.634
- 2008 Westwood Professional Services, Inc. found a spike with ribbon in the centerline of 95th Ave. NE in line with a fence to the west. We measured 2712.92 feet to the approximate NE corner and 2829.00 feet to the SE corner. These distances agree with 1915 County Surveyor distances and spike is accepted as marking the obliterated position for this corner. Coordinates obtained by GPS coincide with 2001 position.

NOTE: Corner will be excavated in the Spring of 2009 to look for oak stake set in 1915 to verify spikes position.

A 362624

Certified, Filed and or Recorded on
Dec. 26, 2008 AT 10:39AM

Signed: CK
MARILYN J NOVAK ~~Q V I~~
BENTON COUNTY MINNESOTA
MARILYN J NOVAK
COUNTY RECORDER

DOCUMENT COVER SHEET

Document Name: **GOVERNMENT CORNER**

BENTON COUNTY OF

THE PUBLIC

Document Date: **12/17/2008**

This cover sheet is being attached to this document to provide room for recording information and is considered part of this document