

Certified, Filed and or Recorded on  
Mar. 11, 2009 AT 10:21AM

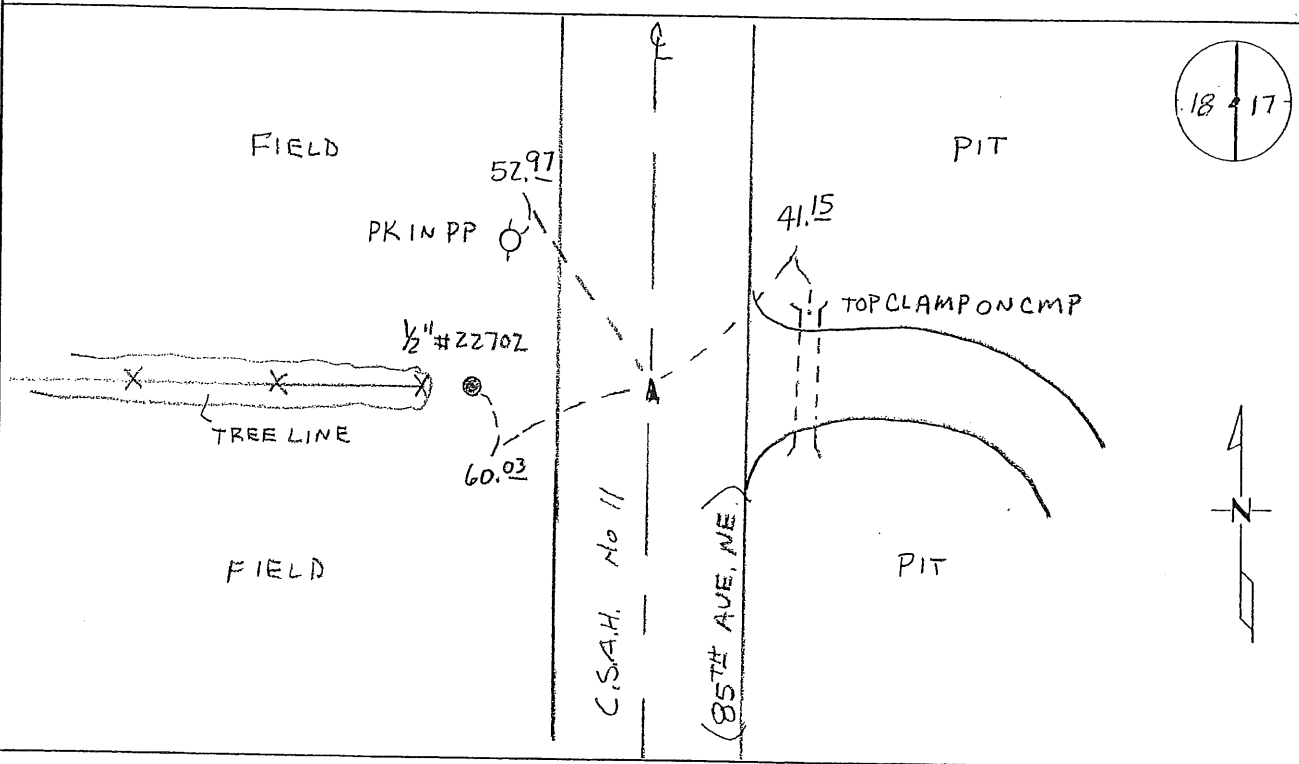
Signed: [Signature]  
MARILYN J NOVAK G V I  
BENTON COUNTY MINNESOTA  
MARILYN J NOVAK  
COUNTY RECORDER

# CERTIFICATE OF LOCATION OF GOVERNMENT CORNER

EAST QUARTER Corner of Section 18, Township 38, Range 29  
4TH Principal Meridian, State of Minnesota, County of Benton

At the corner location shown on the sketch:

- On 11-17-08 found a PK NAIL
- left monument as found       lowered monument       removed monument (explain)
- On 12-11-08 placed a PK NAIL WITH BENTON COUNTY DISK



Statement of evidence for this corner location is on back of this page.

I hereby certify that this document was researched and prepared by me or under my direct supervision and that I am a licensed Land Surveyor under the laws of the State of Minnesota.

Signature [Signature]  
Deputy County Surveyor  
License No. 43932

Date: 3/6/09

Benton County Surveyor's Office  
 Chris Hogleund, Deputy County Surveyor  
 Minnesota License No. 43932

**Statement of Evidence:****B183**

East Quarter Corner of Section 18, Township 38 North, Range 29 West, Alberta Township, 4<sup>th</sup> Principal Meridian, Benton County, Minnesota.

1855 Original US General Land Office survey set a wood post at the location and bearing tree was recorded.

14" Blk Oak	S 63 E	21 links
12" Blk Oak	S 34 W	20 links

1935 County Engineer's Notebook No. 93 contains survey for Road running from south to north. Notes approximate corner as a POT marked by a spike. Ties:

Cor F.P	W	22.2
3 <sup>rd</sup> FP	S	28.9
Hub	SW	44.3
Hub	W	35.05

Stationing gives distances of 2718.6 feet to the SE corner and 2734.6 feet to the NE corner.

1964 County Engineer's Notebook No. 246 contains survey for CSAH 11 running south to north on section line. Notes do not show a corner, but note a spike set for a POT on fence line west at stationing which gives distances of 2723.2 feet to the SE corner and 2732.1 feet to the NE corner.

1990 William Lunser, LS 9394, notes per Certificate of Location for the NE corner of Sec. 18 (Doc. No. 201528) a distance of 2732.01 feet to the NE corner Sec. 18.

2008 Westwood Professional Services, Inc. found a PK nail in the centerline of CSAH No. 11 in line with fence to west. No 1935 ties remain. Measured 2732.10 feet to the NE corner and 2723.46 feet to the SE corner of Section 18 which agrees with 1964 County Engineer's distances. PK is accepted as marking the obliterated position for this corner. Replaced PK nail with Benton County disk.

Coordinates Obtained by GPS  
 NAD 83 (1996 Adjustment)  
 N-183102.056  
 E-515897.161