

Certified, Filed and or Recorded on  
May 24, 2011 1:26 PM

BENTON COUNTY MINNESOTA  
MARILYN J NOVAK  
COUNTY RECORDER

By: BW

G-V-1

### CERTIFICATE OF LOCATION OF GOVERNMENT CORNER

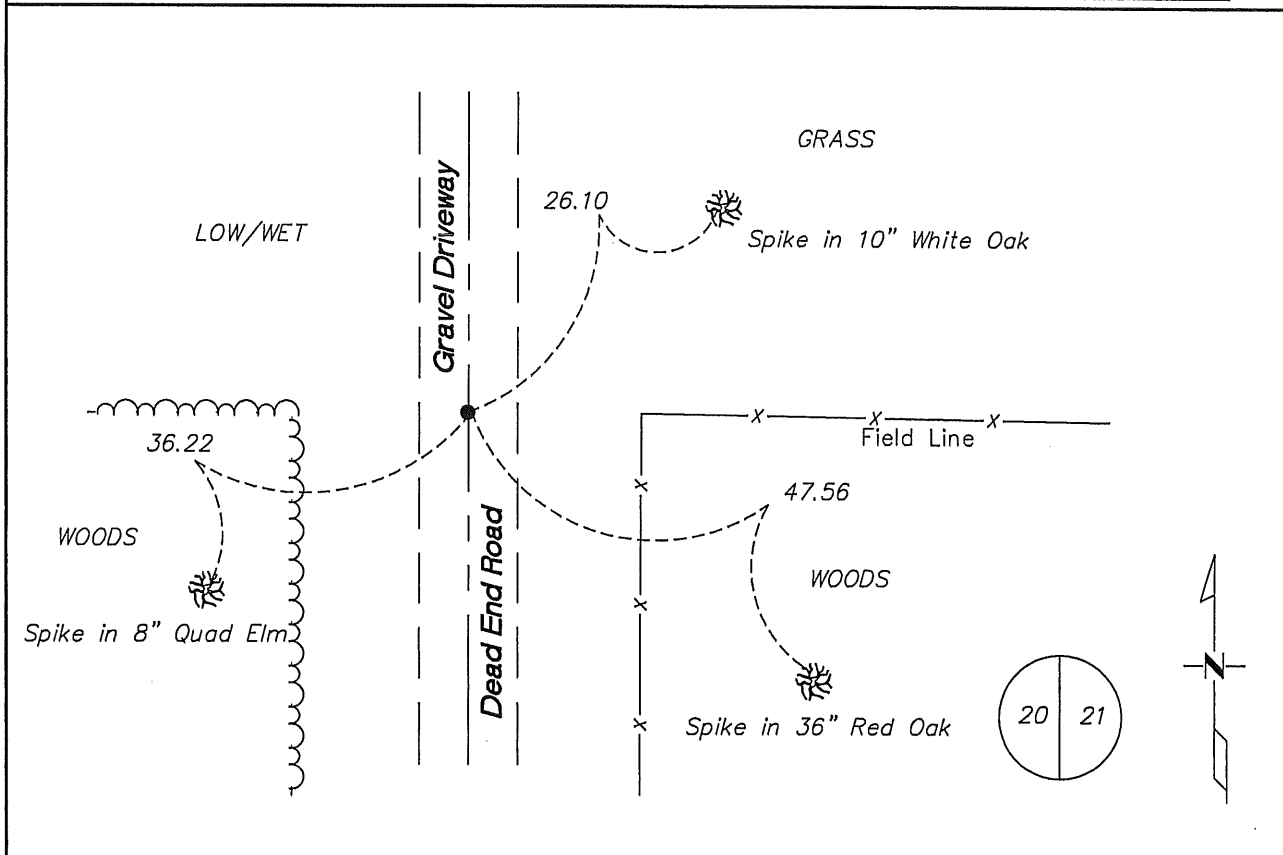
East Quarter Corner of Section 20, Township 38 North, Range 29 West, Fourth Principal Meridian, Benton County, Minnesota.

At this corner location shown on the sketch:

On 12/11/2008 found a 1/2" open iron pipe down 1.0 feet

left monument as found     lowered monument     removed monument (explain)

On \_\_\_\_\_ placed an \_\_\_\_\_



Statement of evidence for this corner location is on back of this page.

I hereby certify that this document was researched and prepared by me or under my direct supervision and that I am a Licensed Land Surveyor under the laws of the State of Minnesota.

Signature Jerome C. Wittstock  
Benton County Surveyor  
License No. 19552

Date: 24 May 2011

Benton County Surveyor's Office  
 Jerome C. Wittstock, Deputy County Surveyor  
 Minnesota License No. 19552

**Statement of Evidence:****B203**

East Quarter Corner of Section 20, Township 38 North, Range 29 West, Alberta Township, 4<sup>th</sup> Principal Meridian, Benton County, Minnesota.

- 1855 Original US General Land Office survey set this corner marked by a wood post and bearing trees were recorded.
- |            |        |          |
|------------|--------|----------|
| 8" Elm     | S 9 E  | 21 links |
| 8" Bur Oak | S 28 W | 57 links |
- 2001 Westwood Professional Services, Inc. searched corner area and found no evidence of the corner. Fence lines were located and approximate corner determined to be 2657 feet south of the NE corner and 2703 feet north of the SE corner. Corner needs further field search.
- 2002 No resurvey information was found on this corner in the Benton County records.
- 2004 Certificate of Survey by David Regan, LS 12236, shows iron pipe set at the corner 2684.74 feet south of the NE corner.
- 2008 Westwood Professional Services Inc., found a 1/2" iron pipe in the north-south centerline of a gravel road and on line with fence to the east. Measured 2684.74 feet to the NE corner and 2675.22 feet to the SE corner of Section 20. Position fits longstanding occupation lines across Section 20 to the W1/4 corner and across Section 21 to the E1/4. 1/2" iron pipe is accepted as marking the obliterated position for this corner.

Coordinates Obtained by GPS  
 NAD 83 (1996 Adjustment)  
 N-177663.748  
 E-521312.618