

Certified, Filed and or Recorded on
Aug. 24, 2009 AT 08:09AM

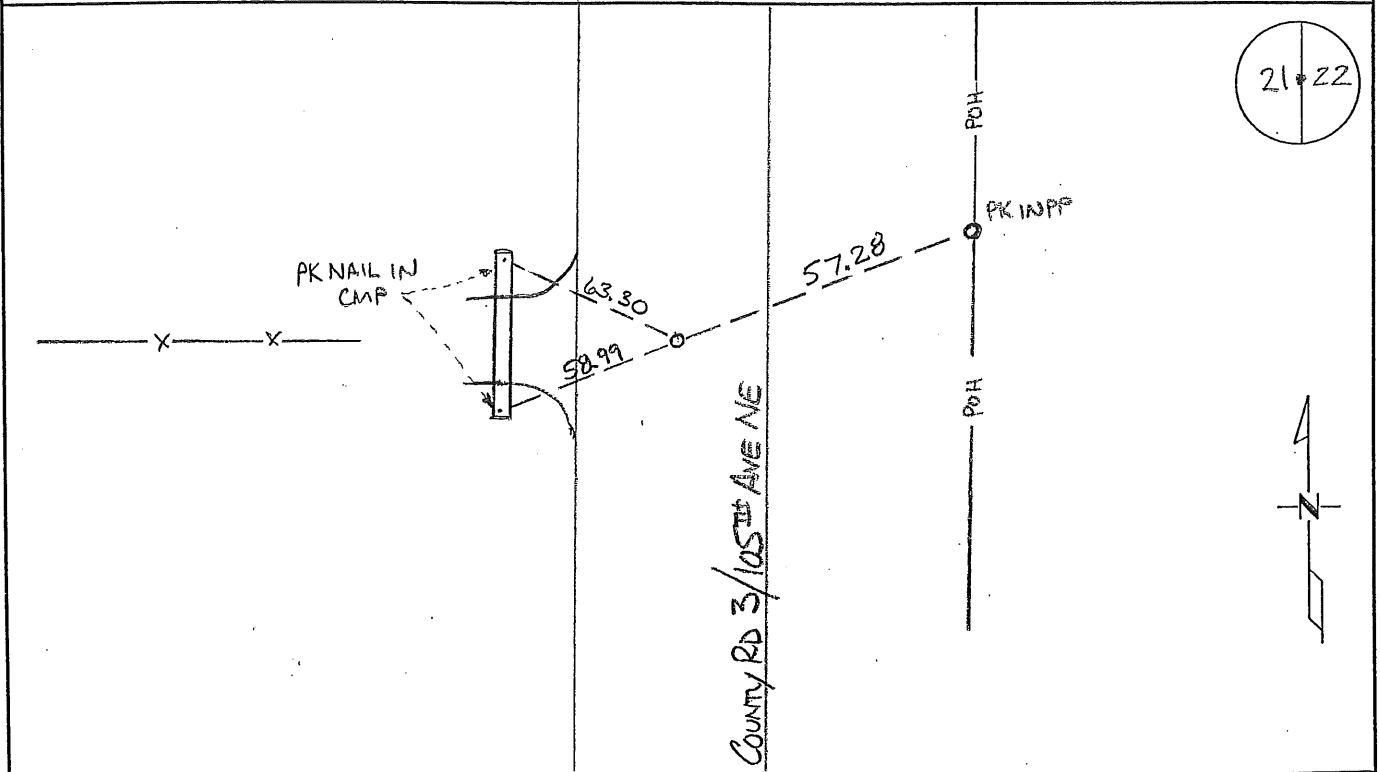
Signed: OK
MARILYN J NOVAK G V I
BENTON COUNTY MINNESOTA
MARILYN J NOVAK
COUNTY RECORDER

CERTIFICATE OF LOCATION OF GOVERNMENT CORNER

EAST QUARTER Corner of Section 21, Township 38, Range 29
4TH Principal Meridian, State of Minnesota, County of Benton

At the corner location shown on the sketch:

- On _____ found a _____
- left monument as found lowered monument removed monument (explain)
- On 07/01/09 placed an 1/2" IRON PIPE RLS #19552



Statement of evidence for this corner location is on back of this page.

I hereby certify that this document was researched and prepared by me or under my direct supervision and that I am a licensed Land Surveyor under the laws of the State of Minnesota.

Signature Jerome C. Wittstock
Benton County Surveyor
License No. 19552

Date: 21 August 2009

Benton County Surveyor's Office
 Jerome C. Wittstock, County Surveyor
 Minnesota License No. 19552

Statement of Evidence:**B213**

East Quarter Corner of Section 21, Township 38 North, Range 29 West, Alberta Township, 4th Principal Meridian, Benton County, Minnesota.

1855 Original US General Land Office survey set a wood post at this location and bearing trees were recorded:

| | | |
|------------|--------|----------|
| 12" Elm | N 38 E | 15 links |
| 7" Blk Ash | S 59 W | 33 links |

1931 County Engineer's Notebook No. 64 contains road survey for SAR No. 3 from CR 12 south to Gilman. Corner is shown marked by a granite rock with "+" with ties:

| | | |
|-----------|------|------|
| F.P. | SE | 37.0 |
| 10" Elm W | 54.0 | |

Stationing gives distances of 2670.7 feet to the NE corner and 2647.1 feet to the SE corner and a delta angle of 0-29' right (running north to south).

1951 County Engineer's Notebook No. 190 contains survey of SAR No. 3 running from the south to north. Corner is shown as a rock with + in road with old road running east and tree line west. Same ties to three Elms as shown below. Stationing gives distances of 2671.5 feet to the NE corner and 2648.9 feet to the SE corner with a delta angle of 0-11' left.

1952 County Surveyor's Record Book 2, page 278, notes the following reference ties to a granite rock with an 'X'.

| | | |
|-------------|------------|---------|
| | 10" Elm W | 53.5 |
| | 20" Elm SE | 119.7 |
| | 16" Elm SE | 131.8 |
| Older ties: | F.P. | SE 37.0 |
| | 10" Elm W | 54.0 |

1981 Paul Wellen, LS 10461, notes show a nail and disc set for the corner in center of north-south road and fence line east-west. Ties:

| | | |
|---------------|----|---------|
| PP | NE | 73.41 |
| 12" Elm Stump | W | 53.39 |
| F.P. | SE | 43.52 |
| Dead 24" Elm | SE | 122 +/- |

1989 William Lunser, LS 9394, found no monument or old ties as shown on 1952 County Highway plans. He set a cast iron monument at the centerline of roads north/south and a fence line west. He filed a Certificate of Location (#195963) and notes a distance of 2668.74 feet to the NE corner Sec 21 and a distance of 2648.94 feet to the NE corner Sec 28.

NOTE: Lunser's tie to PP agrees with Wellen's tie. Two of Wellen's ties appear to fit with old ties to Elms. Position probably is acceptable, but with old reference to stone, corner should be excavated to verify.

2009 Westwood Professional Services found a 3/8-inch solid iron rod and excavated with a Benton County backhoe. A 8-foot by 14-foot by 7-foot deep hole was excavated and no corner evidence was found. Distances to the north and south from the found rod fit the measurements from 1931, 1951 and 1989 within 2 feet and accessories from 1952 and 1981 appear to agree. Believing the rod to be the best available obliterated evidence a 1/2-inch by 15-inch iron pipe capped 19552 was set 0.5 feet below the road surface at the rod position.

County Coordinates Obtained by GPS

NAD 83 (1996 Adjustment)
 N-177705.698
 E-526567.410

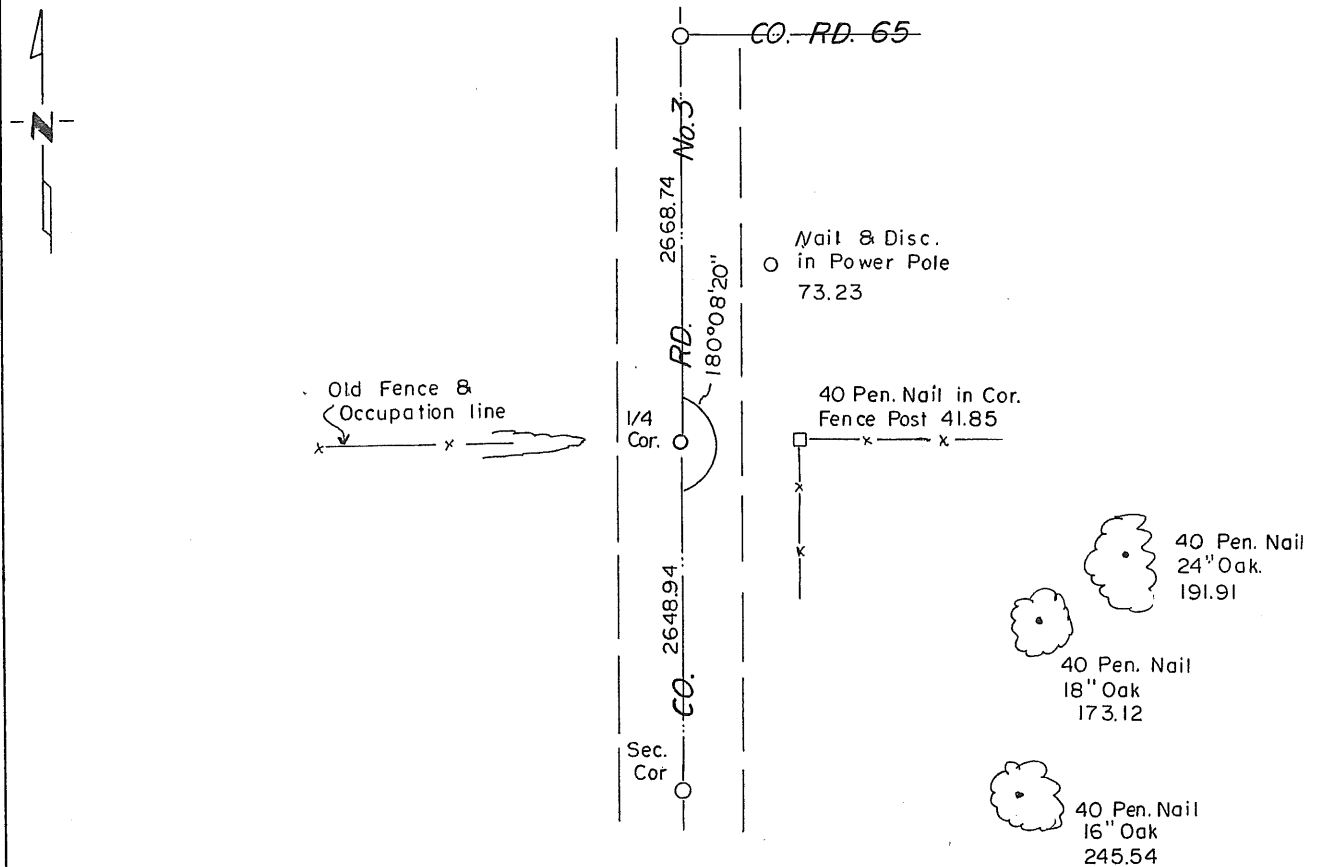
CERTIFICATE OF LOCATION OF GOVERNMENT CORNER

East Quarter Corner of Section 21, Township 38, Range 29, 4th P.M.
STATE OF MINNESOTA, County of Benton

At the corner location shown on the sketch:

- On _____ found a _____
DATE
- left monument as found, lowered monument, removed monument (explain)
- On 12-06-1989 placed a Benton County Cast Iron Mon.
DATE

SKETCH OF REFERENCE TIES



Statement of evidence relative to this corner location is on back of page.

I hereby certify that this document and the data contained herein was prepared by me or under my direct supervision.

[Signature] 1/5/2000
SIGNATURE DATE

Registration No. 9394

- Land Surveyor, Professional Engineer
- County Surveyor, County Engineer

OFFICE OF THE REGISTER OF DEEDS
County of _____

I hereby certify that this document was filed in the Reg. of Deeds office at _____ .M. on the _____ day of _____ A.D., 19 ____

Register of Deeds _____

By _____, Deputy

DOCUMENT NO. _____

Statement of Evidence:

The 1930 county section tie book shows the location of this corner marked by a wooden hub.

The 1952 road plans of Co. Rd. 3 shows the location of this corner on a occupation and tree line to the West and on the centerline of a road North and South.

12-06-1989 After searching the location and finding no monument or old ties, which are present on the 1952 plans, placed a cast iron mon. on the centerline of Co. Rd. 3 and on the occupation line to the West. A newer fence line to the east supports this location also.

1 9 5 9 6 3

OFFICE OF
BENTON COUNTY RECORDER
BENTON COUNTY, MN
CERTIFIED TO BE FILED
AND/OR RECORDED ON

JAN 11 8 36 AM '90

ALICE C. ENGELMEYER
COUNTY RECORDER

BY *Jed* DEPUTY