

405659

Certified, Filed and or Recorded on
September 24, 2014 12:19 PM

BENTON COUNTY MINNESOTA
MARILYN J NOVAK
COUNTY RECORDER

By: BW

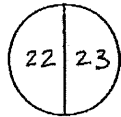
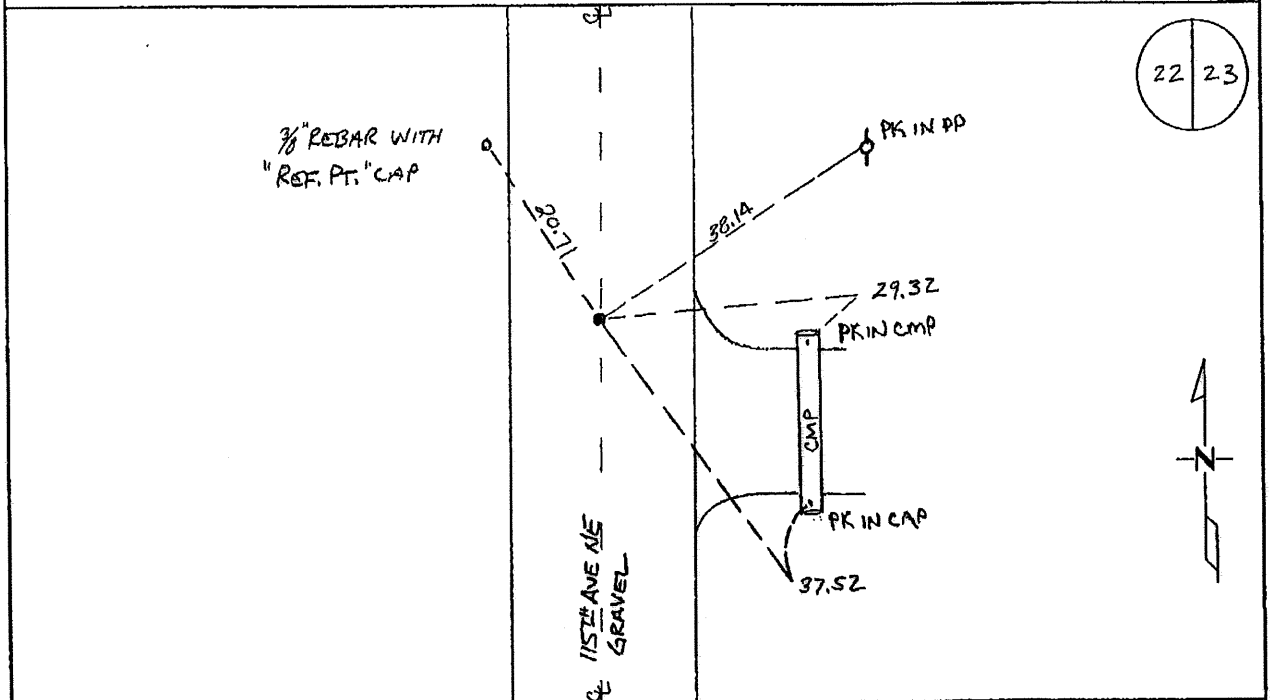
6--V--1

CERTIFICATE OF LOCATION OF GOVERNMENT CORNER

EAST QUARTER Corner of Section 22, Township 38, Range 29
4TH Principal Meridian, State of Minnesota, County of Benton

At the corner location shown on the sketch:

- On 07/29/09 found a 1/2" IRON PIPE WITH BUSTED CAP
- left monument as found
- lowered monument
- removed monument (explain)
- On _____ placed on _____



Statement of evidence for this corner location is on back of this page.

I hereby certify that this document was researched and prepared by me or under my direct supervision and that I am a licensed Land Surveyor under the laws of the State of Minnesota.

Signature James C. Wittstock
Benton County Surveyor
License No. 19552

Date: 9/18/2014

Benton County Surveyor's Office
Jerome C Wittstock, Deputy County Surveyor
Minnesota License No. 19552

Statement of Evidence:

B223

East Quarter Corner of Section 22, Township 38 North, Range 29 West, Alberta Township, 4th Principal Meridian, Benton County, Minnesota.

1855 Original US General Land Office survey set a wood post at this location and bearing trees were recorded.

7" Blk Ash	S 74 E	33 links
12" Sugar	N 25 W	27 links

1907 County Road Book, pages 4-6, contains a road survey by Felix Parent, County Surveyor, for State Road. Survey shows corner and road run north-south. Stationing gives distance of 2627 feet to the SE corner and 2611 feet to the NE corner of Section 22.

1912 County Surveyor's Record Book 2, page 231, notes the following reference tie to a post in the road:

Cor Post	W	27
----------	---	----

2008 Westwood Professional Services, Inc. found a 1/2" iron pipe with damaged plastic cap (unreadable) in the centerline of CR 65 and on field line to the east. We measured 2609.93 feet to the NE corner which is consistent with 1907 Parent distance and 2606.31 feet to the SE corner. Position fits longstanding occupation and is accepted as marking the obliterated location for this corner.

Coordinates Obtained by GPS
NAD 83 (1996 Adjustment)
N- 177810.246
E- 531757.572

2014 The Benton County Surveyor's Office excavated a 10' by 12' hole to original ground at on a fence projected from the east, which fit the proportional location based on the 1907 survey. Pieces of wire were found approximately 12 feet north of the iron pipe, but no additional corner evidence was found. The 1/2" iron pipe is accepted as marking the corner position.