

CERTIFICATE OF LOCATION OF GOVERNMENT CORNER

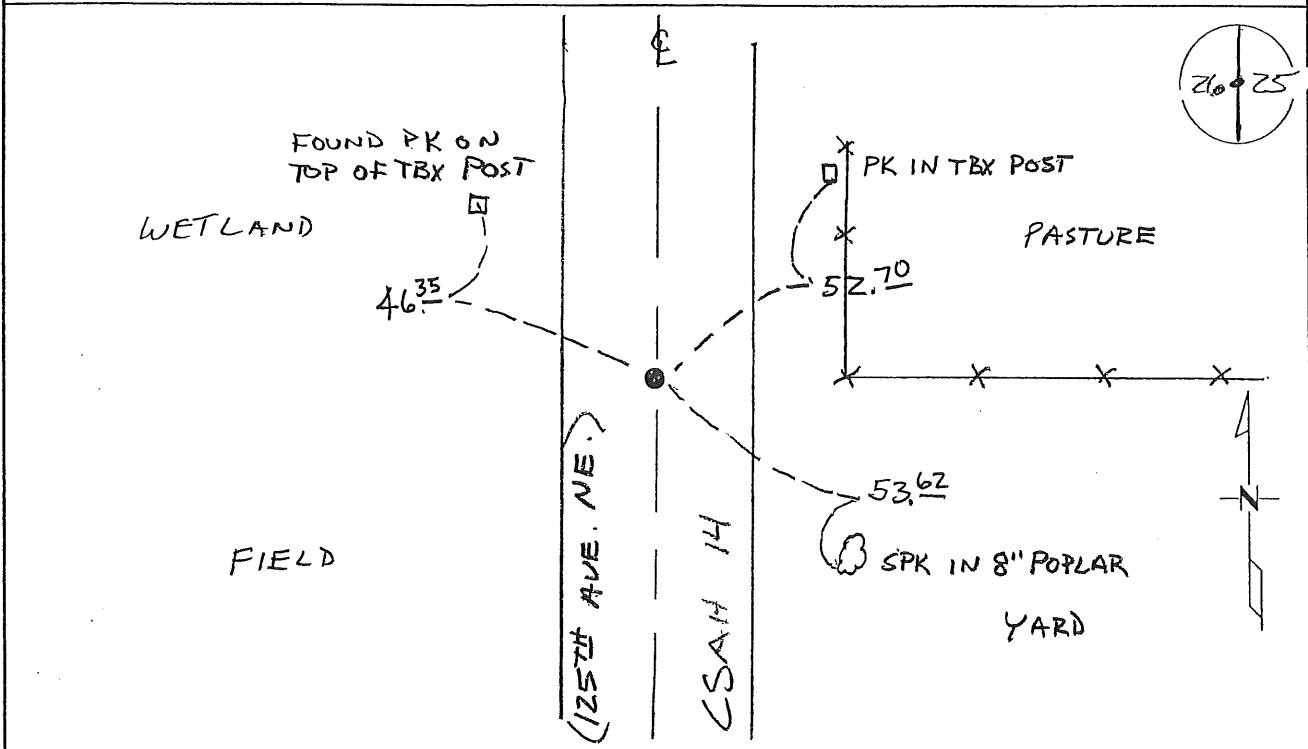
EAST QUARTER Corner of Section 26, Township 38, Range 29
4TH Principal Meridian, State of Minnesota, County of Benton

At the corner location shown on the sketch:

On 11-13-08 found a CAST IRON MONUMENT

left monument as found lowered monument removed monument (explain)

On _____ placed an _____



Statement of evidence for this corner location is on back of this page.

I hereby certify that this document was researched and prepared by me or under my direct supervision and that I am a licensed Land Surveyor under the laws of the State of Minnesota.

Signature Chris Hyslop
Deputy County Surveyor
License No. 43932

Date: 12/17/08

Statement of Evidence:

B263

East Quarter Corner of Section 26, Township 38 North, Range 29 West, Alberta Township, 4th Principal Meridian, Benton County, Minnesota.

1855 Original US General Land Office survey set a wood post at this location and bearing trees were recorded.

8" W Birch	S 6 E	163 links
10" Tamarack	S 3 1/2 W	200 links

1944 County Engineer's Notebook No. 157 contains road survey for CAR No. 43 running north to south along the section line. Corner is shown as a hub set in center of road with fence east. Ties:

Cor FP E 24.0'

Stationing gives distances of 2710.4 feet to the NE corner and 2688.3 feet to the SE corner with a delta angle of 0-35' left.

1963 County Surveyor's Record Book 2, page 288, notes Highway Department reference ties to an iron:

2" X 2" Hub	East	15.0
2" X 2" Hub	SE	19.85

It also notes a distance of 2690.0 feet to the SE corner Sec 26 and a distance of 2711.0 feet to the NE corner Sec 26. (Note in Notebook 157 shows corner found from 1944 survey and placed iron.)

1993 Sidney Williamson, LS 10918, found a 1/2" iron pipe at the centerline of roads north/south and a fence line east. He replaced it with a cast iron monument and filed a Certificate of Location (#223486) and notes a distance of 2690.57 feet to the SE corner Sec 26 and a distance of 2711.03 feet to the NE corner Sec 26.

2004 Certificate of Survey by Larry Huhn, LS 24332, in the NW 1/4 of the SW 1/4 of Section 26 shows a PK nail at the corner.

2008 Westwood Professional Services, Inc. found a CIM in the centerline of CSAH 14 and in line with fence line east. Measured 2710.99 feet to the NE corner and 2690.53 feet to the SE corner of Section 26 which agrees with 1944, 1963 and 1993 distances. CIM is accepted as marking the obliterated position for this corner.

County Coordinates Obtained by GPS
NAD 83 (1996 Adjustment)
N-172383.401
E-537044.963

12-26

A 362626

Certified, Filed and or Recorded on
Dec. 26, 2008 AT 10:40AM

Signed: CK
MARILYN J NOVAK 6 V I
BENTON COUNTY MINNESOTA
MARILYN J NOVAK
COUNTY RECORDER

DOCUMENT COVER SHEET

Document Name: **GOVERNMENT CORNER**

BENTON COUNTY OF

THE PUBLIC

Document Date: **12/17/2008**

This cover sheet is being attached to this document to provide room for recording information and is considered part of this document

CERTIFICATE OF LOCATION OF GOVERNMENT CORNER

EASTQUARTER Corner of Section 26, Township 38, Range 29, _____ P.M.

STATE OF MINNESOTA, County of BENTON

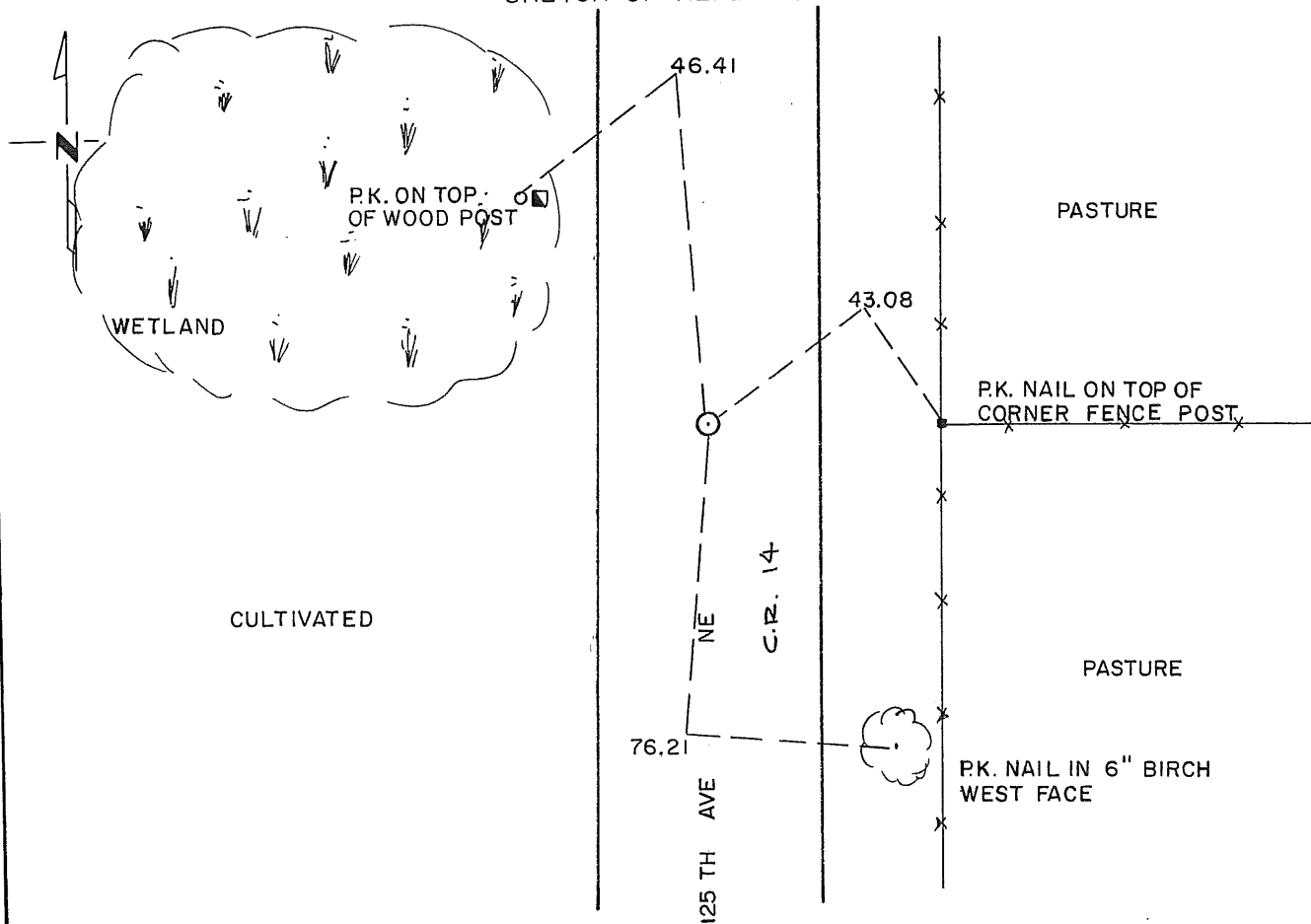
At the corner location shown on the sketch:

On 4-27-93 found a 1/2" OPEN IRON
DATE

left monument as found, lowered monument, removed monument (explain)

On 6-17-93 placed a STANDARD CAST IRON MONUMENT
DATE

SKETCH OF REFERENCE TIES



Statement of evidence relative to this corner location is on back of page.

I hereby certify that this document and the data contained herein was prepared by me or under my direct supervision.

Sidney P. Williamson 5/24/94
SIGNATURE DATE

Registration No. 10918

Land Surveyor, Professional Engineer

County Surveyor, County Engineer

OFFICE OF THE COUNTY RECORDER

County of _____

I hereby certify that this document was filed in the Co. Recorders office at _____ .M. on the _____ day of _____ A.D., 19 _____

County Recorder _____

By _____, Deputy

DOCUMENT NO. _____

Statement of Evidence:

1. In 1855, the Original Government Survey was performed.
2. Benton County Survey Record indicate an iron in 1963.
3. In 1963, the Benton County Highway Department measured 2690.0 feet to the southeast corner of Section 26 and 2711.0 feet to the northeast corner of Section 26.
4. On April 27, 1993, Williamson-Kotsmith, Inc. found ½ inch open iron on a fence line to the east and on the centerline of County Road 14. It measures 2690.57 feet to the southeast corner of Section 26 and 2711.03 feet to the northeast corner of Section 26.
5. On June 17, 1993, Williamson-Kotsmith, Inc. removed iron and set a Standard Cast Iron Monument at the same location.

223486

OFFICE OF
BENTON COUNTY RECORDER
BENTON COUNTY, MN
CERTIFIED TO BE FILED
AND/OR RECORDED ON

JUN 17 1 10 PM '94

ALICE G. HANSEN
COUNTY RECORDER

BY  DEPUTY