

409205

Certified, Filed and or Recorded on
April 29, 2015 2:20 PM

BENTON COUNTY MINNESOTA
MARILYN J NOVAK
COUNTY RECORDER

By: CK

G -- V -- I

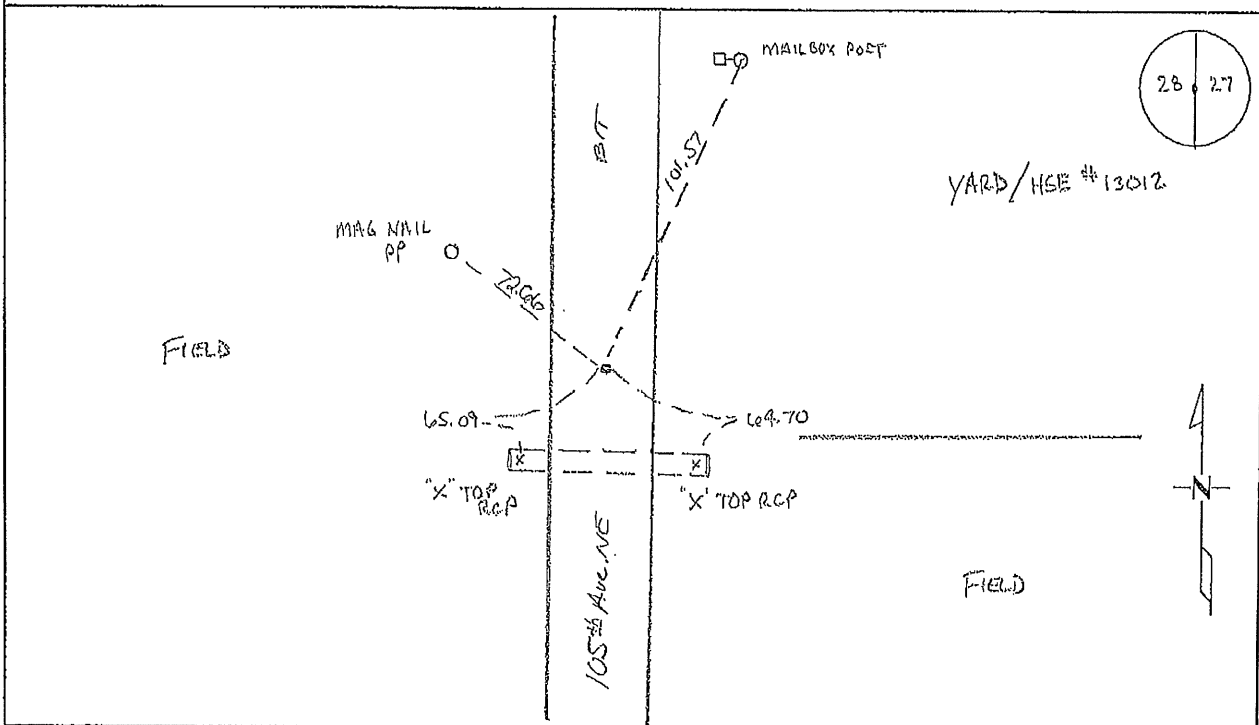
CERTIFICATE OF LOCATION OF GOVERNMENT CORNER

EAST QUARTER Corner of Section 28, Township 38, Range 29
4TH Principal Meridian, State of Minnesota, County of Benton

At the corner location shown on the sketch:

On 03/24/2015 found a 1/2" REBAR ON CENTERLINE N/S COUNTY ROAD

- left monument as found
- lowered monument
- removed monument (explain)
- On _____ placed on _____



Statement of evidence for this corner location is on back of this page.

I hereby certify that this survey, plan, or report was prepared by me or under my direct supervision and that I am a duly Licensed Land Surveyor under the laws of the state of Minnesota.

Signature Jerome C. Wittstock
Jerome C. Wittstock, PS, CFedS, Benton County Surveyor
License No. 19552

Date: 4/29/2015

Benton County Surveyor's Office
 Jerome C. Wittstock, County Surveyor
 Minnesota License No. 19552

Statement of Evidence:

B283

East Quarter Corner of Section 28, Township 38 North, Range 29 West, Alberta Township, 4th Principal Meridian, Benton County, Minnesota.

- 1855 Original US General Land Office survey set a wood post at this location and bearing trees were recorded.
- | | | |
|-------------|----------|----------|
| 13" Sugar | N 81 ½ W | 20 links |
| 6" Ironwood | N 64 E | 36 links |
- 1931 County Engineer's notebook No. 64 shows an iron and hub at the corner with ties:
- | | | |
|------|----|------|
| T.P. | W | 25.7 |
| T.P. | NE | 28.8 |
- Stationing shows corner 2628.6 feet south of the NE corner.
- 1951 County Engineer's Notebook No. 190 contains survey of SAR No. 3 running from the south to north. Corner is shown as an iron in road with old road running east.
- Ties:
- | | | |
|--------------------|----|------|
| 4 th FP | SE | 55.1 |
| 2 nd FP | SE | 62.3 |
- Stationing gives distances of 2628.5 feet to the NE corner and 2675.4 feet to the SE corner with a delta angle of 0-05' right. Same ties as listed below to two Box Elders.
- 1952 County Surveyor's Record Book 2, page 292, notes the ties to an iron:
- | | | |
|--------------|----|-------|
| 10" Boxelder | NE | 90.1 |
| 12" Boxelder | NE | 101.1 |
- Older Ties to Hub & Iron:
- | | | |
|------|----|------|
| T.P. | W | 25.7 |
| T.P. | NE | 28.8 |
- 2003 Westwood Professional Services, Inc. found a 3/8 " iron pin in the center of road north-south. Measured 2631.33 feet to the NE corner.
 County Coordinates Obtained by GPS to 3/8" Pin
 NAD 83 (1996 Adjustment)
 N- 172425.995
 E- 526640.808
- 2015 The Benton County Surveyor's found the iron pin measuring 2631.33 for the half mile north and 2674.23 for the half mile south, fitting the 1931 and 1951 distances reasonably well. The 1952 ties were not found. The found iron pin is accepted as marking the corner position.