

Certified, Filed and or Recorded on August 19, 2014 1:18 PM

BENTON COUNTY MINNESOTA
MARILYN J NOVAK
COUNTY RECORDER

By: BW

G-V-I

CERTIFICATE OF LOCATION OF GOVERNMENT CORNER

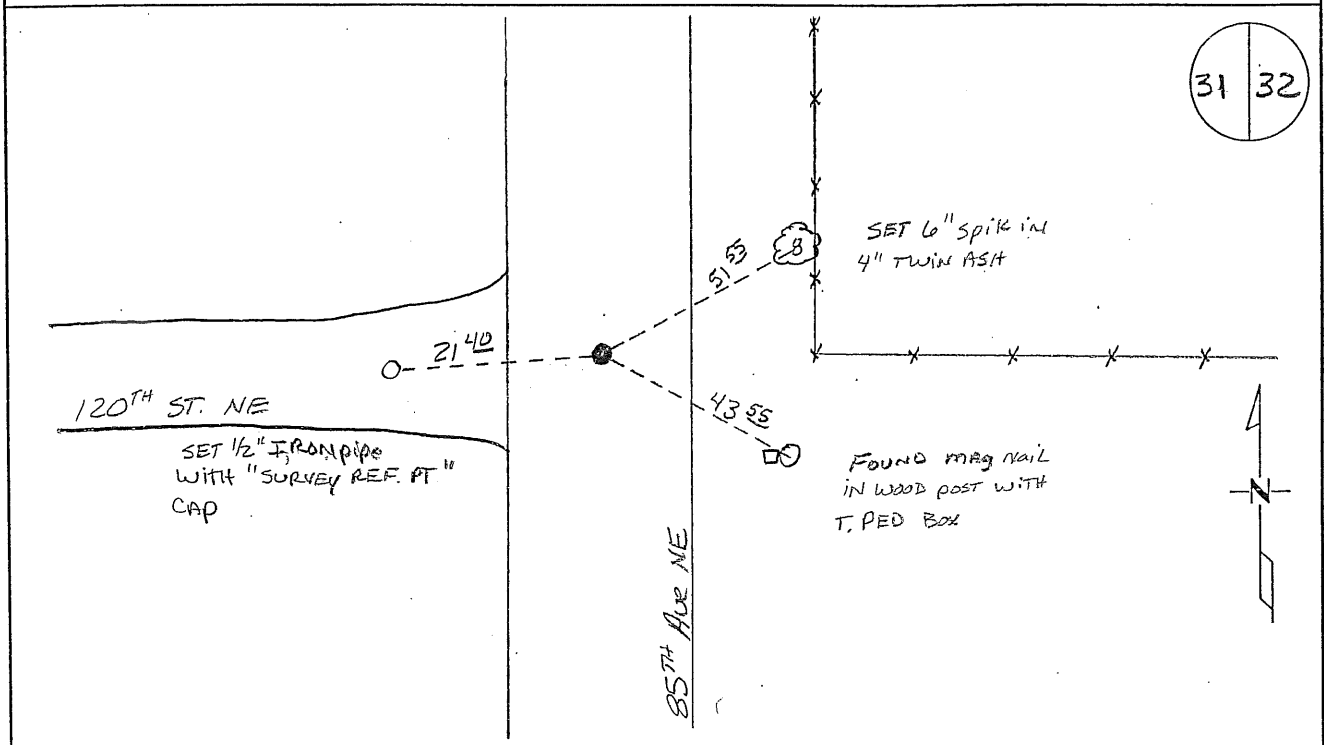
EAST QUARTER Corner of Section 31, Township 38N, Range 29W
4TH Principal Meridian, State of Minnesota, County of Benton

At the corner location shown on the sketch:

On 06/01/2011 found a 1/2" open 0^S' below road surface

left monument as found lowered monument removed monument (explain)

On _____ placed an _____



Statement of evidence for this corner location is on back of this page.

I hereby certify that this document was researched and prepared by me or under my direct supervision and that I am a licensed Land Surveyor under the laws of the State of Minnesota.

Signature Jerome C. Wittstock
Benton County Surveyor
License No. 19552

Date: 8-19-2014

Benton County Surveyor's Office
 Jerome C. Wittstock, County Surveyor
 Minnesota License No. 19552

Statement of Evidence:**B313**

East Quarter Corner of Section 31, Township 38 North, Range 29 West, Alberta Township, 4th Principal Meridian, Benton County, Minnesota.

1855 Original US General Land Office survey set a wood post at this location and bearing trees were recorded.

15" Sugar	S 16 ½ W	33 links
10" Elm	N 58 E	24 links

2003 No resurvey information was found on this corner in the Benton County records. Westwood Professional Services, Inc. found a ½ " iron pipe in the intersection of town roads north-south and west with fence line east. Measured 2644.34 feet to the Northeast corner and 2647.73 feet to the Southeast corner of Section 31. Pipe was found to be 15 feet east of a straight line between section corners. Accepted pipe as marking the obliterated position of the corner.
 County Coordinates Obtained by GPS to ½ " iron pipe
 NAD 83 (1996 Adjustment)
 N- 166955.840
 E- 516320.341

2011 The Benton County Surveyor's Office found a 1/2" open iron pipe down 0.5 feet below the road surface. The 2003 coordinates were verified and reference ties established.