

Certified, Filed and or Recorded on August 19, 2014 1:18 PM

BENTON COUNTY MINNESOTA
MARILYN J NOVAK
COUNTY RECORDER

By: BW

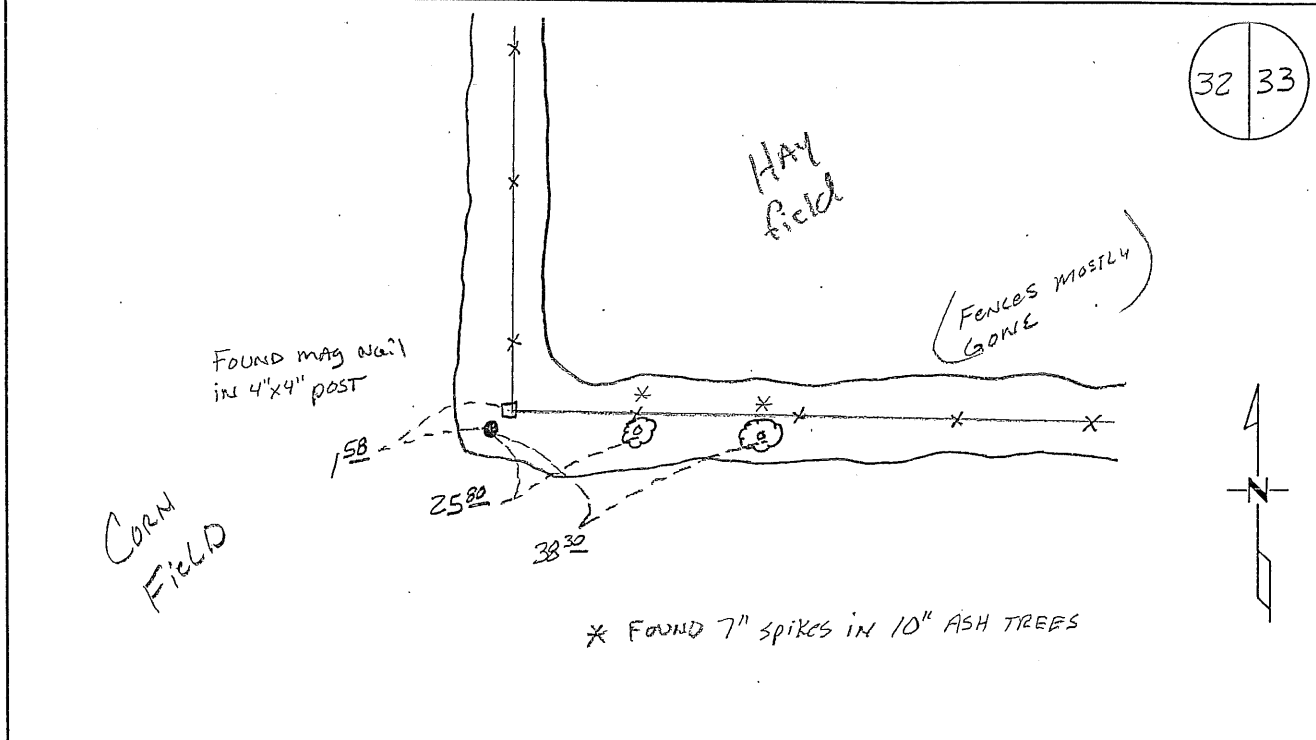
6 - V - I

CERTIFICATE OF LOCATION OF GOVERNMENT CORNER

EAST QUARTER Corner of Section 32, Township 38, Range 29
4TH Principal Meridian, State of Minnesota, County of Benton

At the corner location shown on the sketch:

- On 06/17/2011 found a CAST IRON MONUMENT
- left monument as found lowered monument removed monument (explain)
- On _____ placed on _____



Statement of evidence for this corner location is on back of this page.

I hereby certify that this document was researched and prepared by me or under my direct supervision and that I am a licensed Land Surveyor under the laws of the State of Minnesota.

Signature Jerome C. Wittstock
Benton County Surveyor
License No. 19552

Date: 8-19-2014

Benton County Surveyor's Office
 Jerome C. Wittstock, County Surveyor
 Minnesota License No. 19552

B323

Statement of Evidence:

East Quarter Corner of Section 32, Township 38 North, Range 29 West, Alberta
 Township, 4th Principal Meridian, Benton County, Minnesota.

- 1855 Original US General Land Office survey set a wood post at this location and bearing trees were recorded.
- | | | |
|-------------|--------|----------|
| 24" Elm | N 74 W | 38 links |
| 10" W Birch | N 70 E | 7 links |
- 1902 County Surveyor's Record Map No. 36 shows a survey of Section 33 by John Whilt. The survey notes a post at the corner and a distance of 40.95 chains (2702.7 feet) to the NE corner Sec 32 and a distance of 40.50 chains (2673.0 feet) to the SE corner Sec 32.
- 1983 David Regan, LS 12236 set a ½" I.P. at the corner of fences north/south/west/east. He filed a Certificate of Location (#167998).
- 2003 Westwood Professional Services, Inc. searched for iron set by Regan and found the iron badly bent over. The ties shown on the Certificate have been destroyed. Area has been bulldozed with corner fence post disturbed. Received survey information from Regan in Section 33 and computed position for corner based on this information. From this position, measured 2702.06 feet to the NE corner and 2676.62 feet to the approximate SE corner of Section 32. Distances checked well with 1902 survey and therefore set a cast iron monument at Regan's 1983 position.
 County Coordinates Obtained by GPS
 NAD 83 (1996 Adjustment)
 N- 166962.710
 E- 521580.000
- 2011 The Benton County Surveyor's Office found a cast iron monument set in 2003, verified the 2003 coordinates and set reference ties.

CERTIFICATE OF LOCATION OF GOVERNMENT CORNER

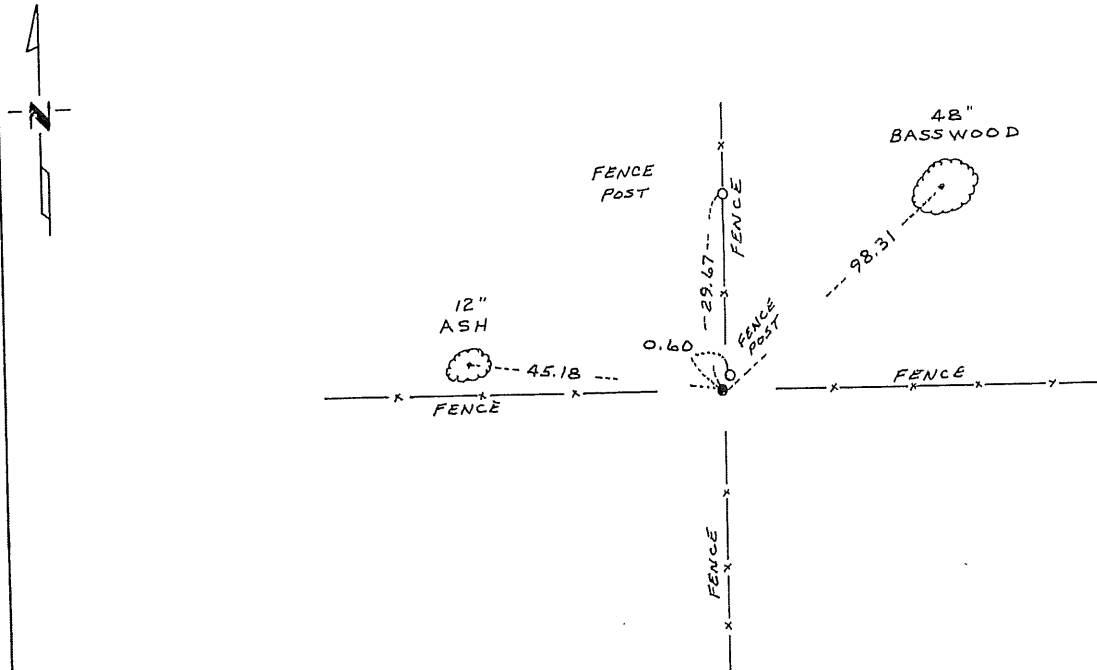
East Quarter _____ Corner of Section 32, Township 38, Range 29, 4th P.M.

STATE OF MINNESOTA, County of Benton

At the corner location shown on the sketch:

- On _____ found a _____
DATE
- left monument as found, lowered monument, removed monument (explain)
- On 7/1/83 placed a $\frac{1}{2}$ inch iron pipe at fence corner of fences
DATE north-south, east-west

SKETCH OF REFERENCE TIES



Statement of evidence relative to this corner location is on back of page.

I hereby certify that this document and the data contained herein was prepared by me or under my direct supervision.

David O. Beyan SIGNATURE 1/3/84 DATE

Registration No. 12236
 Land Surveyor, Professional Engineer
 County Surveyor, County Engineer

County Recorder
OFFICE OF THE REGISTER OF DEEDS
County of Benton

I hereby certify that this document was filed in the Reg. of Deeds office at 4 P.M. on the 11th day of January A.D., 1984

Register of Deeds F. Johnson

By _____, Deputy
DOCUMENT NO. 167998