

409208

Certified, Filed and or Recorded on
April 29, 2015 2:20 PM

BENTON COUNTY MINNESOTA
MARILYN J NOVAK
COUNTY RECORDER

By: OK

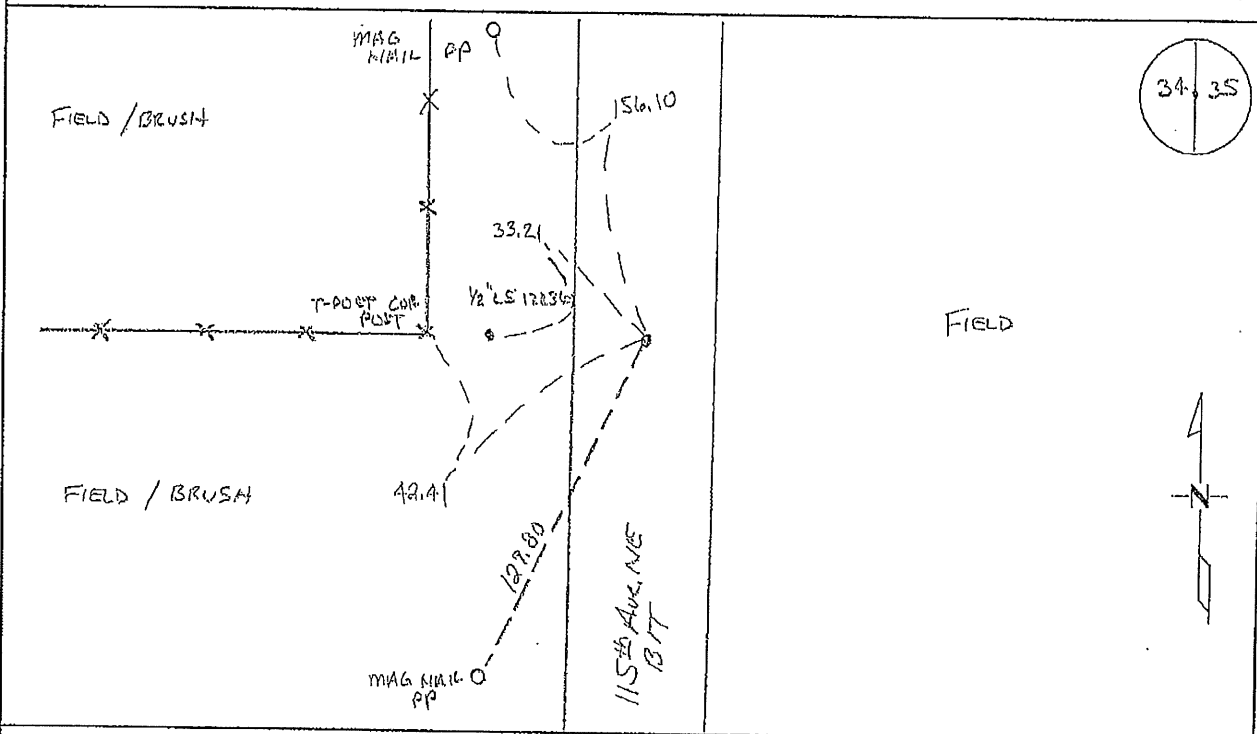
6 -- V -- 1

CERTIFICATE OF LOCATION OF GOVERNMENT CORNER

EAST QUARTER Corner of Section 34, Township 38, Range 29
4TH Principal Meridian, State of Minnesota, County of Benton

At the corner location shown on the sketch:

- On 03/24/2015 found a CAST IRON MONUMENT
- left monument as found lowered monument removed monument (explain)
- On _____ placed on _____



Statement of evidence for this corner location is on back of this page.

I hereby certify that this survey, plan, or report was prepared by me or under my direct supervision and that I am a duly Licensed Land Surveyor under the laws of the state of Minnesota.

Signature Jerome C. Wittstock
Jerome C. Wittstock, PS, CFedS, Benton County Surveyor
License No. 19552

Date: 4/29/2015

Benton County Surveyor's Office
 Jerome C. Wittstock, County Surveyor
 Minnesota License No. 19552

Statement of Evidence:

B343

East Quarter Corner of Section 34, Township 38 North, Range 29 West, Alberta Township, 4th Principal Meridian, Benton County, Minnesota.

- 1855 Original US General Land Office survey set a wood post at this location and bearing trees were recorded.
- | | | |
|------------|--------|----------|
| 7" Linden | S 57 W | 7 links |
| 14" Linden | N 42 E | 11 links |
- 1895 County Surveyor's Record Book 2, page 236, shows a survey by Felix Parent of Section 34. He notes setting the corner lost measuring 83.71 chains (5524.86 feet) between section corners establishing the quarter corner at a distance of 41.855 chains and notes the following reference tie:
- | | | |
|-----------|--------|----------|
| 12" W Oak | N 74 W | 90 links |
|-----------|--------|----------|
- 1907 County Road Book, pages 4-6, contains a road survey by Felix Parent, County Surveyor, for State Road. Survey gives distance of 5539 feet for the east section line.
- 1912 County Engineer's notebook 2, page 37 contains a road survey by Cleveland for road running north and south. Survey notes a stake in the road and the following reference ties:
- | | | |
|--------------|-----------|----------------------|
| Oak stump | N 74 W | 90 (Parent's old BT) |
| NW Cor House | S 84-30 E | 113 feet |
- Stationing gives a distance of 2775 feet to the SE corner and 2768 feet to the NE corner of Section 34.
- 1960 The Benton County Highway Department measured 5543.6 feet between the NE and SE corners of Section 34.
- 1993 Sidney Williamson set a cast iron monument in the centerline of road north/south. He measured 5546.05 feet between the NE and SE Corners of Section 34 and set the corner lost. He filed a Certificate of Location (#223488).
- 2003 Westwood Professional Services, Inc. found CIM. Measured 2772.93 feet to the SE corner and 2773.02 feet to the NE corner of Section 34.
 County Coordinates Obtained by GPS to CIM
 NAD 83 (1996 Adjustment)
 N- 167077.132
 E- 532108.414
- 2015 The Benton County Surveyor's Office found the CIM set in 1993 and verified the 2003 coordinates. The method used to set the CIM has been used since 1895 and falls in the north-south centerline of 115th Avenue NE and on a fence to the west. The CIM is accepted as marking the corner position.

CERTIFICATE OF LOCATION OF GOVERNMENT CORNER

EASTQUARTER Corner of Section 34, Township 38, Range 29, _____ P.M.

STATE OF MINNESOTA, County of BENTON

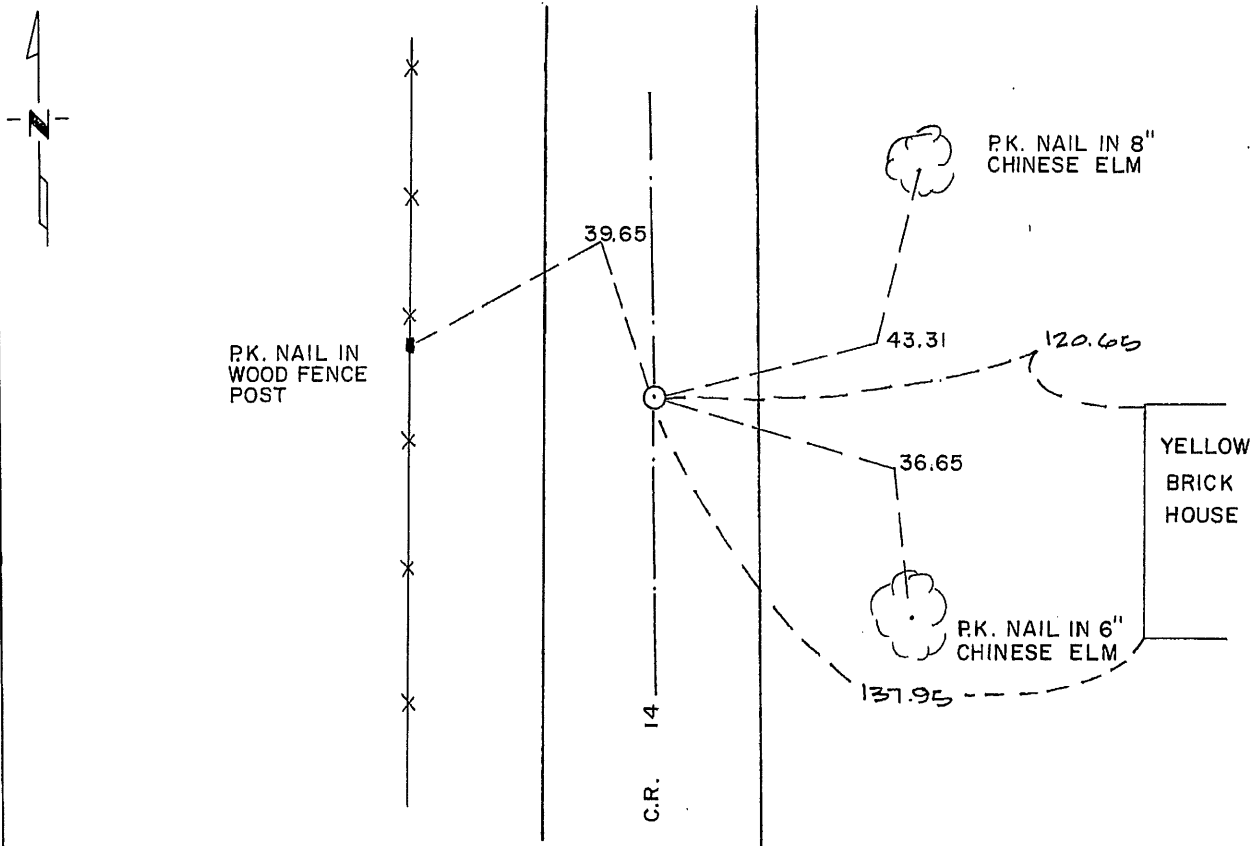
At the corner location shown on the sketch:

On 4-27-93 found a _____
DATE

left monument as found, lowered monument, removed monument (explain)

On 10/8/93 placed a STANDARD CAST IRON MONUMENT
DATE

SKETCH OF REFERENCE TIES



Statement of evidence relative to this corner location is on back of page.

I hereby certify that this document and the data contained herein was prepared by me or under my direct supervision.

Sidney F. Williamson 5/24/94
SIGNATURE DATE

Registration No. 10918

Land Surveyor, Professional Engineer

County Surveyor, County Engineer

OFFICE OF THE COUNTY RECORDER

County of _____

I hereby certify that this document was filed in the Co. Recorders office at _____ .M. on the _____ day of _____ A.D., 19 _____

County Recorder _____

By _____, Deputy

DOCUMENT NO. _____

Statement of Evidence:

1. The original government survey was performed in 1855.
2. On April 22nd 1895 Felix Parent, Benton County surveyor measured 83.71 chains (5524.86) on the line between Sections 34 and 35 and established the quarter section corner at 41 chains 85½ links (2762.43 feet).
3. In 1960 the Benton County Highway Department measured 5543.6 feet on the line between Sections 34 and 35.
4. In 1993, Williamson-Kotsmith, Inc. measured 5546.05 feet on the line between Section 34 and 35. In October 1993, Williamson-Kotsmith, Inc. set a Standard Benton County Monument on single proportionate measurement.

223488

OFFICE OF
BENTON COUNTY RECORDER
BENTON COUNTY, MN
CERTIFIED TO BE FILED
AND/OR RECORDED ON

JUN 17 1 10 PM '94

ALICE S. SCHNEIDER
COUNTY RECORDER

BY JW DEPUTY