

Certified, Filed and or Recorded on August 19, 2014 1:18 PM

BENTON COUNTY MINNESOTA
MARILYN J NOVAK
COUNTY RECORDER

By: BW

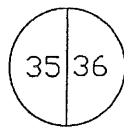
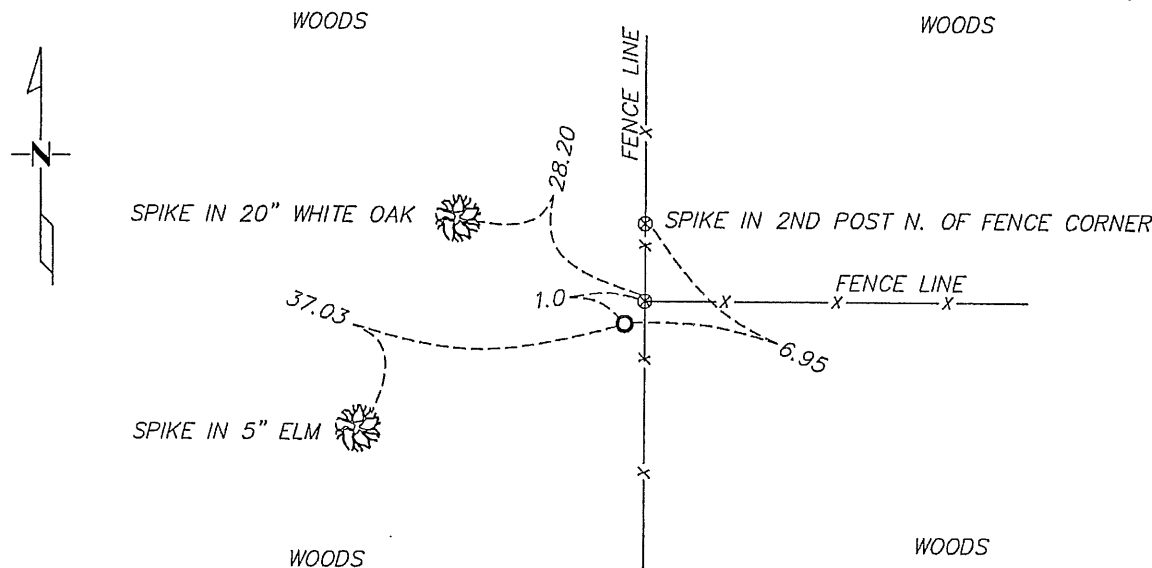
6--V--I

CERTIFICATE OF LOCATION OF GOVERNMENT CORNER

East Quarter _____ Corner of Section 35 , Township 38 , Range 29
4TH Principal Meridian, State of Minnesota, County of Benton

At the corner location shown on the sketch:

- On _____ found a _____
DATE
- left monument as found lowered monument removed monument (explain)
- On 06/29/06 placed an 1/2" x 14" Pipe, capped 19552
DATE



Statement of evidence for this corner location is on back of this page.

I hereby certify that this document was researched and prepared by me or under my direct supervision and that I am a licensed Land Surveyor under the laws of the State of Minnesota.

Signature Jerome C. Wittstock Date 8-19-2014 License No. 19552

Title: Land Surveyor Professional Engineer County Surveyor County Engineer

Benton County Surveyor's Office
 Jerome C. Wittstock, County Surveyor
 Minnesota License No. 19552

Statement of Evidence:**B353**

East Quarter Corner of Section 35, Township 38 North, Range 29 West, Alberta Township, 4th Principal Meridian, Benton County, Minnesota.

1855 Original US General Land Office survey set a wood post at this location and bearing trees were recorded.

10" Linden	S 64 W	26 links
12" Maple	S 38 E	20 links

Line tree noted: 12" Linden North 264 links.

2002 No resurvey information has been found on this corner in the Benton County records.

2006 Westwood Professional Services searched corner position area. A north-south fence line was found with a fence to the east. The fence corner measures 2680.79 to the northeast corner and 2647.80 feet to the southeast corner of Section 35. These distances fit proportionally with an additional 2-pole tally in the north half of the section. A 1/2-inch x 15-inch iron pipe capped 19552 was set on the southwest side of the corner fence post.

Coordinates Obtained by GPS
 NAD 83 (1996 Adjustment)
 N- 167012.893
 E- 537136.590