

409192

Certified, Filed and or Recorded on  
April 29, 2015 2:20 PM

BENTON COUNTY MINNESOTA  
MARILYN J NOVAK  
COUNTY RECORDER

By: OK

G - V - I

# CERTIFICATE OF LOCATION OF GOVERNMENT CORNER

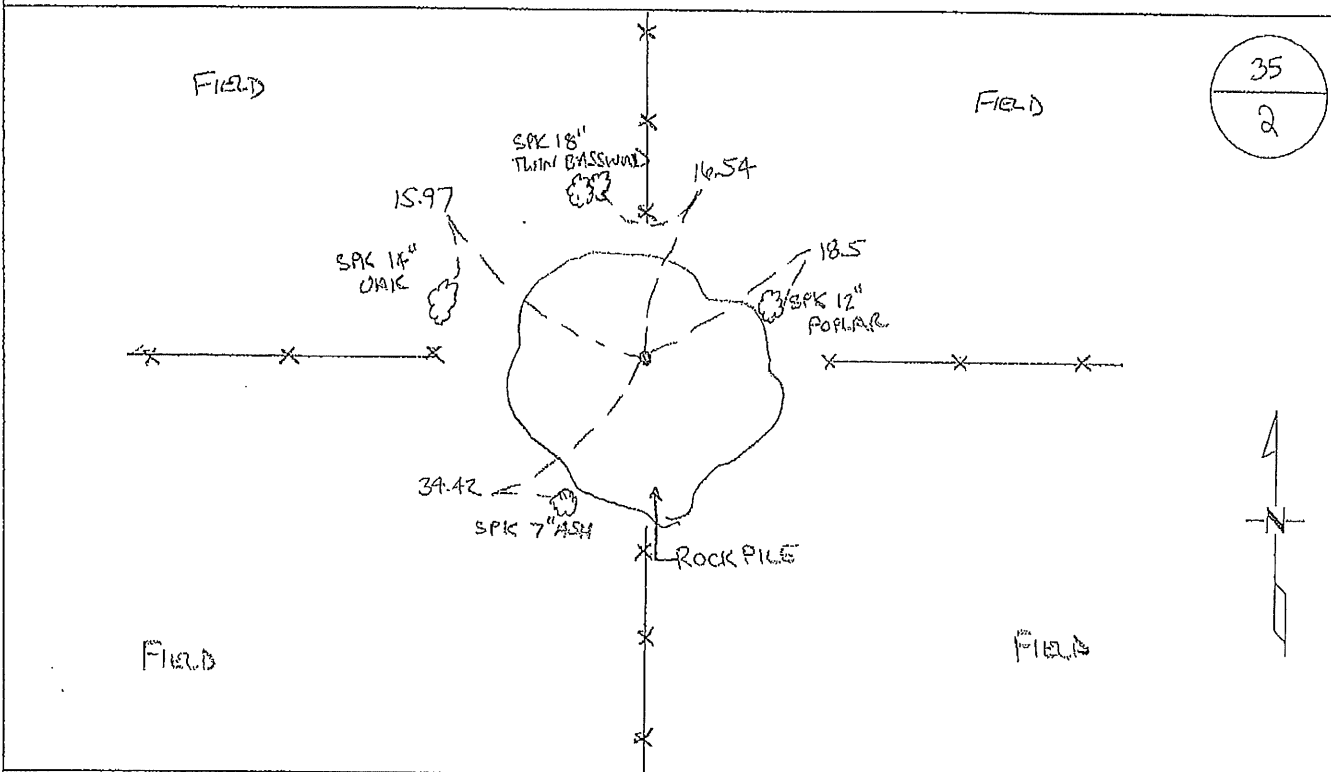
NORTH QUARTER Corner of Section 2, Township 38, Range 29  
4TH Principal Meridian, State of Minnesota, County of Benton

At the corner location shown on the sketch:

On 03/27/2015 found a 1/2" IRON PIPE CAPPED LS 22702

left monument as found       lowered monument       removed monument (explain)

On \_\_\_\_\_ placed on \_\_\_\_\_



35  
2

Statement of evidence for this corner location is on back of this page.

I hereby certify that this survey, plan, or report was prepared by me or under my direct supervision and that I am a duly Licensed Land Surveyor under the laws of the state of Minnesota.

Signature Jerome C. Wittstock  
Jerome C. Wittstock, PS, CFedS, Benton County Surveyor  
License No. 19552

Date: 4/29/2015

Benton County Surveyor's Office  
 Jerome C. Wittstock, County Surveyor  
 Minnesota License No. 19552

**Statement of Evidence:**

B021

North Quarter Corner of Section 2, Township 38 North, Range 29 West, Alberta Township, 4<sup>th</sup> Principal Meridian, Benton County, Minnesota.

1849 Original US General Land Office survey set a wood post and bearing trees noted as:

12" Sugar	S 88 E	32 links
14" Sugar	N 46 W	15 links

Line trees were noted as a 16" Elm East 19.22 chains and  
 a 8" Tamarack West 19.77 chains.

2003 No resurvey information was found on this corner in the Benton County records.

2007 The Benton County Surveyor's Office found a 1/2" iron pipe capped 22702 in a rock pile with fences north, south, east and west. The found iron fits a split of the distances between the northeast and northwest corners of Section 2 with a four-way fence intersection at the east sixteenth corner fitting within 2 feet of the split to the found iron pipe. The found iron pipe is accepted as marking the corner position.

County Coordinates Obtained by GPS  
 NAD 83 (1996 Adjustment)  
 N-196448.519  
 E-533829.324

2010 The Morrison County records were searched and no survey records were found.

2015 The Benton County Surveyor's Office found the 1/2" iron pipe capped 22702 and verified the 2007 coordinate position.