

384392

Certified, Filed and or Recorded on
October 18, 2011 2:45 PM

BENTON COUNTY MINNESOTA
MARILYN J NOVAK
COUNTY RECORDER

By: BW

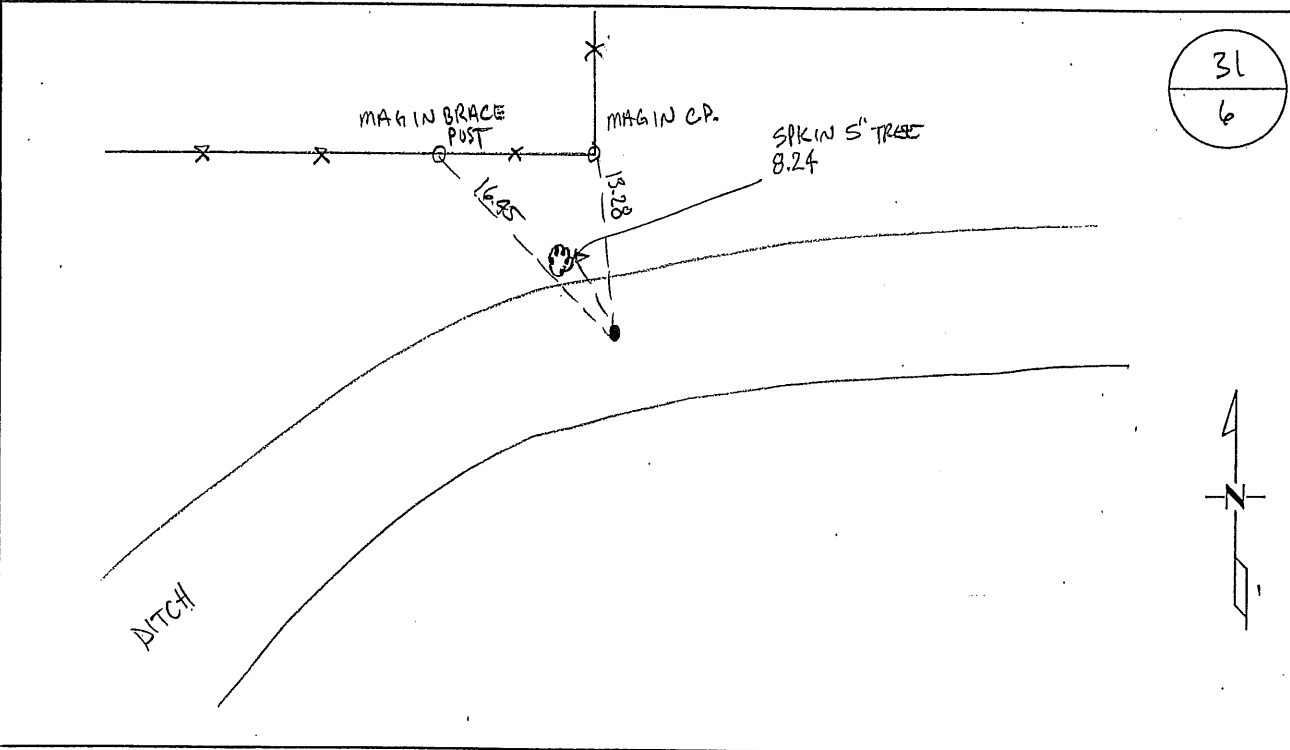
G -- V -- I

CERTIFICATE OF LOCATION OF GOVERNMENT CORNER

NORTH QUARTER Corner of Section 6, Township 38, Range 29
4TH Principal Meridian, State of Minnesota, County of Benton

At the corner location shown on the sketch:

- On _____ found a _____
- left monument as found lowered monument removed monument (explain)
- On 10/11/2011 placed on 1/2" X 14" I.P. WITH CAP #19552



31
6



Statement of evidence for this corner location is on back of this page.

I hereby certify that this document was researched and prepared by me or under my direct supervision and that I am a licensed Land Surveyor under the laws of the State of Minnesota.

Signature George C. Wittstock
Benton County Surveyor
License No. 19552

Date: 14 Oct. 2011

Benton County Surveyor's Office
 Jerome C. Wittstock, County Surveyor
 Minnesota License No. 19552

Statement of Evidence:**B061**

North Quarter Corner of Section 6, Township 38 North, Range 29 West, Alberta Township, 4th Principal Meridian, Benton County, Minnesota.

1849 Original US General Land Office survey set a wood post and bearing trees noted as:

4" Tamarack	N 80 E	76 links
4" Tamarack	S 31 E	60 links

Line tree was noted as a 4" Maple East 19.25 chains.

2002 No resurvey information was found on this corner in the Benton County records.

2011 The Benton County Surveyor's Office found a fence line running to the north and the centerline of a ditch near the corner position. At the east sixteenth on the north line of Section 6 an iron pin in concrete was found. When line and distance are doubled over from the northeast corner of Section 6 through the found pin at the sixteenth, it falls near the centerline of the ditch and on a fence north. The distance to the northeast corner measures 4 feet long of the GLO distance and the distance west measures 28 feet long of GLO distance. Distances closing on the west and north lines of the townships in Benton County vary, often more widely, from GLO distances. Believing the doubled-over location to best available position, a 1/2-inch by 14-inch iron pipe capped 19552 was set at the corner position.

Coordinates Obtained by GPS
 NAD 83 (1996 Adjustment)
 N-196624.494
 E-512518.494