

384394

Certified, Filed and or Recorded on
October 18, 2011 2:45 PM

BENTON COUNTY MINNESOTA
MARILYN J NOVAK
COUNTY RECORDER

By: BW

G - V - I

CERTIFICATE OF LOCATION OF GOVERNMENT CORNER

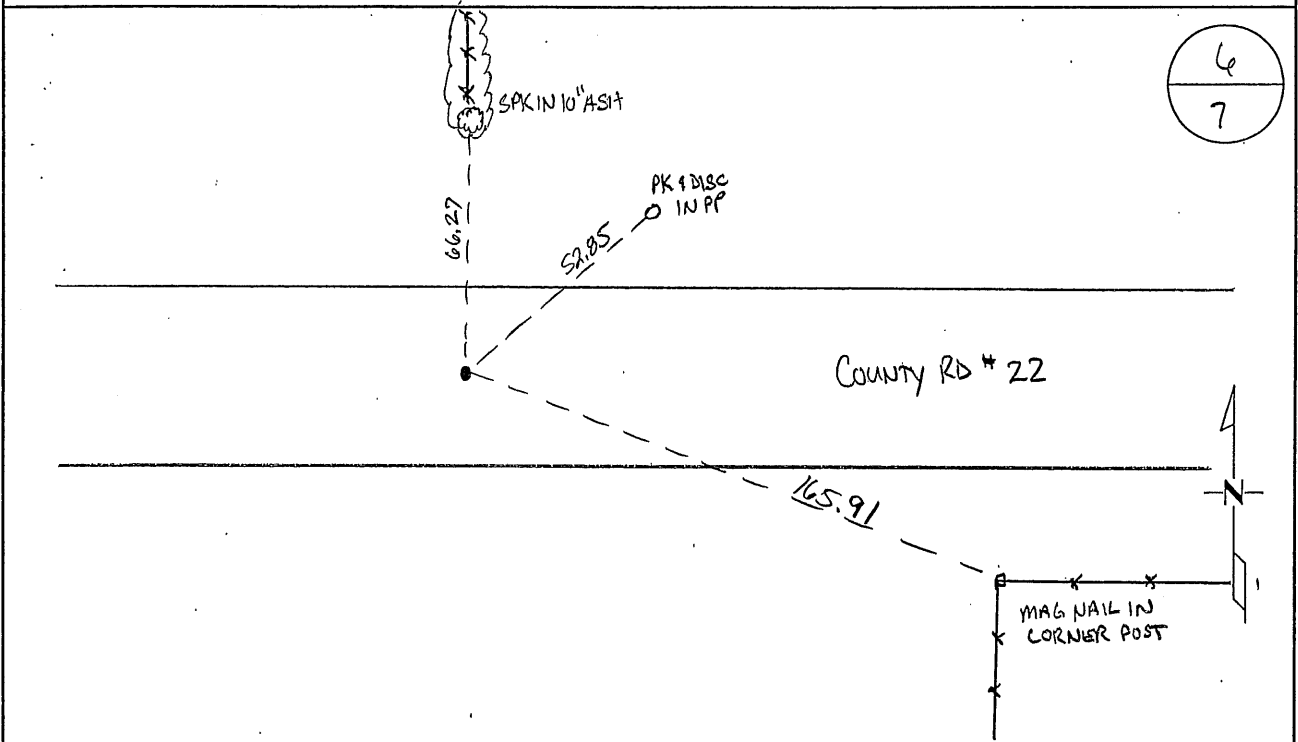
NORTH QUARTER Corner of Section 7, Township 38, Range 29
4TH Principal Meridian, State of Minnesota, County of Benton

At the corner location shown on the sketch:

On 10/11/2011 found a CAST IRON MONUMENT

left monument as found lowered monument removed monument (explain)

On _____ placed an _____



Statement of evidence for this corner location is on back of this page.

I hereby certify that this document was researched and prepared by me or under my direct supervision and that I am a licensed Land Surveyor under the laws of the State of Minnesota.

Signature Jerome C. Wittstock
Benton County Surveyor
License No. 19552

Date: 14 Oct. 2011

Benton County Surveyor's Office
 Jerome C. Wittstock, Deputy County Surveyor
 Minnesota License No. 19552

Statement of Evidence:**B071**

North Quarter Corner of Section 7, Township 38 North, Range 29 West, Alberta Township, 4th Principal Meridian, Benton County, Minnesota.

- 1855 Original US General Land Office survey set a wood post at the location and bearing trees were recorded.
- | | | |
|------------|--------|----------|
| 6" Blk Oak | S 18 W | 23 links |
| 6" Poplar | N 30 E | 16 links |
- 1930 County Surveyor's Record Book 2, page 250, gives a distance of 5,380 feet between section corners and shows the 1/16th corner on the East ½ being set 1345.0 feet from the NE corner. Notes contained in Engineer's notebook No. 79.
- 1939 County Engineer's Notebook No. 128 contains survey of CAR 22 running east to west on section line. No corner is shown, but stationing gives distances of 2696.9 feet to the NE corner and 2683.4 feet to the NW corner to a fence line north.
- 1964 County Engineer's Notebook No. 276 contains a road survey for CSAH No. 22 running west to east on section line. No corner is shown, but stationing notes a fence north with distances of 2685.7 feet to the NW corner and 2696.5 feet to the NE corner.
- 1988 William Lunser, LS 9394, set a cast iron monument on line between the NE and NW Corners of Sec. 7 and on a fence line north. He filed a Certificate of Location (#191250).
 William Lunser notes per Doc. No. 191521 a distance of 2697.28 feet to the NE corner Sec 7.
- 2008 Westwood Professional Services, Inc. found a CIM at the intersection of the centerline of CR 22 and a fence line north. CIM fits 1988 Lunser ties. 1930 notes show ¼ corner determined midway, but if setting lost, this should have been set on a proportion to the GLO chainage which was 77.15 chains. This would place the lost ¼ corner 2789.37 feet west of the NE corner. Lunser's position agrees reasonably with the 1930, 1939, and 1964 assumed locations for an obliterated corner based on the fence line. CIM is accepted as marking the obliterated position for this corner.
 County Coordinates Obtained by GPS
 NAD 83 (1996 Adjustment)
 N-191267.851
 E-513013.037
- 2011 The Benton County Surveyor's Office found the CIM and two of the 2008 reference ties. The 2008 coordinates were verified and an additional reference tie was created.

A 361460

Certified, Filed and or Recorded on
Nov. 04, 2008 AT 12:32PM

Signed: BW
MARILYN J NOVAK G V I
BENTON COUNTY MINNESOTA
MARILYN J NOVAK
COUNTY RECORDER

CERTIFICATE OF LOCATION OF GOVERNMENT CORNER

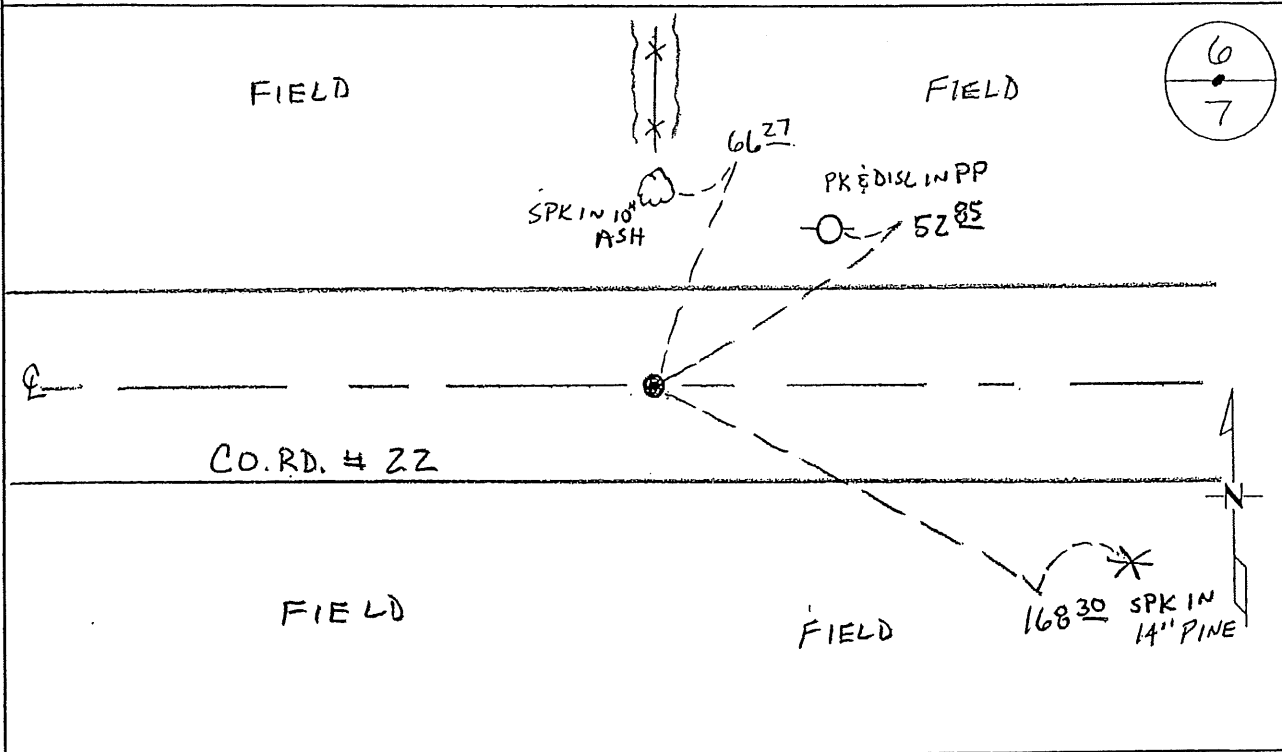
NORTH QUARTER Corner of Section 7, Township 38, Range 29
4TH Principal Meridian, State of Minnesota, County of Benton

At the corner location shown on the sketch:

On 10-28-08 found a CAST IRON MONUMENT

left monument as found lowered monument removed monument (explain)

On _____ placed an _____



Statement of evidence for this corner location is on back of this page.

I hereby certify that this document was researched and prepared by me or under my direct supervision and that I am a licensed Land Surveyor under the laws of the State of Minnesota.

Signature [Handwritten Signature]
Deputy County Surveyor
License No. 43932

Date: 11/3/08

Statement of Evidence:

B071

North Quarter Corner of Section 7, Township 38 North, Range 29 West, Alberta Township, 4th Principal Meridian, Benton County, Minnesota.

- 1855 Original US General Land Office survey set a wood post at the location and bearing trees were recorded.
- | | | |
|------------|--------|----------|
| 6" Blk Oak | S 18 W | 23 links |
| 6" Poplar | N 30 E | 16 links |
- 1930 County Surveyor's Record Book 2, page 250, gives a distance of 5,380 feet between section corners and shows the 1/16th corner on the East ½ being set 1345.0 feet from the NE corner. Notes contained in Engineer's notebook No. 79.
- 1939 County Engineer's Notebook No. 128 contains survey of CAR 22 running east to west on section line. No corner is shown, but stationing gives distances of 2696.9 feet to the NE corner and 2683.4 feet to the NW corner to a fence line north.
- 1964 County Engineer's Notebook No. 276 contains a road survey for CSAH No. 22 running west to east on section line. No corner is shown, but stationing notes a fence north with distances of 2685.7 feet to the NW corner and 2696.5 feet to the NE corner.
- 1988 William Lunser, LS 9394, set a cast iron monument on line between the NE and NW Corners of Sec. 7 and on a fence line north. He filed a Certificate of Location (#191250).
William Lunser notes per Doc. No. 191521 a distance of 2697.28 feet to the NE corner Sec 7.
- 2008 Westwood Professional Services, Inc. found a CIM at the intersection of the centerline of CR 22 and a fence line north. CIM fits 1988 Lunser ties. 1930 notes show ¼ corner determined midway, but if setting lost, this should have been set on a proportion to the GLO chainage which was 77.15 chains. This would place the lost ¼ corner 2789.37 feet west of the NE corner. Lunser's position agrees reasonably with the 1930, 1939, and 1964 assumed locations for an obliterated corner based on the fence line. CIM is accepted as marking the obliterated position for this corner.
County Coordinates Obtained by GPS
NAD 83 (1996 Adjustment)
N-191267.851
E-513013.037

CERTIFICATE OF LOCATION OF GOVERNMENT CORNER

North 1/4 Corner of Section 7, Township 38, Range 29, 4th P.M.

STATE OF MINNESOTA, County of Benton

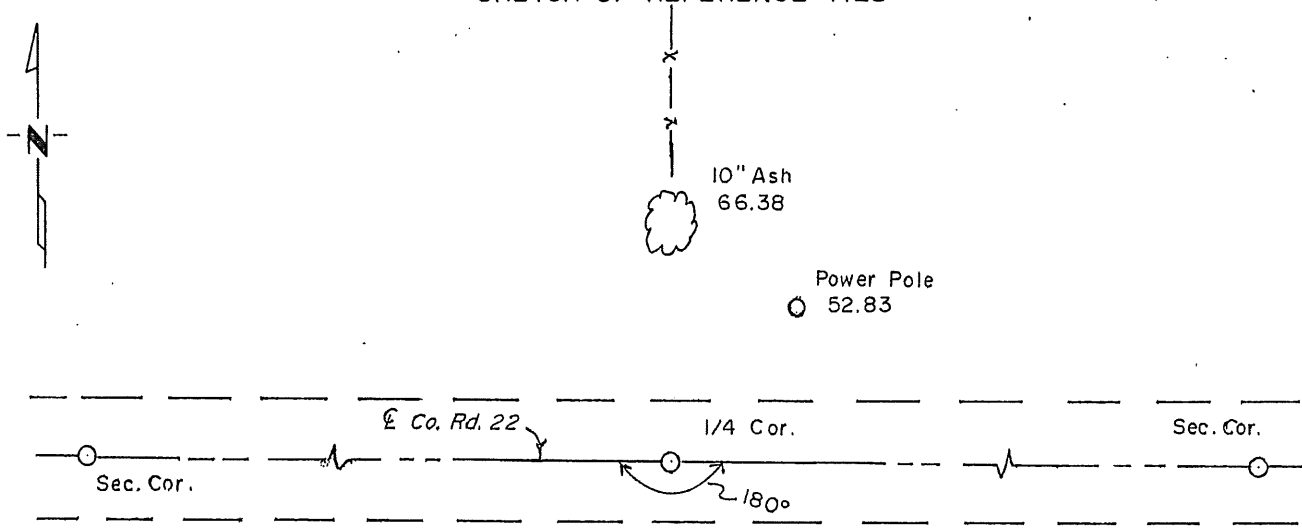
At the corner location shown on the sketch:

On _____ found a _____
DATE

left monument as found, lowered monument, removed monument (explain)

On 5-13-88 placed a Benton County Cast Iron Monument
DATE

SKETCH OF REFERENCE TIES



12" PINE
168.48

Note: Ties are 40
Penny Spikes

Statement of evidence relative to this corner location is on back of page.

I hereby certify that this document and the data contained herein was prepared by me or under my direct supervision.

William J. Linn (2/15/88)
SIGNATURE DATE

Registration No. 9394

- Land Surveyor, Professional Engineer
- County Surveyor, County Engineer

OFFICE OF THE REGISTER OF DEEDS

County of _____

I hereby certify that this document was filed in the Reg. of Deeds office at _____ .M. on the _____ day of _____ A.D., 19 _____

Register of Deeds _____

By _____, Deputy

DOCUMENT NO. _____

Statement of Evidence:

Road construction has apparently destroyed any old monument at location.

5-13-88:


Set 1/4 corner on line between Southeast corner and Southwest corner of Section 6-38-29, and on a fence line to the north. This location fell on the centerline of County Road.

191250

OFFICE OF
BENTON COUNTY RECORDER
BENTON COUNTY, AR
CERTIFIED TO BE FILED
AND/OR RECORDED ON

JAN 12 11 59 AM '89

ALICE G. EUGENIEVAN
COUNTY RECORDER

BY  DEPUTY