

404573

Certified, Filed and or Recorded on
July 29, 2014 12:58 PM

BENTON COUNTY MINNESOTA
MARILYN J NOVAK
COUNTY RECORDER

By: CK

6 - V - I

CERTIFICATE OF LOCATION OF GOVERNMENT CORNER

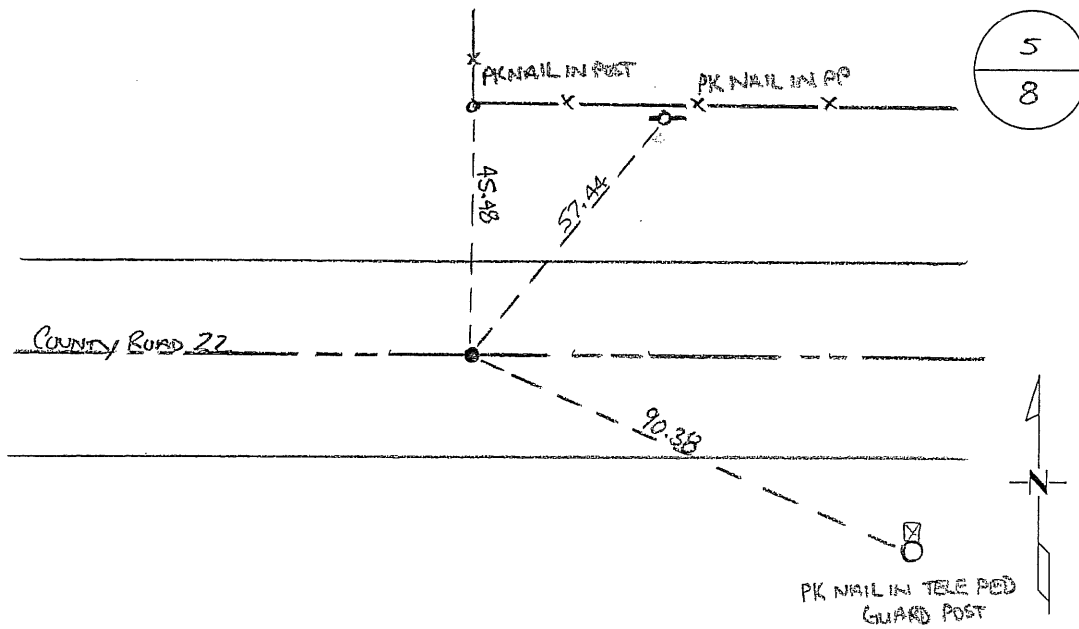
NORTH QUARTER Corner of Section 8, Township 38, Range 29
4TH Principal Meridian, State of Minnesota, County of Benton

At the corner location shown on the sketch:

On 11/17/09 found a 1/2" IRON PIPE RLS # 19552

left monument as found lowered monument removed monument (explain)

On _____ placed an _____



Statement of evidence for this corner location is on back of this page.

I hereby certify that this document was researched and prepared by me or under my direct supervision and that I am a licensed Land Surveyor under the laws of the State of Minnesota.

Signature Jerome C. Wittstock
Benton County Surveyor
License No. 19552

Date: 7-29-2014

Benton County Surveyor's Office
 Jerome C. Wittstock, County Surveyor
 Minnesota License No. 19552

Statement of Evidence:**B081**

North Quarter Corner of Section 8, Township 38 North, Range 29 West, Alberta Township, 4th Principal Meridian, Benton County, Minnesota.

1855 Original US General Land Office survey set a wood post at the location and bearing trees were recorded.

16" W Birch	N 31 ½ E	32 links
14" W Birch	S 32 ½ E	27 links

1939 County Engineer's Notebook No. 128 contains survey of CAR 22 running east to west on section line. No corner is shown, but stationing gives distances of 2646.4 feet to the NE corner and 2653.1 feet to the NW corner to a fence line north.

1964 County Engineer's Notebook No. 276 contains a road survey for CSAH No. 22 running west to east on section line. No corner is shown, but stationing notes a fence north with distances of 2650.5 feet to the NW corner and 2648.2 feet to the NE corner.

2009 The Benton County Surveyor's Office set a 1/2" by 14" iron pipe capped 19552 to mark the corner position in the east-west centerline of CSAH No. 22 on a fence to the north fitting the fence location proportionally with the 1939 and 1964 distances east and west.

Coordinates Obtained by GPS
 NAD 83 (1996 Adjustment)
 N-191317.774
 E-518360.996