

409194

Certified, Filed and or Recorded on
April 29, 2015 2:20 PM

BENTON COUNTY MINNESOTA
MARILYN J NOVAK
COUNTY RECORDER

By: ck

6 -- 4 -- 1

CERTIFICATE OF LOCATION OF GOVERNMENT CORNER

NORTH QUARTER Corner of Section 11, Township 383, Range 29
4TH Principal Meridian, State of Minnesota, County of Benton

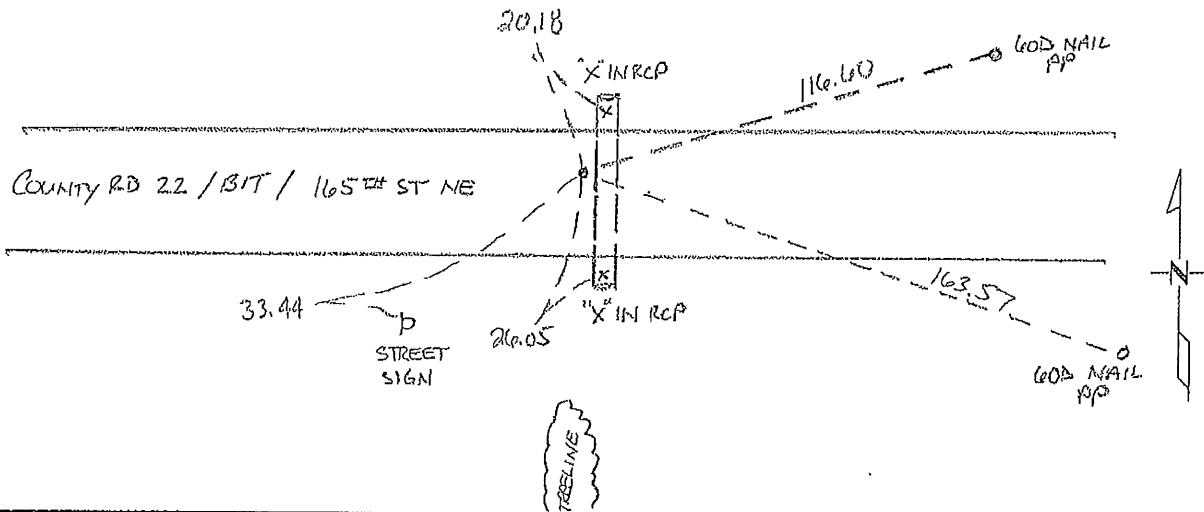
At the corner location shown on the sketch:

On 03/25/2015 found a 1/2" OPEN PIPE 3 FT NORTH OF EAST/WEST
CENTERLINE AND TREE LINE SOUTH

left monument as found lowered monument removed monument (explain)

On _____ placed an _____

2
11



Statement of evidence for this corner location is on back of this page.

I hereby certify that this survey, plan, or report was prepared by me or under my direct supervision and that I am a duly Licensed Land Surveyor under the laws of the state of Minnesota.

Signature Jerome C. Wittstock
Jerome C. Wittstock, PS, CFedS, Benton County Surveyor
License No. 19552

Date: 4/29/2015

Benton County Surveyor's Office
 Jerome C. Wittstock, County Surveyor
 Minnesota License No. 19552

Statement of Evidence:

B111

North Quarter Corner of Section 11, Township 38 North, Range 29 West, Alberta Township, 4th Principal Meridian, Benton County, Minnesota.

1855 Original US General Land Office survey set a wood post at this location and bearing trees were recorded.

10" Aspen	S 75 W	50 links
10" Aspen	S 29 E	46 links

1939 County Engineer's Notebook No. 128 contains survey of CAR 22 running east to west on section line. Corner is shown as a spike set in center of road in line with fences north and south. Ties:

FP	SE	22.25
FP	SE	27.65

Stationing gives distances of 2575.9 feet to the NE corner and 2582.2 feet to the NW corner with a delta angle of 1-07 left.

1958 County Engineer's Notebook No. 207 contains a survey for CSAH No. 22 running west to east on the section line. Corner is shown as a PI set in center of road with fence line south. Tie:

Cor FP	S	31.7
--------	---	------

Stationing gives distance of 2585.2 feet to the NW corner and 2573.0 to the NE corner with a delta angle of 1-03' right.

2002 No resurvey information was found on this corner in the Benton County Surveyor's records.

2009 The Benton County Surveyor's Office found down fences north and south and an east-west centerline. The overall mile measures within 0.2 feet of the 1939 distance. Since the overall mile fits the 1939 information so well, it was positioned proportionally east-west and using the record delta angle fitting the current east-west centerline within 3 feet. A 1/2" iron pipe capped 19552 was set to mark the corner position.

Coordinates Obtained by GPS
 NAD 83 (1996 Adjustment)
 N- 191048.092
 E- 534198.153

2015 The Benton County Surveyor's Office found the iron pipe and verified the 2009 coordinates.