

409197

Certified, Filed and or Recorded on  
April 29, 2015 2:20 PM

BENTON COUNTY MINNESOTA  
MARILYN J NOVAK  
COUNTY RECORDER

By: Ch

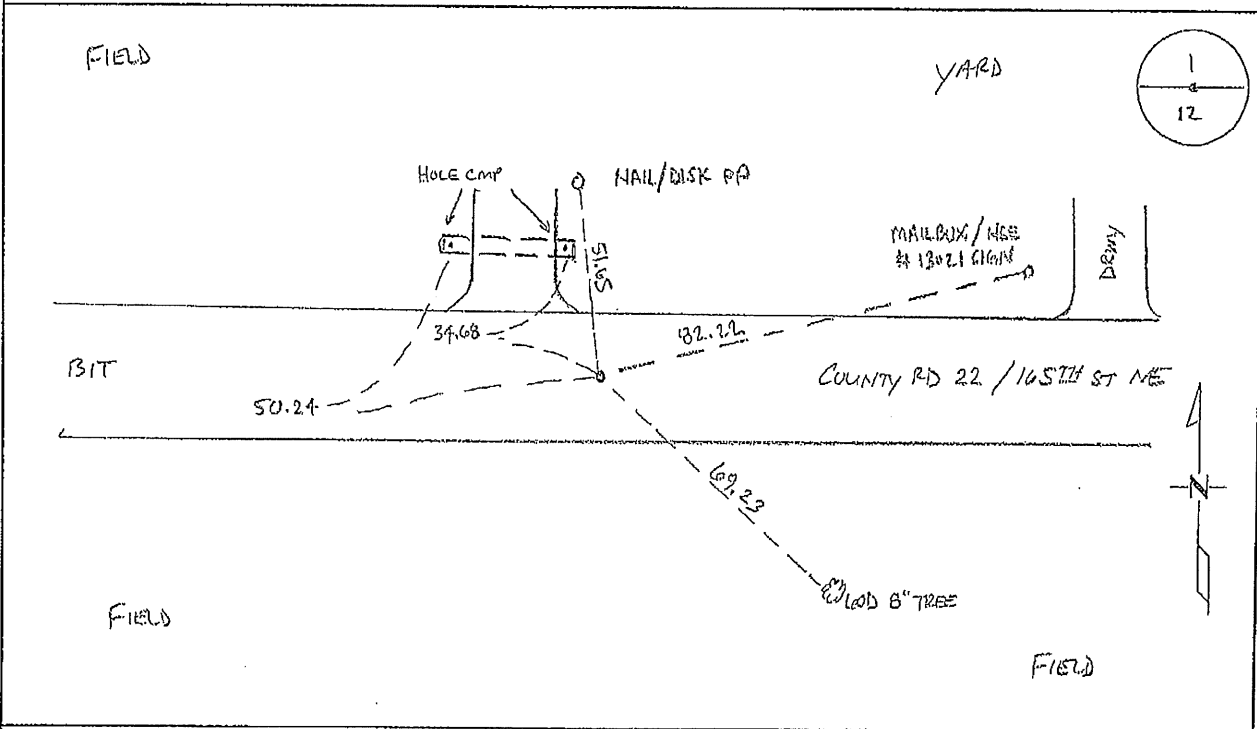
G -- V -- I

# CERTIFICATE OF LOCATION OF GOVERNMENT CORNER

NORTH QUARTER Corner of Section 12, Township 38, Range 29  
4TH Principal Meridian, State of Minnesota, County of Benton

At the corner location shown on the sketch:

- On 03/25/2015 found a CAST IRON MONUMENT ON EAST/WEST CENTER-LINE AND OCCUPATION NORTH/SOUTH BURIED 2.4 FT
- left monument as found       lowered monument       removed monument (explain)
- On \_\_\_\_\_ placed an \_\_\_\_\_



Statement of evidence for this corner location is on back of this page.

I hereby certify that this survey, plan, or report was prepared by me or under my direct supervision and that I am a duly Licensed Land Surveyor under the laws of the state of Minnesota.

Signature Jerome C. Wittstock  
Jerome C. Wittstock, PS, CFedS, Benton County Surveyor  
License No. 19552

Date: 4/29/2015

Benton County Surveyor's Office  
 Jerome C. Wittstock, County Surveyor  
 Minnesota License No. 19552

**Statement of Evidence:**

B121

North Quarter Corner of Section 12 Township 38 North, Range 29 West, Alberta Township, 4<sup>th</sup> Principal Meridian, Benton County, Minnesota.

1855 Original US General Land Office survey set a wood post at this location and bearing trees were recorded.

16" Sugar	N 27 W	34 links
7" Blk Ash	S 35 E	32 links

1939 County Engineer's Notebook No. 128 contains survey of CAR 22 running east to west on section line. Corner is shown as a spike set in center of road in line with fences north and south. Ties:

3" R. Oak	N	50.0
6" Pop.	NE	50.6

Stationing gives distances of 2636.4 feet to the NE corner and 2659.6 feet to the NW corner with the point being a POT.

1963 County Engineer's Notebook No. 249 contains survey of CAR 22 running west to east on section line. Corner is shown as a spike set in center of road in line with fence north. Ties:

PP	N	51.65
TP	SE	84.5

Stationing gives distances of 2635.7 feet to the NE corner and 2659.4 feet to the NW corner with the point being a POT.

1985 David Regan, LS 12236, set a cast iron monument at the centerline of roads east/west and a fence line north/south. He filed a Certificate of Location (#176054).

2007 The Benton County Surveyor's Office found the CIM set in 1985 in the east-west centerline of County State Aid Highway No. 22. The distances east and west fit the 1939 distances within a foot. The CIM is accepted as marking the corner position.

Coordinates Obtained by GPS  
 NAD 83 (1996 Adjustment)  
 N- 190920.253  
 E- 539432.531

2015 The Benton County Surveyor's Office found the CIM and verified the 2007 coordinates.

# CERTIFICATE OF LOCATION OF GOVERNMENT CORNER

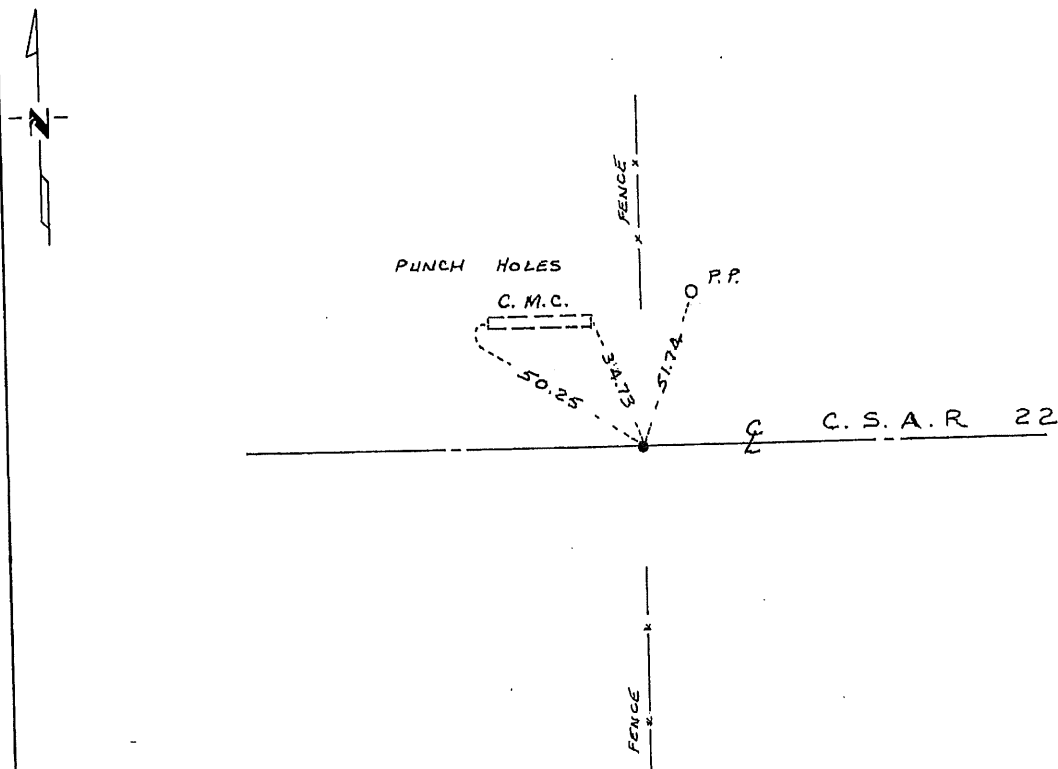
North Quarter \_\_\_\_\_ Corner of Section 12, Township 38, Range 29, 4th P.M.

STATE OF MINNESOTA, County of Benton

At the corner location shown on the sketch:

- On \_\_\_\_\_ found a \_\_\_\_\_  
DATE
- left monument as found,  lowered monument,  removed monument (explain)
- On 5/2/85 placed a Benton County cast iron monument in centerline  
DATE County Road east-west and fence lines north-south

## SKETCH OF REFERENCE TIES



176054

Statement of evidence relative to this corner location is on back of page.

I hereby certify that this document and the data contained herein was prepared by me or under my direct supervision.

David P. Regan 12/13/85  
SIGNATURE DATE

Registration No. 12236

- Land Surveyor,  Professional Engineer
- County Surveyor,  County Engineer

OFFICE OF THE <sup>County Recorder</sup> REGISTER OF DEEDS  
County of Benton

I hereby certify that this document was filed in the <sup>County Recorder</sup> Reg. of Deeds office at 1 P.M. on the 1 day of January A.D., 1986

<sup>County Recorder</sup> Register of Deeds Alice C. Engelmeier

By [Signature], Deputy

DOCUMENT NO. \_\_\_\_\_

12/13/85  
38-29  
A.W.L.B.  
38-28