

Certified, Filed and or Recorded on August 12, 2014 1:21 PM

BENTON COUNTY MINNESOTA  
MARILYN J NOVAK  
COUNTY RECORDER

By: CK

G -- V -- I

### CERTIFICATE OF LOCATION OF GOVERNMENT CORNER

NORTH QUARTER Corner of Section 14, Township 38, Range 29

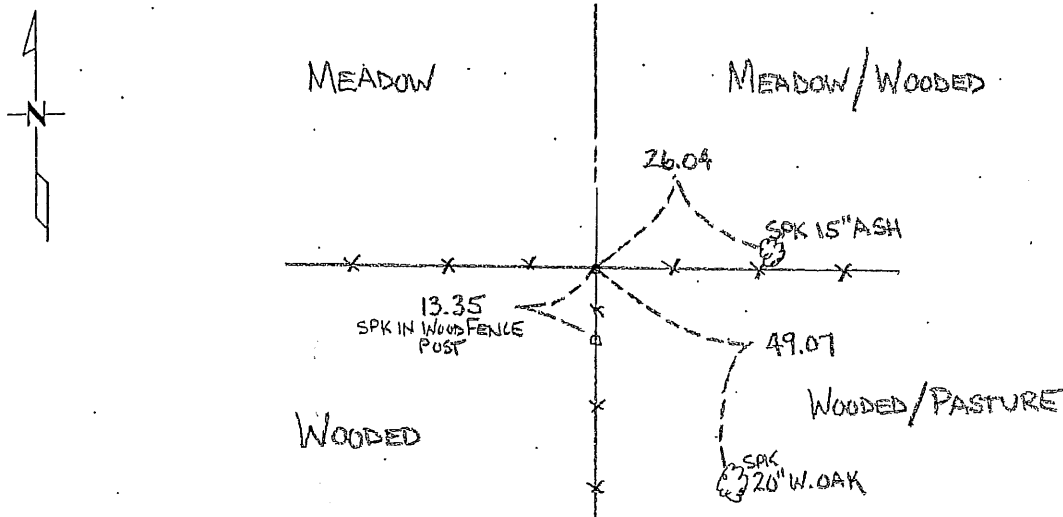
4TH Principal Meridian, State of Minnesota, County of Benton

At the corner location shown on the sketch:

On 1/22/07 found a 1" X 1/8" FLAT IRON WITH 1/2" RLS #24332 ALONG SIDE OF IT  
AT FENCES S, E, W

left monument as found     lowered monument     removed monument (explain)

On \_\_\_\_\_ placed an \_\_\_\_\_  
DATE



Statement of evidence for this corner location is on back of this page.

I hereby certify that this document was researched and prepared by me or under my direct supervision and that I am a licensed Land Surveyor under the laws of the State of Minnesota.

Signature: Jerome C. Wittstock Date: 7-29-2014 License No. 19552

Title:  Land Surveyor     Professional Engineer     County Surveyor     County Engineer

Benton County Surveyor's Office  
Jerome C Wittstock, County Surveyor  
Minnesota License No. 19552

**Statement of Evidence:**

**B141**

North Quarter Corner of Section 14, Township 38 North, Range 29 West, Alberta Township, 4<sup>th</sup> Principal Meridian, Benton County, Minnesota.

1855 Original US General Land Office survey set a wood post at this location and bearing trees were recorded.

10" Poplar	N 22 W	33 links
9" Linden	? 13 E	21 links

2002 No resurvey information was found on this corner in the Benton County records.

2007 The Benton County Surveyor's Office found a 1" x 1/8" flat iron with a 1/2" iron pipe capped 24332 on the west side of it at the corner of fences east-west and south. The found flat iron fits a split of the distances east and west within 2 feet and falling 33 feet south of a straight line between section corners. The flat iron is accepted as marking the corner position.

Coordinates Obtained by GPS

NAD 83 (1996 Adjustment)

N-185700.077

E-534331.063