

409199

Certified, Filed and or Recorded on
April 29, 2015 2:20 PM

BENTON COUNTY MINNESOTA
MARILYN J NOVAK
COUNTY RECORDER

By: CP

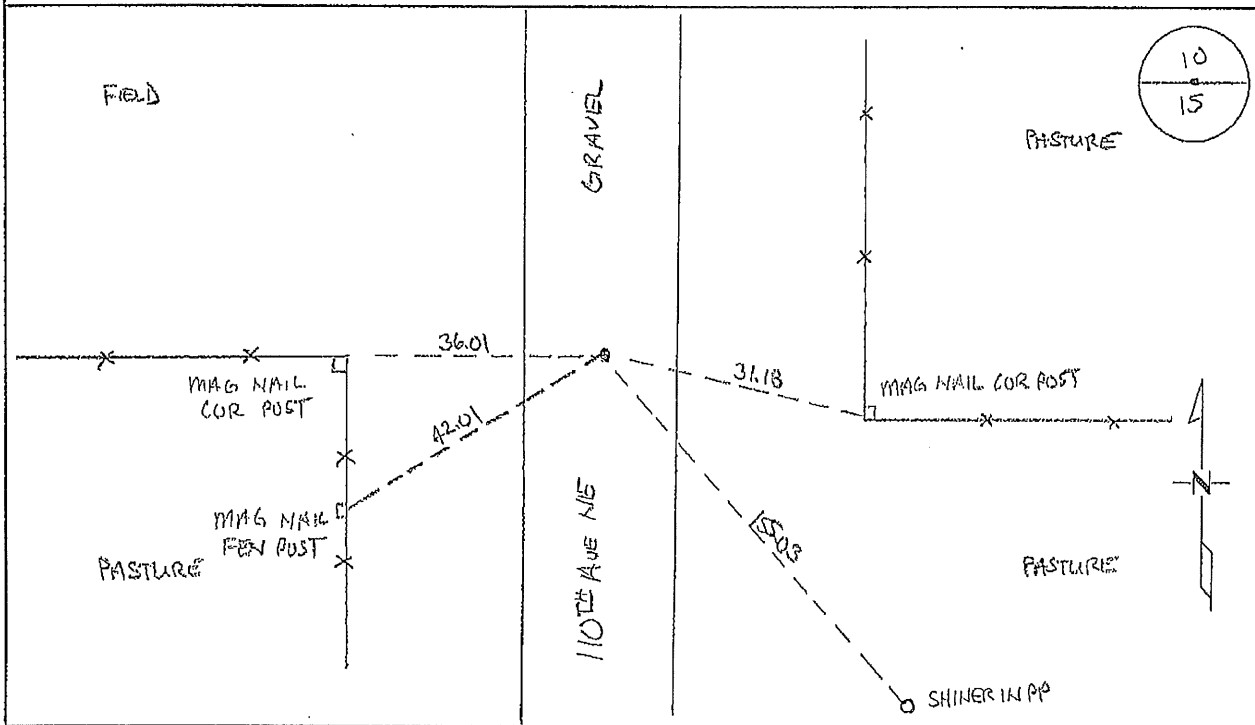
G -- V -- I

CERTIFICATE OF LOCATION OF GOVERNMENT CORNER

NORTH QUARTER Corner of Section 15, Township 38, Range 29
4TH Principal Meridian, State of Minnesota, County of Benton

At the corner location shown on the sketch:

- On 03/25/2015 found a 1/2" IRON PIPE BURIED 0.6 FT ON NORTH/SOUTH CENTER-LINE AND FENCE WEST. 10 FT NORTH OF FENCE LINE EAST
- left monument as found lowered monument removed monument (explain)
- On _____ placed an _____



Statement of evidence for this corner location is on back of this page.

I hereby certify that this survey, plan, or report was prepared by me or under my direct supervision and that I am a duly Licensed Land Surveyor under the laws of the state of Minnesota.

Signature Jerome C. Wittstock
Jerome C. Wittstock, PS, CFedS, Benton County Surveyor
License No. 19552

Date: 4/29/2015

Benton County Surveyor's Office
 Jerome C. Wittstock, County Surveyor
 Minnesota License No. 19552

Statement of Evidence:

B151

North Quarter Corner of Section 15, Township 38 North, Range 29 West, Alberta Township, 4th Principal Meridian, Benton County, Minnesota.

1855 Original US General Land Office survey set a wood post at this location and bearing trees were recorded.

18" W Oak	N 29 W	29 links
12" Blk Oak	S 21 W	3 links

1978 Paul Wellen, LS 10461, found a 1/2" iron pipe at the centerline of roads north/south and a fence line west, approximately 10 feet north of a fence line east. He replaced it with a cast iron monument and filed a Certificate of Location (#?).

2002 No resurvey information was found on this corner in the Benton County records.

2008 The Benton County Surveyor's Office found a 1/2" open iron pipe in the north-south centerline on a fence west, approximately 10 feet north of a fence east. The iron pipe measures 2715.07 feet to a 1/2" capped iron pipe at the northeast corner and 2670.48 feet west to a 1/2" open iron pipe at the northwest corner of Section 15. GPS coordinates were collected.

Coordinates Obtained by GPS
 NAD 83 (1996 Adjustment)
 N-185874.859
 E-529006.670

2012 The Benton County Surveyor's Office found the 1/2" open iron pipe in the north-south centerline and fence line west. A fence north and iron pipe capped Bonestroo 23682 were found at the east sixteenth on the north line of Section 15. The fence falls about 17.5 west of the capped iron. No addition evidence of the quarter corner position was found. The 1/2" open iron pipe is accepted as marking the obliterated corner position.

2015 The Benton County Surveyor's Office found the 1/2" open iron pipe and verified the 2008 coordinates.

CERTIFICATE OF LOCATION OF GOVERNMENT CORNER

N 1/4 Corner of Section 15, Township 38, Range 29, _____ P.M.

STATE OF MINNESOTA, County of Benton

At the corner location shown on the sketch:

- On _____ found a _____
DATE
- left monument as found, lowered monument, removed monument (explain)
- On _____ placed a _____
DATE

SKETCH OF REFERENCE TIES



Filed under South 1/4 Corner Section 10, T38 R 29

Certificate # 151873

Statement of evidence relative to this corner location is on back of page.

I hereby certify that this document and the data contained herein was prepared by me or under my direct supervision.

SIGNATURE DATE

- Registration No. _____
- Land Surveyor, Professional Engineer
 - County Surveyor, County Engineer

OFFICE OF THE REGISTER OF DEEDS
County of _____

I hereby certify that this document was filed in the Reg. of Deeds office at _____ .M. on the _____ day of _____ A.D., 19 ____

Register of Deeds _____
By _____, Deputy
DOCUMENT NO. _____

Should BE North 1/4 corner Section 15, T38 R29
Index No. _____

CERTIFICATE OF LOCATION OF GOVERNMENT CORNER

I did set the South $\frac{1}{4}$ Corner of Section 10, Township 38, Range 29, 4 P.M.

STATE OF MINNESOTA, County of Benton

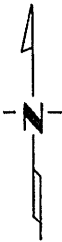
At the corner location shown on the sketch: which was evidenced by a 1/2" iron pipe on the center line of north-south township road, on west fence line, at

On 10-17-79 found a approx. 10 feet north of east fence line
DATE

left monument as found, lowered monument, removed monument (explain)

On _____ placed a 1/2" iron pipe
DATE

SKETCH OF REFERENCE TIES



Refer to next page

Statement of evidence relative to this corner location is on back of page.

I hereby certify that this document and the data contained herein was prepared by me or under my direct supervision.

Paul E. Wellen
SIGNATURE DATE

Registration No. 10461

Land Surveyor, Professional Engineer

County Surveyor, County Engineer

County Recorder
OFFICE OF THE REGISTER OF DEEDS
Benton
County of _____

I hereby certify that this document was filed in the Reg. of Deeds office at 10 A.M. on the 26 day of March A.D., 1979

Register of Deeds F. A. Johnson
By _____, Deputy

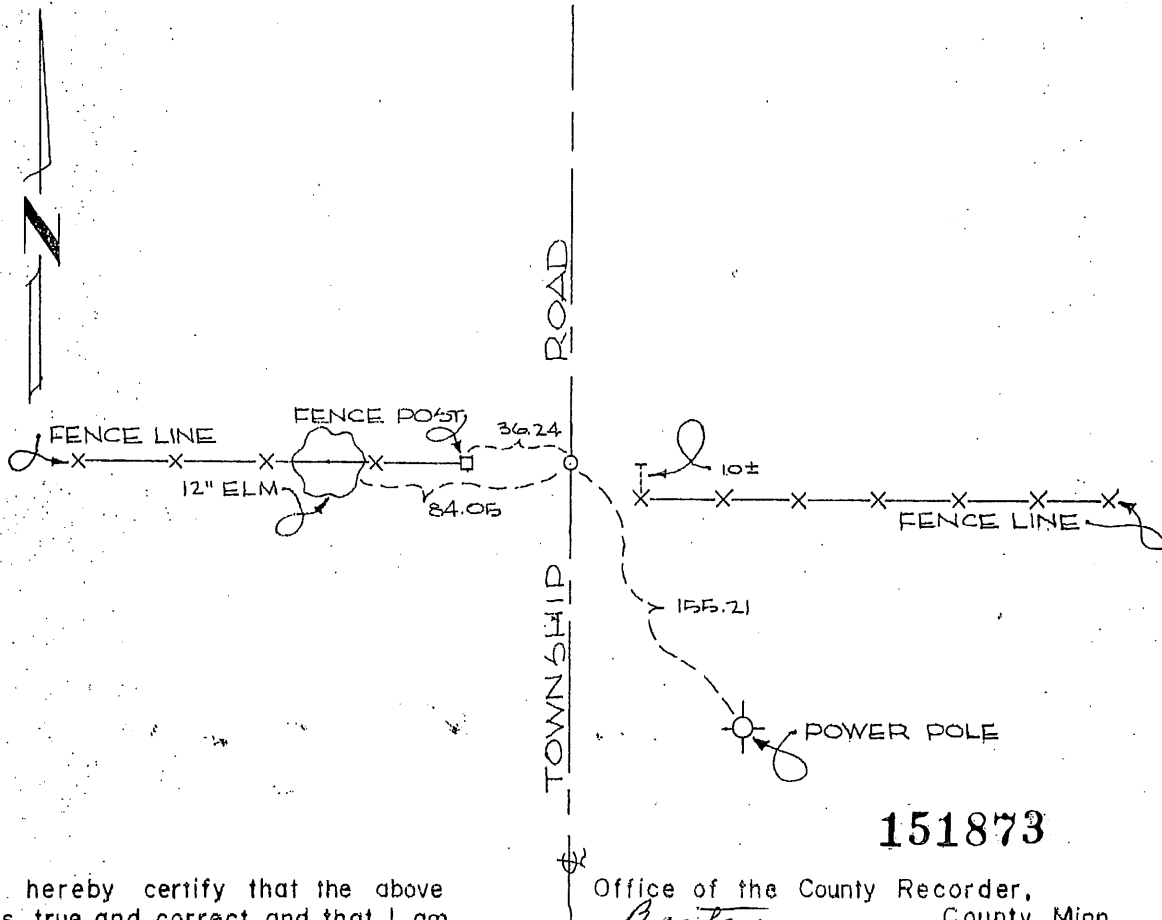
DOCUMENT NO. 151873

Should BE North 1/4 corner Section 15, T38 R29

CERTIFICATE OF LOCATION OF GOVERNMENT CORNER

I hereby certify that on the 17 day of October, 19 78
I did set the South 1/4 corner of Section 10,
Twp. 38, Rg. 29, Benton County, Minnesota, which
was evidenced by a 1/2" iron pipe, on the center line of north-south
township road, on west fence line, and approx. 10 feet north of east fence line.

I further certify that in order to perpetuate said corner I did
at the exact location thereof place a permanent marker consisting
of a 1/2" iron pipe and that
I did establish witness or reference monuments as shown below:



151873

I hereby certify that the above
is true and correct and that I am
a registered Land Surveyor under
the laws of the State of Minnesota.

Paul J. Miller

Minn. Registration No. 10461

Office of the County Recorder,
Benton County, Minn.

I hereby certify that the within instrument
was filed for record in this office on the
26th day of March, 1979
at 10 A.M.

F.A. Johnson
County Recorder

By _____ Deputy.