

Certified, Filed and or Recorded on
Dec. 24, 2008 AT 08:56AM

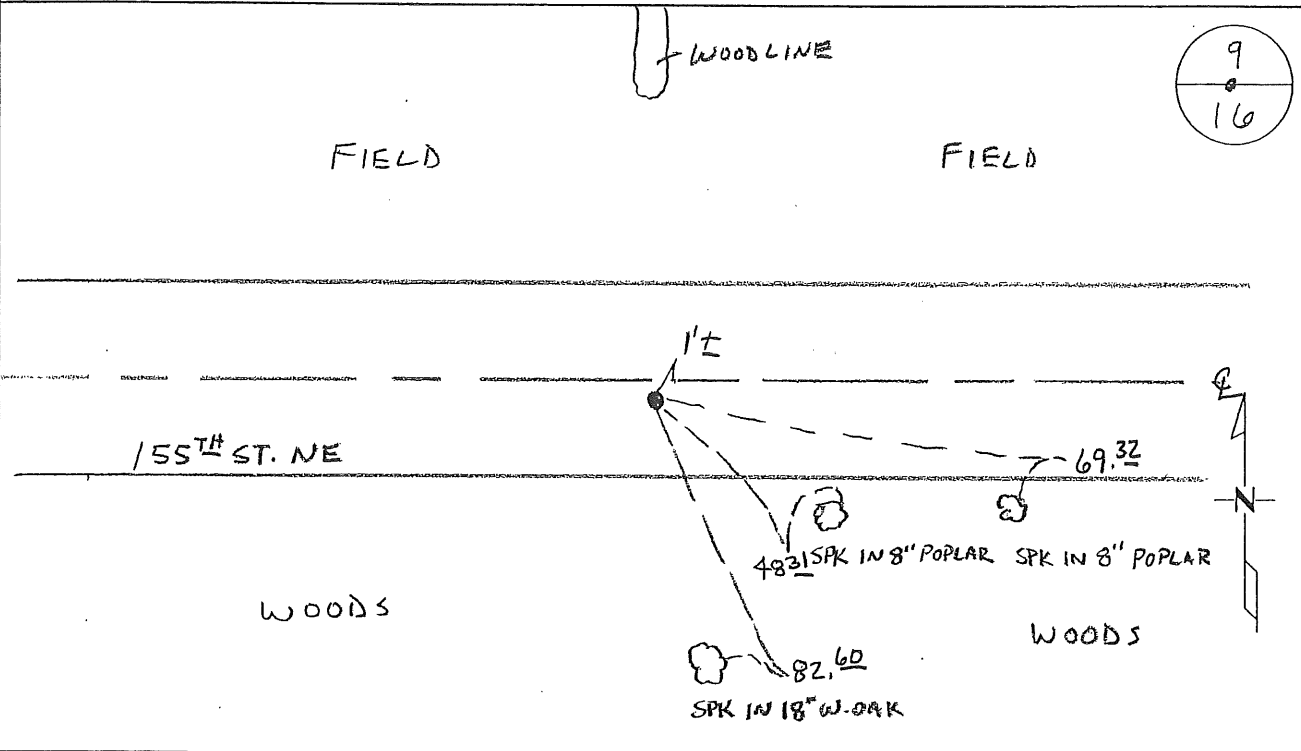
Signed: BW
MARILYN J NOVAK 4 V I
BENTON COUNTY MINNESOTA
MARILYN J NOVAK
COUNTY RECORDER

CERTIFICATE OF LOCATION OF GOVERNMENT CORNER

NORTH QUARTER Corner of Section 16, Township 38, Range 29
4TH Principal Meridian, State of Minnesota, County of Benton

At the corner location shown on the sketch:

- On 10-28-08 found a 1/2" IRON PIPE # 22702
- left monument as found lowered monument removed monument (explain)
- On _____ placed an _____



Statement of evidence for this corner location is on back of this page.

I hereby certify that this document was researched and prepared by me or under my direct supervision and that I am a licensed Land Surveyor under the laws of the State of Minnesota.

Signature [Handwritten Signature]
Deputy County Surveyor
License No. 43932

Date: 12/17/08

Statement of Evidence:

B161

North Quarter Corner of Section 16, Township 38 North, Range 29 West, Alberta Township, 4th Principal Meridian, Benton County, Minnesota.

1855 Original US General Land Office survey set a wood post at this location and bearing trees were recorded.

13" Birch	N 43 W	22 links
12" Sugar	S 29 W	10 links

2001 Westwood Professional Services, Inc. found an iron capped #22702 (Kevin Festler) at the centerline of a road east/west and occupation north. Measured 2634.13 feet to the NW corner.

County Coordinates Obtained by GPS (#22702)
NAD 83 (1996 Adjustment)
N-185916.155
E-823719.173

2002 No resurvey information was found on this corner in the Benton County records.

2008 Westwood Professional Services, Inc. found a iron capped #22702 (Kevin Festler) ~1 foot south of the traveled centerline of 155th St. NE and longstanding occupation to the north. Measured 2634.13 feet to the NW corner and 2617.16 feet to the NE corner of Section 16. Capped iron is accepted as marking the obliterated position for this corner. Coordinates obtained by GPS coincide with 2002 position.