

CERTIFICATE OF LOCATION OF GOVERNMENT CORNER

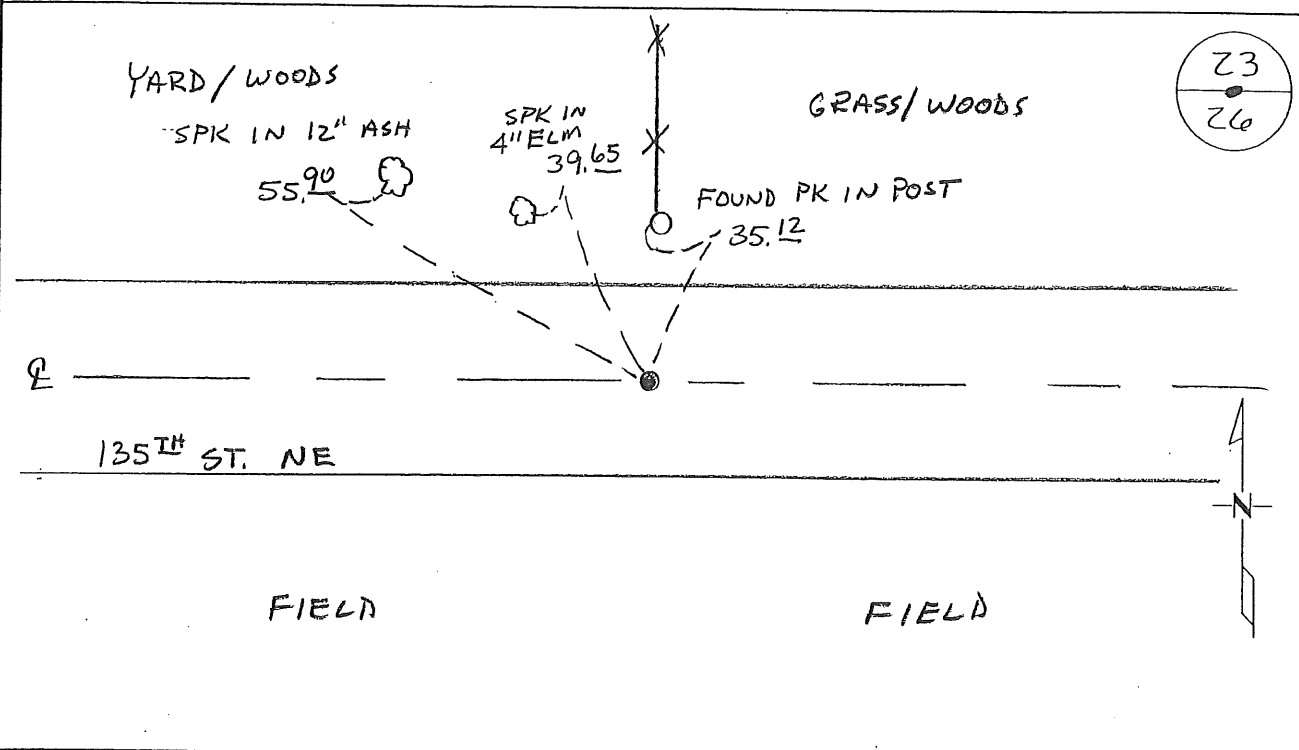
NORTH QUARTER Corner of Section 26, Township 38, Range 29
4TH Principal Meridian, State of Minnesota, County of Benton

At the corner location shown on the sketch:

On 11-13-08 found a 1/2" OPEN IRON PIPE

left monument as found lowered monument removed monument (explain)

On _____ placed an _____



Statement of evidence for this corner location is on back of this page.

I hereby certify that this document was researched and prepared by me or under my direct supervision and that I am a licensed Land Surveyor under the laws of the State of Minnesota.

Signature Ch. [Signature]
Deputy County Surveyor
License No. 43932

Date: 12/17/08

Benton County Surveyor's Office
 Chris Hogleund, Deputy County Surveyor
 Minnesota License No. 43932

Statement of Evidence:

B261

North Quarter Corner of Section 26, Township 38 North, Range 29 West, Alberta Township, 4th Principal Meridian, Benton County, Minnesota.

1855 Original US General Land Office survey set a wood post at this location and bearing trees were recorded.

8" Linden	S 39 ½ E	22 links
12" Sugar	N 11 E	30 links

1923 County Engineer's Notebook No. 43 and County Surveyor's Record Book 2, page 288, notes the GLO BTs:

8" Maple	SE	22 links
12" Maple	NE	30 links

Notes show distance of 80.30 chains for the north line with 40.15 chains given for the corner midway. (This is the GLO information, which indicates the notes were copied for a survey, but does not indicate what was found or set.)

2008 Westwood Professional Services, Inc. found a ½" iron pipe in the centerline of 135th St. NE on line with fence line north. Iron pipe is 1.0 feet north of straight line between NE and NW corners of Section 26 and 4.58 feet east of lost position. Measured 2627.34 feet to the NW corner and 2618.17 to the NE corner.

Township road and old fence line are longstanding evidence of section line location and fit reasonably well with lost position. Iron pipe is accepted as marking the obliterated position for this corner.

Coordinates Obtained by GPS to iron pipe

NAD 83 (1996 Adjustment)

N-175150.012

E-534397.483

12-24

A 362625

Certified, Filed and or Recorded on
Dec. 26, 2008 AT 10:40AM

Signed: CK
MARILYN J NOVAK G V I
BENTON COUNTY MINNESOTA
MARILYN J NOVAK
COUNTY RECORDER

DOCUMENT COVER SHEET

Document Name: **GOVERNMENT CORNER**

BENTON COUNTY OF

THE PUBLIC

Document Date: **12/17/2008**

This cover sheet is being attached to this document to provide room for recording information and is considered part of this document