

405001

Certified, Filed and or Recorded on August 19, 2014 1:18 PM

BENTON COUNTY MINNESOTA
MARILYN J NOVAK
COUNTY RECORDER

By: BW

G-V-I

CERTIFICATE OF LOCATION OF GOVERNMENT CORNER

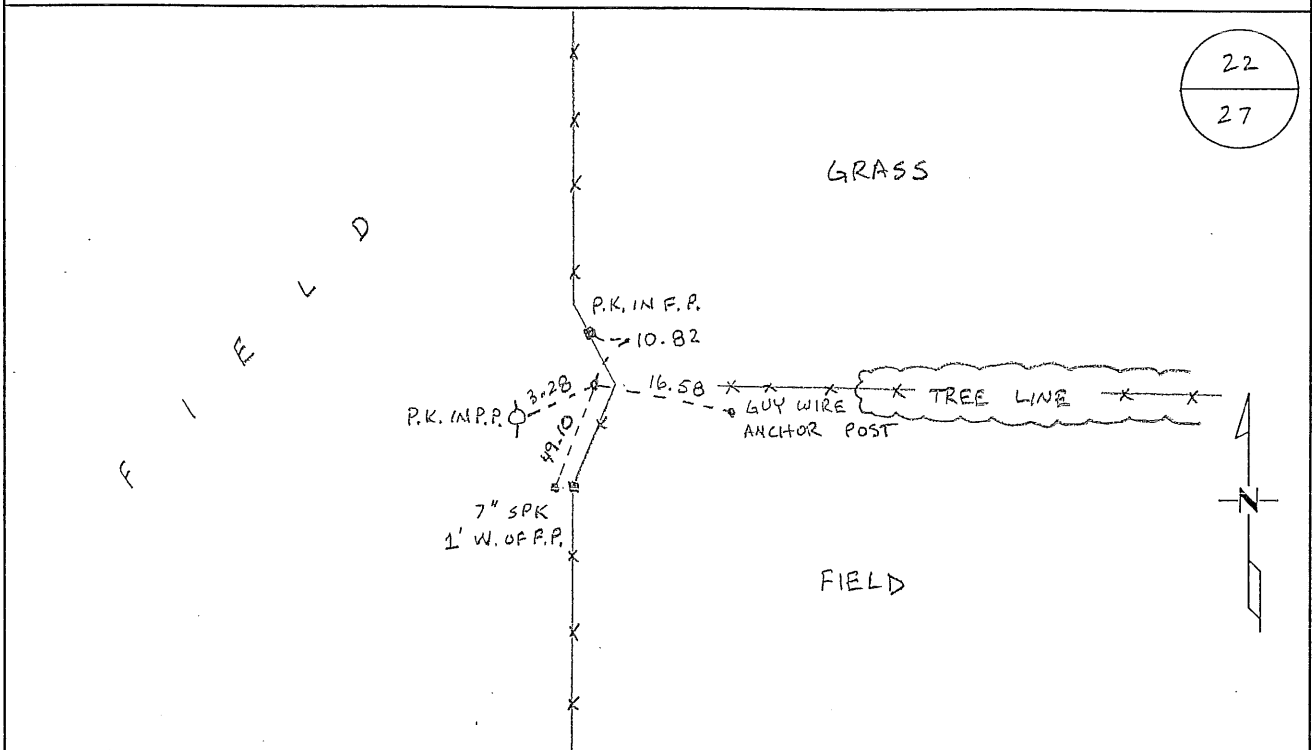
NORTH QUARTER Corner of Section 27, Township 38, Range 29
4TH Principal Meridian, State of Minnesota, County of Benton

At the corner location shown on the sketch:

On 07/29/09 found a 1/2" IRON PIPE RLS # 23682

left monument as found lowered monument removed monument (explain)

On _____ placed an _____



Statement of evidence for this corner location is on back of this page.

I hereby certify that this document was researched and prepared by me or under my direct supervision and that I am a licensed Land Surveyor under the laws of the State of Minnesota.

Signature Jerome C. Wittstock
Benton County Surveyor
License No. 19552

Date: 8-18-2014

Benton County Surveyor's Office
Jerome C. Wittstock, Deputy County Surveyor
Minnesota License No. 19552

Statement of Evidence:

B271

North Quarter Corner of Section 27, Township 38 North, Range 29 West, Alberta Township, 4th Principal Meridian, Benton County, Minnesota.

1855 Original US General Land Office survey set a wood post at this location and bearing trees were recorded.

6" Oak	S 5 W	12 links
7" Poplar	N 21 W	9 links

2002 No resurvey information has been found on this corner in the Benton County records.

2009 The Benton County Surveyor's Office found a 1/2" iron pipe capped 23682 on fences north, south and east. The position measures 2571.98 feet to the northeast corner and 2585.43 feet to the northwest corner of Section 27, falling 6.5 feet east and 7 feet north of the lost position. Since the found iron fits typical measurements in Benton County and falls at the intersection of fences, it is accepted as marking the corner position.

Coordinates Obtained by GPS
NAD 83 (1996 Adjustment)
N-175137.537
E-529199.572