

409206

Certified, Filed and or Recorded on  
April 29, 2015 2:20 PM

BENTON COUNTY MINNESOTA  
MARILYN J NOVAK  
COUNTY RECORDER

By: CK

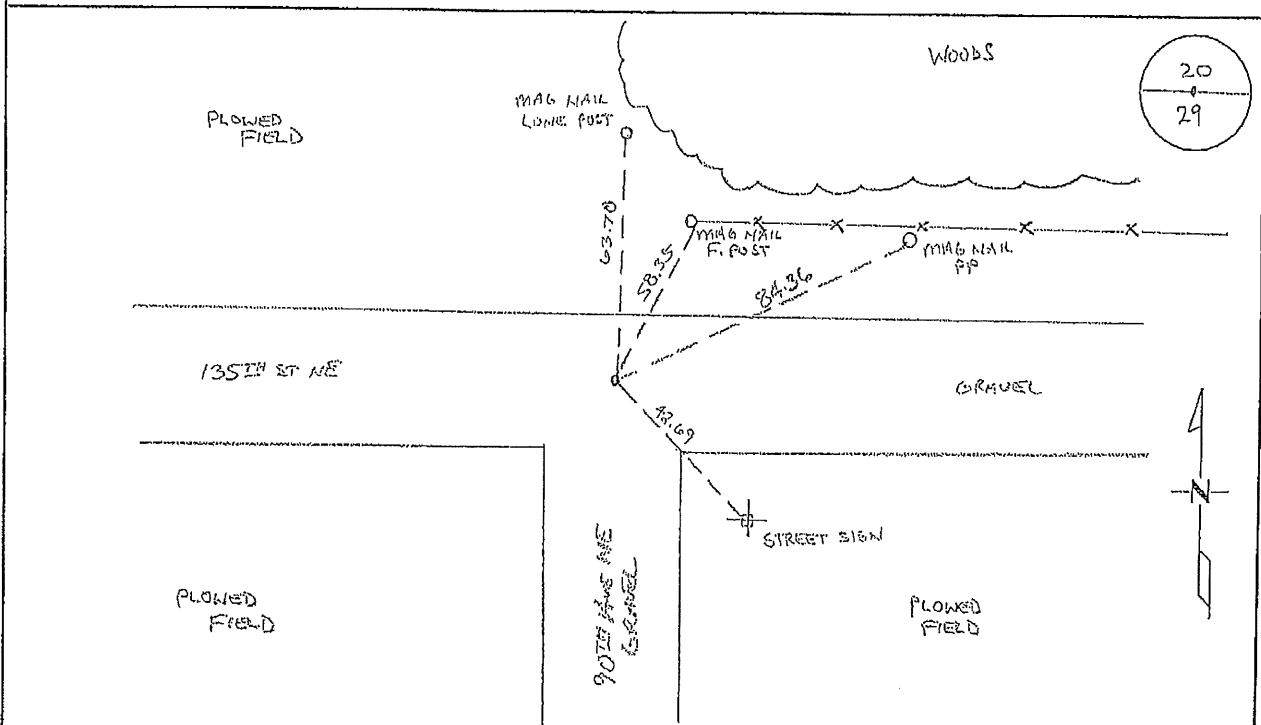
6 -- V -- I

# CERTIFICATE OF LOCATION OF GOVERNMENT CORNER

NORTH QUARTER Corner of Section 29, Township 30, Range 29  
4TH Principal Meridian, State of Minnesota, County of Benton

At the corner location shown on the sketch:

- On \_\_\_\_\_ found a \_\_\_\_\_
- left monument as found       lowered monument       removed monument (explain)
- On 03/24/2015 placed an 1/2" IRON FIRE CAPPED LS 19552



Statement of evidence for this corner location is on back of this page.

I hereby certify that this survey, plan, or report was prepared by me or under my direct supervision and that I am a duly Licensed Land Surveyor under the laws of the state of Minnesota.

Signature Jerome C. Wittstock  
Jerome C. Wittstock, PS, CFedS, Benton County Surveyor  
License No. 19552

Date: 4/29/2015

Benton County Surveyor's Office  
 Jerome C. Wittstock, County Surveyor  
 Minnesota License No. 19552

**Statement of Evidence:**

B291

North Quarter Corner of Section 29, Township 38 North, Range 29 West, Alberta Township, 4<sup>th</sup> Principal Meridian, Benton County, Minnesota.

1855 Original US General Land Office survey marked an 18" Bur Oak for the corner and bearing trees were recorded:

15" Bur Oak	S 28 E	29 links
10" Blk Oak	N 8 W	22 links

A Line tree is noted as a 12" Sugar West 6.68 chains.

2001 Westwood Professional Services, Inc. located intersection of roads east-west and south and fence line north as approximate corner. No monument was found. Measured 2637.94 feet to the NW corner and 2632.34 feet to the NE corner. Intersection point is 1.23 feet north of a straight line between section corners and 2.8 feet west of the midpoint. Corner should probably be set lost.

2002 No resurvey information was found on this corner in the Benton County records.

2015 The Benton County Surveyor's Office set a 1/2" x 14" iron pipe capped 19552 at the lost position falling at the intersection of centerlines and fence north.

Coordinates Obtained by GPS  
 NAD 83 (1996 Adjustment)  
 N-174985.048  
 E-518757.140