

Certified, Filed and or Recorded on August 19, 2014 1:18 PM

BENTON COUNTY MINNESOTA
MARILYN J NOVAK
COUNTY RECORDER

By: BW

G -- V -- I

CERTIFICATE OF LOCATION OF GOVERNMENT CORNER

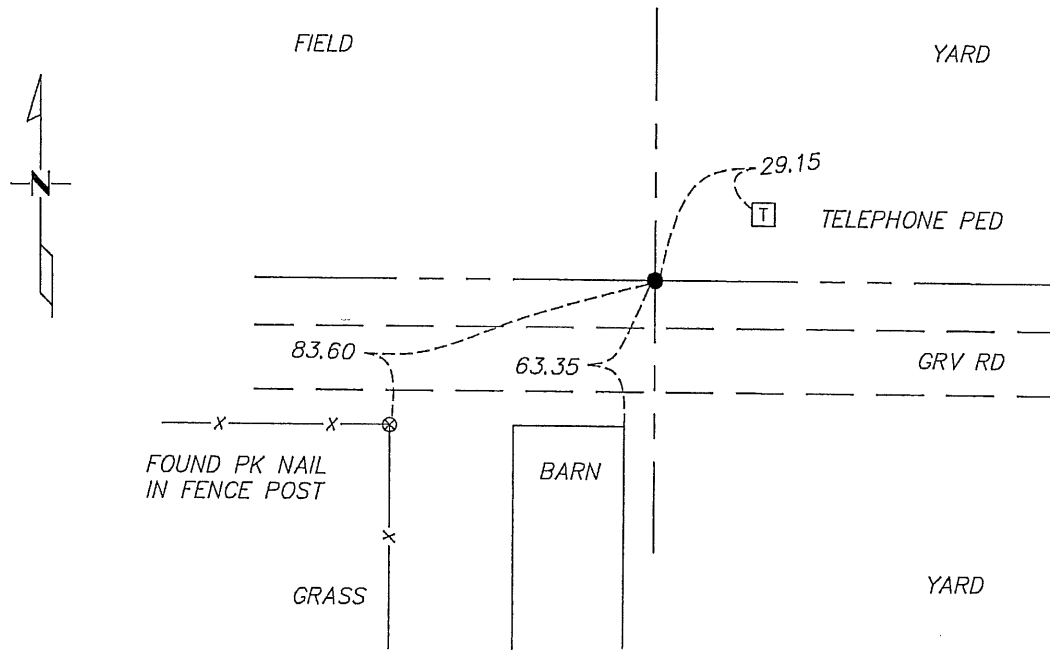
North quarter _____ Corner of Section 36 , Township 38 , Range 29
4TH Principal Meridian, State of Minnesota, County of _____ Benton

At the corner location shown on the sketch:

On 03/31/06 found a 3/4" OPEN PIPE
DATE

left monument as found lowered monument removed monument (explain)

On _____ placed an _____
DATE



25
36

Approved: _____ Date: _____
COUNTY SURVEYOR

Statement of evidence for this corner location is on back of this page.

I hereby certify that this document was researched and prepared by me or under my direct supervision and that I am a licensed Land Surveyor under the laws of the State of Minnesota.

Signature Jerome C Wittstock Date 8-19-2014 License No. 19552

Title: Land Surveyor Professional Engineer County Surveyor County Engineer

Statement of Evidence:

B361

North Quarter Corner of Section 36, Township 38 North, Range 29 West, Alberta Township, 4th Principal Meridian, Benton County, Minnesota.

1855 Original US General Land Office survey set a wood post at this location and bearing trees were recorded.

12" Sugar	S 26 W	29 links
20" Sugar	N 55 E	11 links

2002 No resurvey information, was found on this corner in the Benton County records.

2006 Westwood Professional Services found a 3/4" open iron pipe which fits a split between the northeast and northwest corners of Section 36-38-29. The monument falls 10 feet north of the east-west centerline of 125TH St. NE. No additional corner evidence was found.

Coordinates Obtained by GPS
NAD 83 (1996 Adjustment)
N-169695.612
E-539749.029