

Certified, Filed and or Recorded on July 29, 2014 12:58 PM

BENTON COUNTY MINNESOTA
MARILYN J NOVAK
COUNTY RECORDER

By: CK

G - V - 1

CERTIFICATE OF LOCATION OF GOVERNMENT CORNER

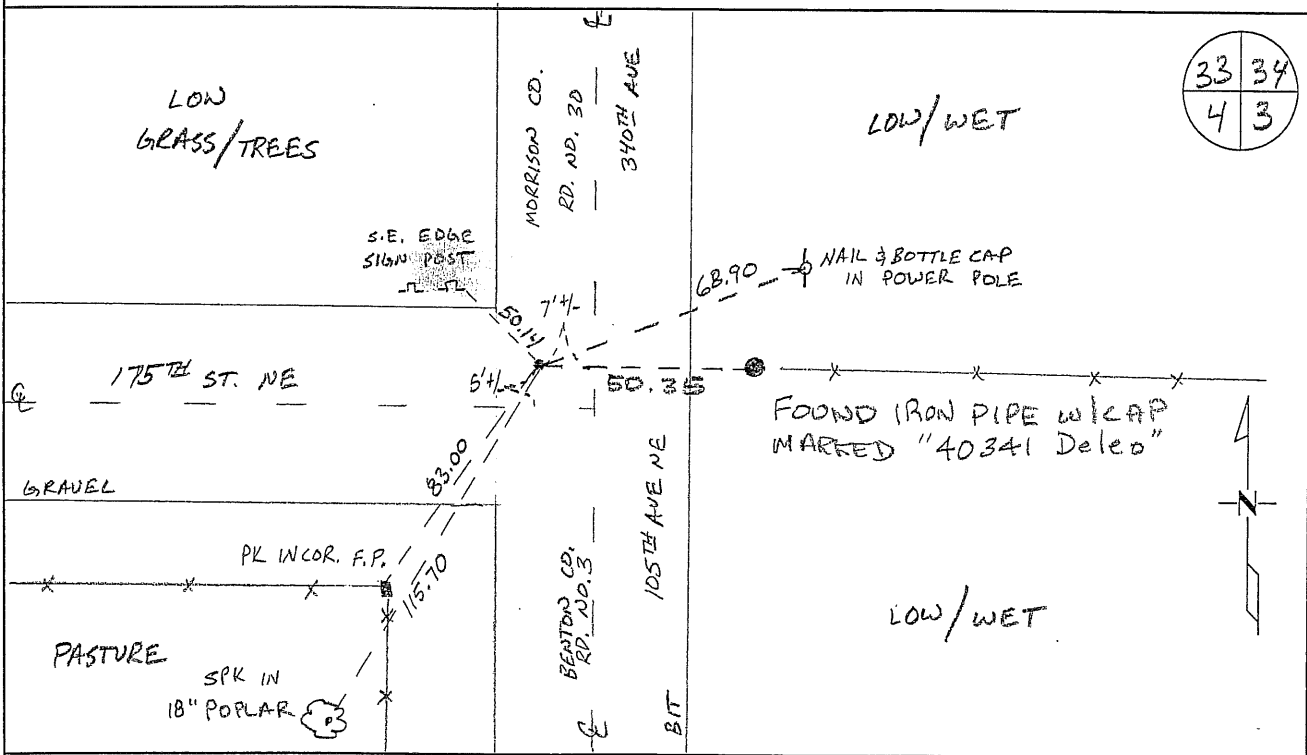
NORTHEAST Corner of Section 4, Township 38, Range 29
4TH Principal Meridian, State of Minnesota, County of Benton

At the corner location shown on the sketch:

On 04/05/2010 found a CAST IRON MONUMENT ON N/S CENTERLINE P.I.

left monument as found lowered monument removed monument (explain)

On _____ placed an _____



33	34
4	3

Statement of evidence for this corner location is on back of this page.

I hereby certify that this document was researched and prepared by me or under my direct supervision and that I am a licensed Land Surveyor under the laws of the State of Minnesota.

Signature Jerome C. Wittstock
Benton County Surveyor
License No. 19552

Date: 7-29-2014

Benton County Surveyor's Office
 Jerome C. Wittstock, County Surveyor
 Minnesota License No. 19552

Statement of Evidence:**B042**

Northeast Corner of Section 4, Township 38 North, Range 29 West, Alberta Township, 4th Principal Meridian, Benton County, Minnesota.

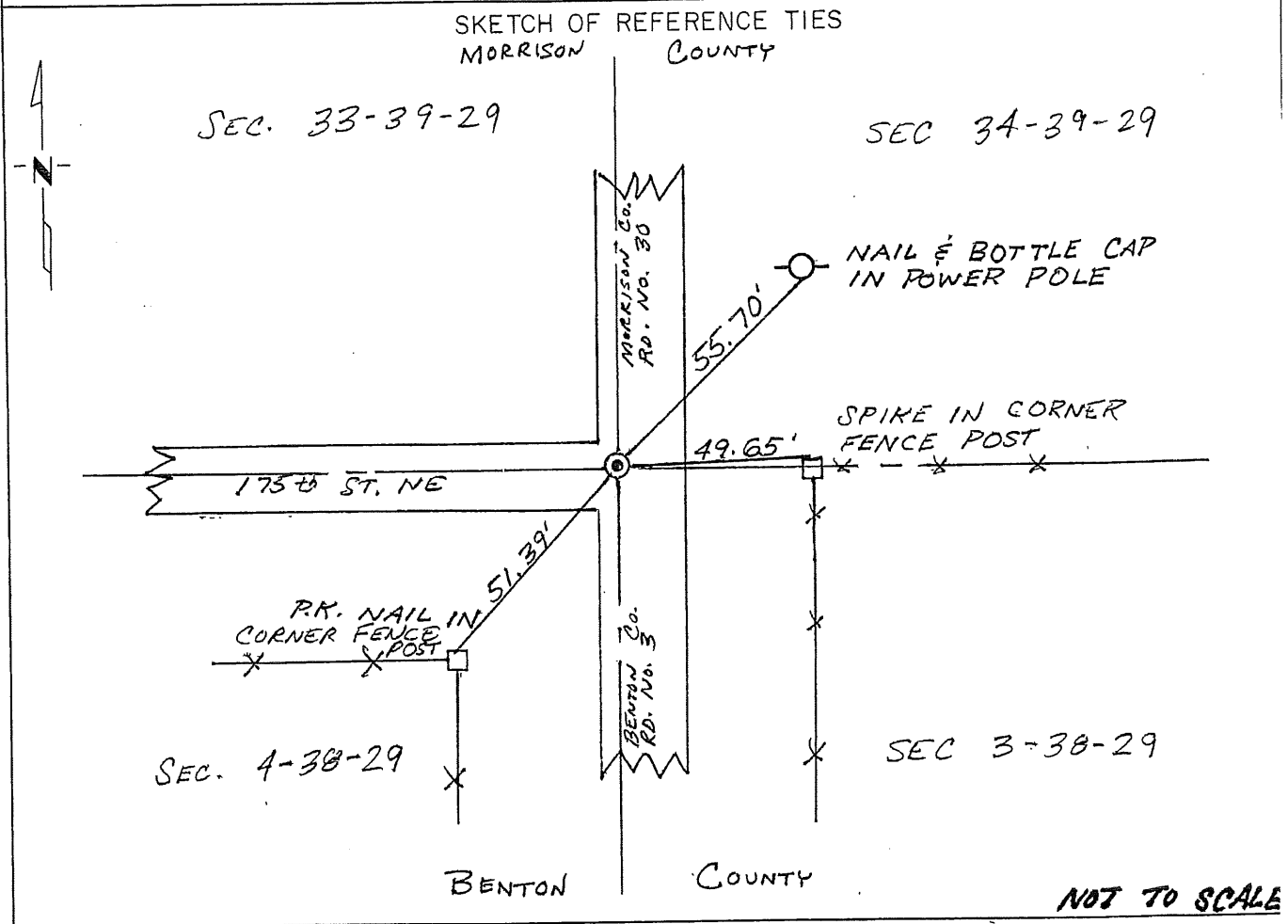
- 1849 Original US General Land Office survey set a wood post and bearing trees noted as
- | | | |
|------------|----------|-----------|
| 10" Poplar | N 1 E | 148 links |
| 8" Poplar | N 21 ½ W | 140 links |
| 6" Blk Oak | S 34 ½ E | 123 links |
- Line trees were noted as a 10" Poplar West 17.50 chains.
- 1932 County Engineer's Notebook No. 66 contains road survey for SAR 3 running south to north and terminating at this corner. Notes show corner marked by a hub set with road west and fence east.
- Ties:
- | | | |
|------------|--------|--------|
| 4" Poplar | S 75 W | 116.2' |
| 10" Poplar | S 45 W | 138.9 |
- Stationing gives distance of 2720.1 feet to the East ¼ corner of Section 4.
- 1951 County Engineer's Notebook No. 190 contains survey of SAR No. 3 running from the south to north. Survey terminates at this corner shown being in center of road with town road west and ditch east. Same ties as listed in County Surveyor's Record Book 2, page 244, which notes a hub with ties:
- | | | |
|------------|----|-------|
| 4" Poplar | SW | 107.7 |
| 12" Poplar | SW | 138.0 |
- Other ties crossed out:
- | | | |
|------------|--------|-------|
| 10" Poplar | S 45 W | 138.0 |
| 4" Poplar | S 75 W | 107.7 |
- Stationing gives distance of 2720.2 feet to the East ¼ corner of Section 4.
- 1991 William Lunser, LS 9394, notes a distance of 2682.90 feet to the East ¼ corner Sec. 4 per Doc. No. 234197.
- 1994 Kevin Festler, LS 22702, found a spike 4.7 feet west of the centerline of roads north-south and 4.0 feet north of centerline of road west and a fence line east. He replaced it with a cast iron monument and filed a Certificate of Location (#226901).
- 1995 Comstock and Davis performed GPS work under contract with Benton County and Coordinates Obtained by GPS NAD 83 (1986 Adjustment) to a CIM:
- | | |
|----|------------|
| N- | 196582.839 |
| E- | 525865.111 |
- 2004 Certificate of Survey by David Regan, LS 12236, shows iron pipe found at the corner with a distance of 2719.13 feet to the East 1/4 corner.
- 2007 The Benton County Surveyor found a CIM fitting the 1994 Coordinates Obtained by GPS NAD 83 (1996 Adjustment)
- | | |
|----|------------|
| N- | 196583.366 |
| E- | 525864.960 |
- 2010 Westwood Professional Services found a CIM and confirmed the coordinates from 2007. No additional information was found in the Morrison County records.
- 2014 The Benton County Surveyor's Office reviewed the corner position and accepted the CIM as marking the corner position.

CERTIFICATE OF LOCATION OF GOVERNMENT CORNER

Northeast Corner of Section 4, Township 38, Range 29, 4th P.M.
STATE OF MINNESOTA, County of Benton

At the corner location shown on the sketch:

- On 8-17-94 found a spike
DATE
- left monument as found, lowered monument, removed monument (explain)
- On 9-23-94 placed a Benton County Cast Iron Monument
DATE



Statement of evidence relative to this corner location is on back of page.

I hereby certify that this document and the data contained herein was prepared by me or under my direct supervision.

[Signature] Nov. 14, 1994
SIGNATURE DATE

Registration No. 22702

- Land Surveyor, Professional Engineer
- County Surveyor, County Engineer

OFFICE OF THE COUNTY RECORDER

County of _____

I hereby certify that this document was filed in the Co. Recorders office at _____ .M. on the _____ day of _____ A.D., 19 _____

County Recorder _____

By _____, Deputy

DOCUMENT NO. _____

Statement of Evidence:

The northeast corner of Section 4, Township 38, Range 29, 4th Principal Meridian, Benton County, Minnesota, was set under the Public Land Survey as a post with 3 bearing trees, in 1849. No trace of post or trees now exists.

A search by Benton County Highway personnel of available county survey records revealed no additional information on this corner.

On Aug. 17, 1994, Comstock & Davis, Inc. while remonumenting section corners for the purpose of G.P.S. work for Benton County, searched at the position of the northeast corner of Sec. 4, Twp. 38, Rng. 29, at 4.7 feet west of centerline of a County Road and 4 feet north of centerline of a Township Road west and a fence line east and found a spike. Comstock & Davis, Inc. compared the location of the spike to the original US Government Survey and found the position to be within reason of the Public Land Survey records. Comstock & Davis, Inc. accepted the spike position as the northeast corner of Sec. 4. On Sept. 23, 1994, Comstock & Davis, Inc. placed a Benton County cast iron monument at the northeast corner of Sec. 4. Refer to Job No. 945017.

226901

OFFICE OF
BENTON COUNTY RECORDER
BENTON COUNTY, MN
CERTIFIED TO BE FILED
AND FOR RECORDATION

JAN 19 3 05 PM '95

ALICE C. EVANS-MEYER
COUNTY CLERK

BY mm DEPUTY CLERK