

384395

Certified, Filed and or Recorded on
October 18, 2011 2:45 PM

BENTON COUNTY MINNESOTA
MARILYN J NOVAK
COUNTY RECORDER

By: BW

G - V - I

CERTIFICATE OF LOCATION OF GOVERNMENT CORNER

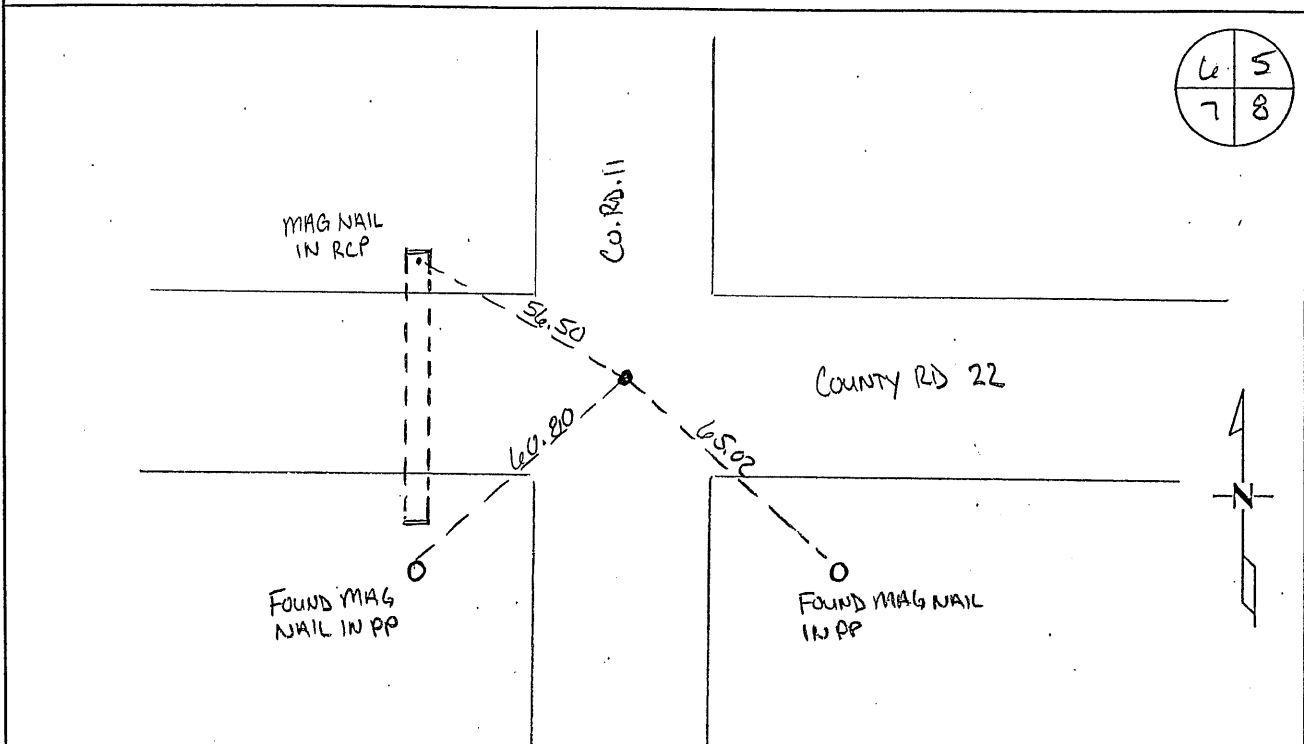
NORTHEAST Corner of Section 7, Township 38, Range 29
4TH Principal Meridian, State of Minnesota, County of Benton

At the corner location shown on the sketch:

On 10/11/2011 found a CAST IRON MONUMENT

left monument as found lowered monument removed monument (explain)

On _____ placed an _____



Statement of evidence for this corner location is on back of this page.

I hereby certify that this document was researched and prepared by me or under my direct supervision and that I am a licensed Land Surveyor under the laws of the State of Minnesota.

Signature Jerome C. Willstach
Benton County Surveyor
License No. 19552

Date: 14 Oct. 2011

Benton County Surveyor's Office
 Jerome C. Wittstock, County Surveyor
 Minnesota License No. 19552
 Page 1 of 2

Statement of Evidence:**B072**

Northeast Corner of Section 7, Township 38 North, Range 29 West, Alberta Township,
 4th Principal Meridian, Benton County, Minnesota.

- 1855 Original US General Land Office survey set a wood post at the location and bearing trees were recorded.
- | | | |
|-------------|----------|----------|
| 7" Tamarack | N 48 ½ W | 26 links |
| 7" Tamarack | S 22 ½ W | 24 links |
- 1930 County Engineer's notebook No. 79 (Elletson) list ties to an iron pipe:
- | | | |
|--------------------|------|-------|
| Cor. F.P. | NW | 30.2' |
| West Mail Box Post | East | 36.8' |
| Cor F. P. | SE | 29.3' |
- 1935 County Engineer's Notebook No. 93 contains survey for Road running from south to north. Notes corner as an iron with town road west and east. Ties:
- | | | |
|---------------|----|------|
| Hub | SW | 43.5 |
| W. Mail Box P | | 37.1 |
- 1939 County Engineer's Notebook No. 128 contains survey of CAR 22 running east to west on section line. Corner is shown as an iron pipe in center of 4-way road intersection. Ties:
- | | | |
|--------------|----|-------|
| E. End Culv. | SE | 40.2' |
| W. End Culv. | SW | 38.4' |
- 1963 Notebook No. 93 notes ties to an iron pipe:
- | | | |
|----|----|-------|
| PP | NW | 46.1 |
| PP | SW | 48.15 |
| TP | NE | 45.5 |
- 1964 County Engineer's Notebook No. 246 contains survey for CSAH 11 running south to north on section line. Notes show corner marked by an iron in center of road with CSAH 22 east and west. Ties are the same as in 1963 and 1967.
- 1964 County Engineer's Notebook No. 276 contains a road survey for CSAH No. 22 running west to east on section line. Same information as above.
- 1967 Milner Carley ties to an iron pipe:
- | | | |
|-----------|----|-------|
| PP | NW | 54.4 |
| Sign Post | NE | 67.85 |
- 1969 County Engineer Kotsmith notes the following reference ties to an iron:
- | | | |
|---------------|----|------|
| W end Culvert | SE | 40.2 |
| W end Culvert | SW | 38.4 |
| Stop Sign | NW | 54.7 |

Benton County Surveyor's Office
 Jerome C. Wittstock, County Surveyor
 Minnesota License No. 19552
 Page 2 of 2

PP SW 67.9

1974 County Surveyor's Record Book 2, page 250, notes the following reference ties to an iron.

Stop Sign	NE	41.7
PP	NW	54.4
PP	SW	54.9

Older ties to a iron pipe:

Cor. FP	NW	30.2
West Mail Box Post	E	36.8
Cor. FP	SE	29.3

1988 William Lunser, LS 9394, found a 1" pin over a 1 1/2" pipe at centerline/centerline. He set a cast iron monument over the 1 1/2" pipe and filed a Certificate of Location (#191251). He notes a distance of 2697.28 feet to the North 1/4 corner Sec 7.

2001 Westwood Professional Services, Inc. found a cast iron monument at centerline/centerline.

2011 The Benton County Surveyor's Office found the cast iron monument, however none of the 1998 ties remained. The CIM measures within 0.2 feet of the 1988 distance to the west. Believing the CIM to be the same as the one set in 1988, and the iron pin over the iron pipe found in 1988 to be the same iron pipe first mentioned in 1930 by Elletson, it is accepted as marking the obliterated corner position.

Coordinates Obtained by GPS
 NAD 83 (1996 Adjustment)
 N-191284.768
 E-515710.379

CERTIFICATE OF LOCATION OF GOVERNMENT CORNER

Northeast Corner of Section 7, Township 38, Range 29, 4th P.M.

STATE OF MINNESOTA, County of Benton

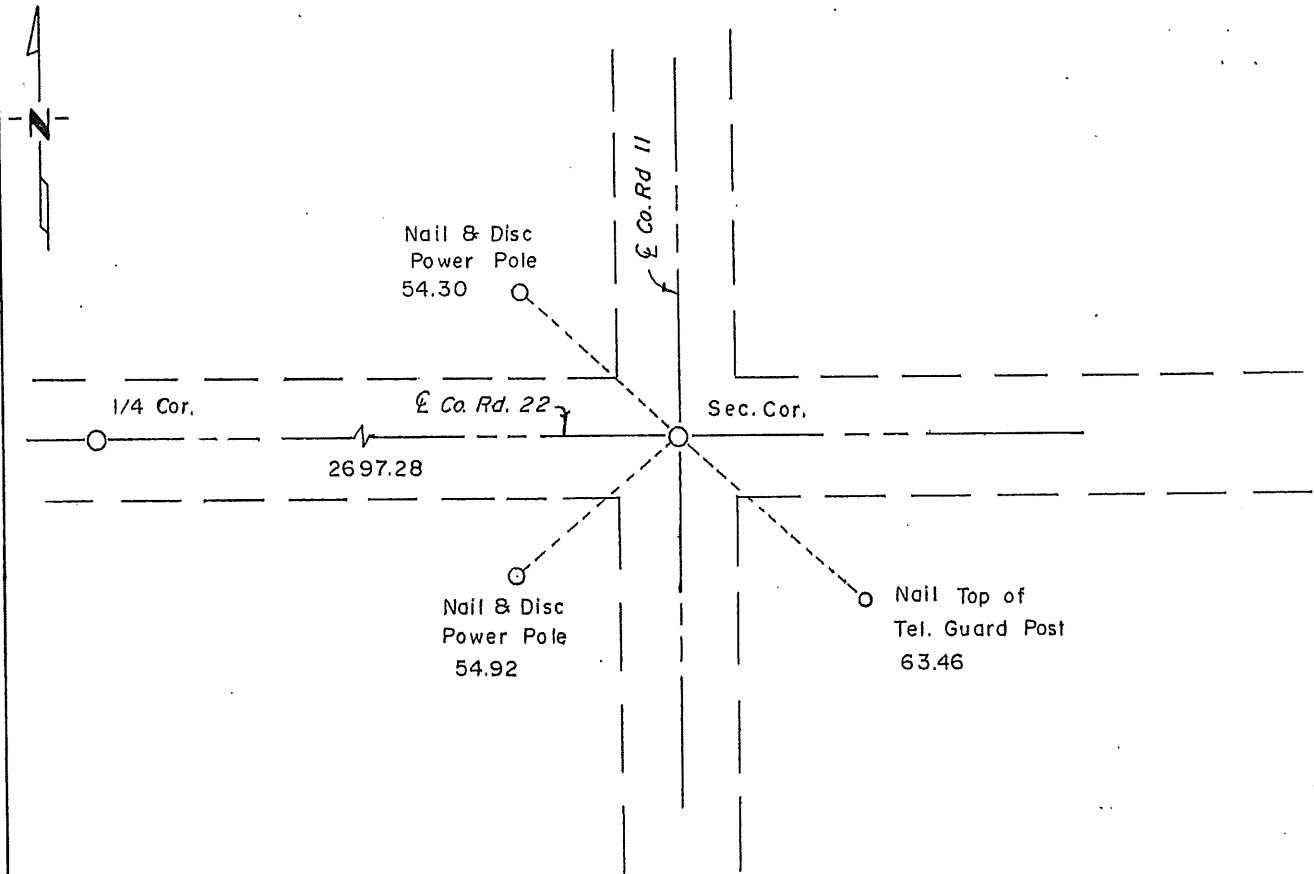
At the corner location shown on the sketch:

On 5-13-88 found a 1" pin and below a 1 1/2" pipe
DATE

left monument as found, lowered monument, removed monument (explain)

On 5-13-88 placed a Benton County Cast Iron Monument on top
DATE of 1 1/2" iron pipe

SKETCH OF REFERENCE TIES



Statement of evidence relative to this corner location is on back of page.

I hereby certify that this document and the data contained herein was prepared by me or under my direct supervision.

William J. Johnson 12/15/88
SIGNATURE DATE

Registration No. 9394

- Land Surveyor, Professional Engineer
- County Surveyor, County Engineer

OFFICE OF THE REGISTER OF DEEDS

County of _____

I hereby certify that this document was filed in the Reg. of Deeds office at _____ .M. on the _____ day of _____ A.D., 19 _____

Register of Deeds _____

By _____, Deputy

DOCUMENT NO. _____

Statement of Evidence:

1963- County road plans show pin was set at center-center of roads and ties taken.

5-13-88 Two ties remained and verified, drove 1½" iron pipe down and placed C.I.M. on top.

191251

OFFICE OF
BENTON COUNTY RECORDER
BENTON COUNTY, MN
CERTIFIED TO BE FILED
AND/OR RECORDED ON

JAN 12 11 59 AM '89

ALICE S. EMBELMEYER
COUNTY RECORDER

BY  DEPUTY