

Certified, Filed and or Recorded on  
Apr. 20, 2010 AT 11:25AM

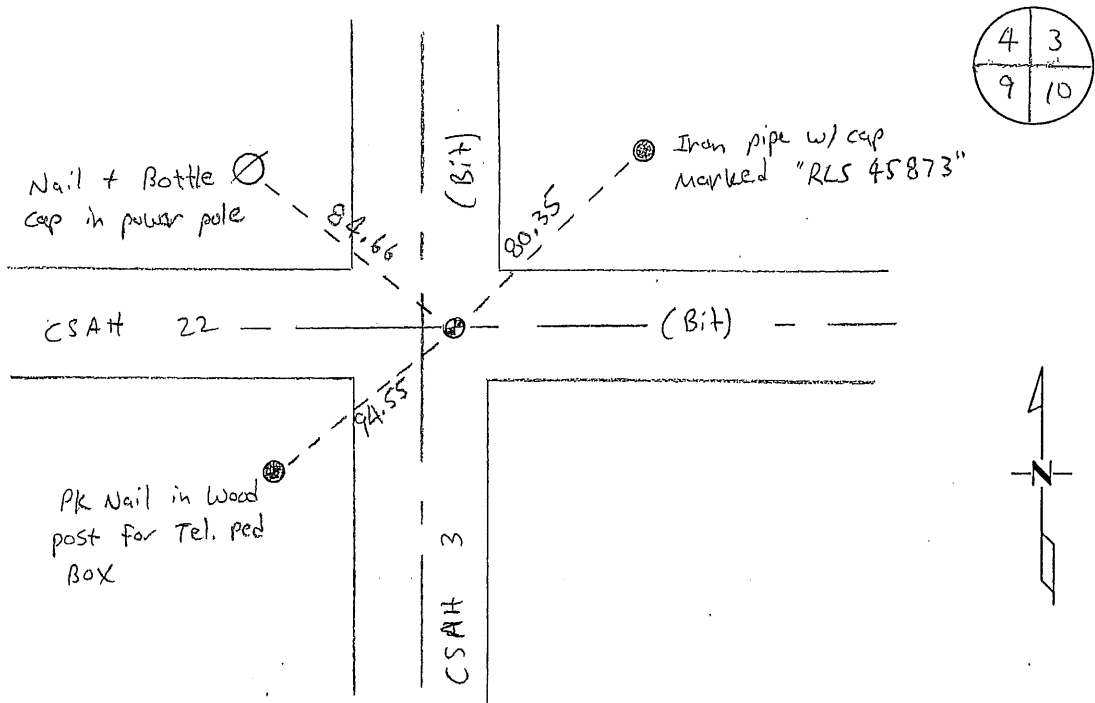
Signed: BW  
MARILYN J NOVAK G V I  
BENTON COUNTY MINNESOTA  
MARILYN J NOVAK  
COUNTY RECORDER

### CERTIFICATE OF LOCATION OF GOVERNMENT CORNER

NE Corner of Section 9, Township 38, Range 29  
4TH Principal Meridian, State of Minnesota, County of Benton

At the corner location shown on the sketch:

- On 4/5/2010 found a Iron pipe w/cap marked "RLS 19552"
- left monument as found       lowered monument       removed monument (explain)
- On \_\_\_\_\_ placed an \_\_\_\_\_



Statement of evidence for this corner location is on back of this page.

I hereby certify that this document was researched and prepared by me or under my direct supervision and that I am a licensed Land Surveyor under the laws of the State of Minnesota.

Signature Jerome C. Wittstock  
Benton County Surveyor  
License No. 19552

Date: 20 April 2010

Benton County Surveyor's Office  
 Jerome C. Wittstock, County Surveyor  
 Minnesota License No. 19552

**Statement of Evidence:****B092**

Northeast Corner of Section 9, Township 38 North, Range 29 West, Alberta Township,  
 4<sup>th</sup> Principal Meridian, Benton County, Minnesota.

1855 Original US General Land Office survey set a wood post at this location and bearing trees were recorded.

13" Aspen	N 3 W	10 links
12" Sugar	S 68 E	? links

1932 County Engineer's Notebook No. 66 contains road survey for SAR 3 running south to north. Notes show corner marked by a large rock set on top of stake with road east and west. Same ties as listed in County Surveyor's Record Book 2, page 244, to a large rock:

TP	SW	36.7
TP	NW	70.0

Stationing gives distances of 2657.8 feet to the East ¼ corner Sec. 9 and 2621.7 feet to the East ¼ corner Sec. 4 with a delta angle of 4-31' left.

1939 County Engineer's Notebook No. 128 contains survey of CAR 22 running east to west on section line. Corner is shown as a rock with stake under in center of 4-way road intersection. Same ties listed in County Surveyor's Record Book 2, page 254, to a rock:

FP	NW	61.7
FP	NE	61.0

Stationing gives distances of 2658.4 feet to the North ¼ corner Sec. 10 and 2670.5 feet to the North ¼ corner Sec. 9.

1951 County Engineer's Notebook No. 190 contains survey of SAR No. 3 running from the south to north. Corner is shown as a hub set in road with CAR No. 22 running east and west. Ties:

4 <sup>th</sup> FP	NW	77.4'
2 <sup>nd</sup> FP	NE	60.9'

Stationing gives distances of 2658.9 feet to the East ¼ corner Sec. 9 and 2624.0 feet to the East ¼ corner Sec. 4 with a delta angle of 4-23' left.

1958 County Engineer's Notebook No. 207 contains a survey for CSAH No. 22 running east from this corner on the section line. Corner is shown as a hub set in center of CSAH No. 3. Ties are the same as listed below in 1969. Stationing gives distance of 2652.0 feet to the North ¼ corner Section 10.

1969 County Surveyor's Record Book 2, page 254, Kotsmith lists the following reference ties to a hub:

PP	NE	55.65
PP	NW	67.0

(Also noted in County Engineer's Notebook No. 276)

Benton County Surveyor's Office  
Jerome C. Wittstock, County Surveyor  
Minnesota License No. 19552

- 1978 Paul Wellen, LS 10461, found a 1/2" I.P. at the centerline of a road ease/west and 4.5 feet east of a north/south centerline. He filed a Certificate of Location (#151868). His notes show a distance of 2659.53 feet south to the East 1/4 corner of Section 9 and a distance of 2651.20 feet east to the North 1/4 corner of Section 10. Ties on Certificate are close to the above 1969 PP ties.

**NOTE: NEED TO CHECK FOR POSSIBLE EXCAVATION FOR CALLED FOR ROCK!**

- 2008 The Benton County Surveyor's Office excavated a 12-foot by 14-foot by 5-foot deep hole centered on a found 1/2-inch iron pipe. No additional corner evidence was found during the excavation. The found iron measures 2 feet long of the 1932 distances north and south and fits the delta angle within 7 minutes. The iron fits the 1939 distance west within a half foot while being 8 feet short of the 1939 distance east. This position also fits the 1951, 1958 and 1978 information extremely well. With the predominance of measured distances fitting this location and since this location fits the centerlines north, south, east and west, a 1/2-inch x 14-inch iron pipe capped 19552 was set in its place to mark the obliterated corner position.

County Coordinates Obtained by GPS  
NAD 83 (1996 Adjustment)  
N-191259.128  
E-526312.082

- 2010 Westwood Professional Services, Inc. found an iron pipe with cap marked "RLS 19552" and established reference ties.

# CERTIFICATE OF LOCATION OF GOVERNMENT CORNER

N. E. \_\_\_\_\_ Corner of Section 9, Township 38, Range 29, \_\_\_\_\_ P.M.

STATE OF MINNESOTA, County of Benton

At the corner location shown on the sketch:

On \_\_\_\_\_ found a \_\_\_\_\_  
DATE

left monument as found,  lowered monument,  removed monument (explain)

On \_\_\_\_\_ placed a \_\_\_\_\_  
DATE

## SKETCH OF REFERENCE TIES



Filed under N. W. Corner Section 10, T 38 R 29

Certificate # 151868

Statement of evidence relative to this corner location is on back of page.

I hereby certify that this document and the data contained herein was prepared by me or under my direct supervision.

\_\_\_\_\_  
SIGNATURE DATE

Registration No. \_\_\_\_\_

Land Surveyor,  Professional Engineer

County Surveyor,  County Engineer

## OFFICE OF THE REGISTER OF DEEDS

County of \_\_\_\_\_

I hereby certify that this document was filed in the Reg. of Deeds office at \_\_\_\_\_ .M. on the \_\_\_\_\_ day of \_\_\_\_\_ A.D., 19 \_\_\_\_\_

Register of Deeds \_\_\_\_\_

By \_\_\_\_\_, Deputy

DOCUMENT NO. \_\_\_\_\_

Should Be North East Corner Section 9, T38, R29 Index No. \_\_\_\_\_

# CERTIFICATE OF LOCATION OF GOVERNMENT CO

I did sat the North <sup>west</sup> Corner of Section 10, Township 38, Range 29

STATE OF MINNESOTA, County of Benton

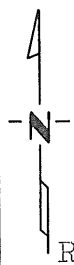
At the corner location shown on the sketch: by a 1/2" iron pipe, on the c\_\_\_\_\_ of east-west County Road No. 22 and 4.5 feet east of the center \_\_\_\_\_ north-south County Road No. 3

On \_\_\_\_\_ found a \_\_\_\_\_  
DATE

left monument as found,  lowered monument,  removed monument

On 10-17-78 placed a permanent marker consisting ~~of~~ of a \_\_\_\_\_  
DATE pipe

## SKETCH OF REFERENCE TIES



Refer to next page

Statement of evidence relative to this corner location is on back of page.

I hereby certify that this document and the data contained herein was prepared by me or under my direct supervision.

Paul E. Wellen  
\_\_\_\_\_  
SIGNATURE DATE

Registration No. 10461  
 Land Surveyor,  Professional Engineer  
 County Surveyor,  County Engineer

County Recorder \_\_\_\_\_  
OFFICE OF THE REGISTER OF DEEDS  
County of Benton

I hereby certify that this document the Reg. of Deeds office at 10 A \_\_\_\_\_  
26 day of March

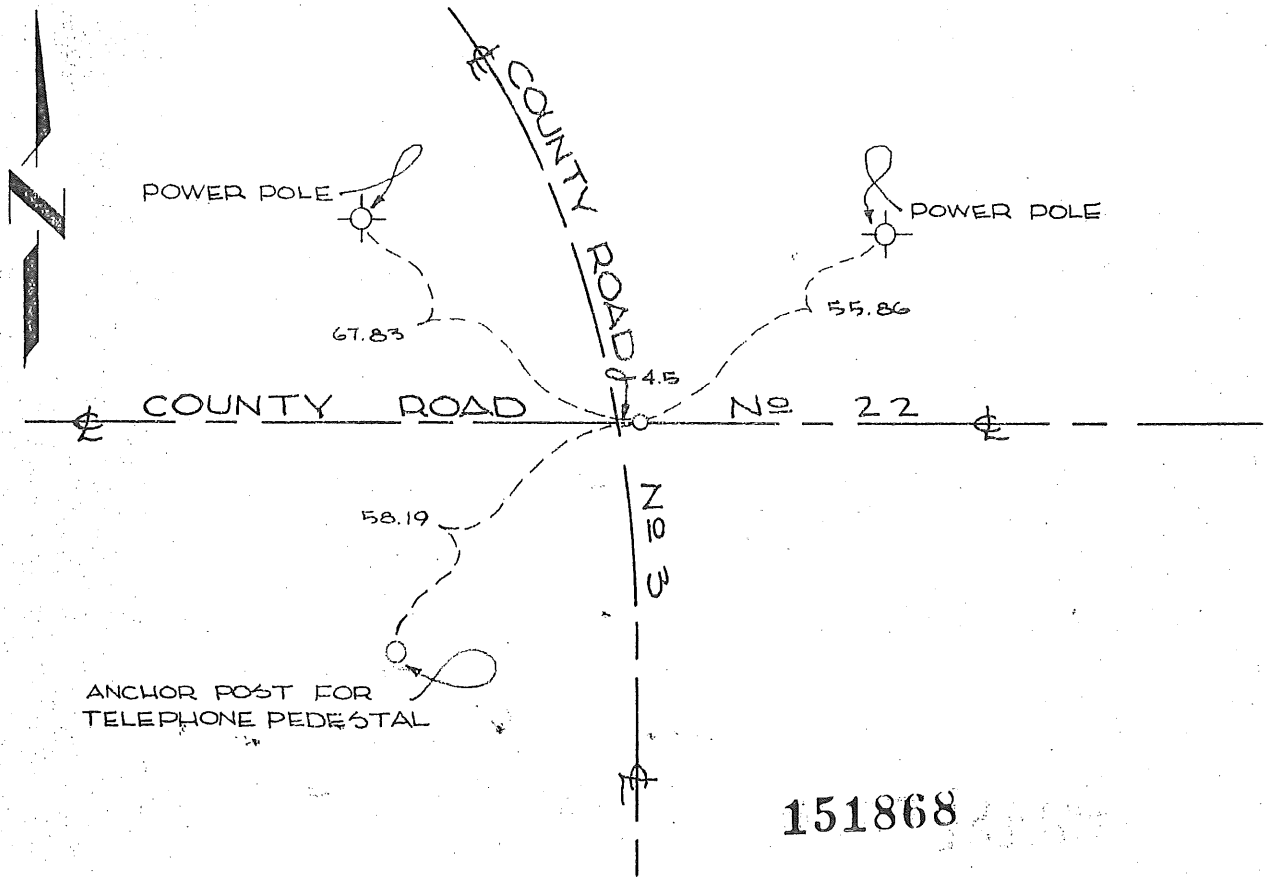
Register of Deeds F. A. Johnson  
By \_\_\_\_\_

DOCUMENT NO. 151868

# CERTIFICATE OF LOCATION OF GOVERNMENT CORNER

I hereby certify that on the 17 day of October, 1978  
I did set the Northwest corner of Section 10,  
Twp. 38, Rg. 29, Benton County, Minnesota, which  
was evidenced by a 1/2" iron pipe, on the center line of east-west  
County Road No. 22, and 4.5 feet east of the center line of north-south  
County Road No. 3.

I further certify that in order to perpetuate said corner I did  
at the exact location thereof place a permanent marker consisting  
of a 1/2" iron pipe and that  
I did establish witness or reference monuments as shown below:



I hereby certify that the above  
is true and correct and that I am  
a registered Land Surveyor under  
the laws of the State of Minnesota.

Doug Miller  
Minn. Registration No. 10461

Office of the County Recorder,  
Benton County, Minn.

I hereby certify that the within instrument  
was filed for record in this office on the  
16th day of March, 1979  
at 10 A.M.

F.A. Johnson  
County Recorder  
By \_\_\_\_\_ Deputy.