

409195

Certified, Filed and or Recorded on
April 29, 2015 2:20 PM

BENTON COUNTY MINNESOTA
MARILYN J NOVAK
COUNTY RECORDER

By: CK

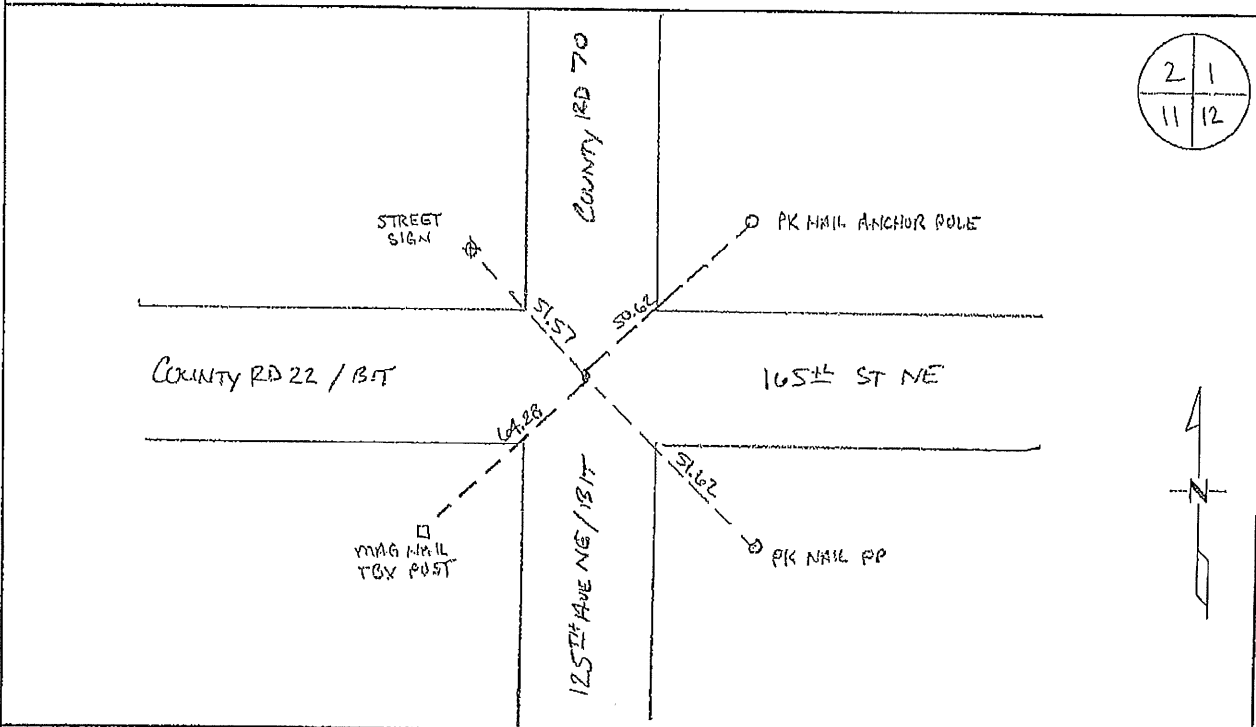
G - V - 1

CERTIFICATE OF LOCATION OF GOVERNMENT CORNER

NORTHEAST Corner of Section 11, Township 38, Range 29
4TH Principal Meridian, State of Minnesota, County of Benton

At the corner location shown on the sketch:

- On 03/25/15 found a 1/2" IRON PIPE WITH ILLEGIBLE CAP
- left monument as found lowered monument removed monument (explain)
- On _____ placed an _____



Statement of evidence for this corner location is on back of this page.

I hereby certify that this survey, plan, or report was prepared by me or under my direct supervision and that I am a duly Licensed Land Surveyor under the laws of the state of Minnesota.

Signature Jerome C Wittstock
Jerome C. Wittstock, PS, CFedS, Benton County Surveyor
License No. 19552

Date: 4/29/2015

Benton County Surveyor's Office
 Jerome C. Wittstock, County Surveyor
 Minnesota License No. 19552

Statement of Evidence:**B112**

Northeast Corner of Section 11, Township 38 North, Range 29 West, Alberta Township, 4th
 Principal Meridian, Benton County, Minnesota.

- 1855 Original US General Land Office survey set a wood post at this location and bearing trees were recorded.
- | | | |
|-------------|--------|---------|
| 9" Tamarack | S 55 W | 6 links |
| 7" Tamarack | N 62 E | 3 links |
- 1916 Surveyor's Report to Alberta Township Board of Supervisors by J. P. Soderstrum concerning laying out of town road between Sections 1 and 2: Shows he found the Government witness stump, verified by Frank Ratke, who moved into the area in 1880 and was pointed out to him. He placed a 5"x5"x24" granite stone at the corner as called for in the Government notes.
- Undated County Surveyor's Record Book 2, page 258 (from County Highway) note the following reference ties to a granite monument.
- | | | |
|----|----|-------|
| PP | SE | 41.8 |
| TP | SW | 38.25 |
- 1939 County Engineer's Notebook No. 128 contains survey of CAR 22 running east to west on section line. Corner is shown as a granite monument in center of 4-way road intersection. Ties:
- | | | |
|----------|----|-------|
| 10" Pop. | SE | 54.2' |
| TP | SW | 41.1' |
- 1937 County Surveyor's Record Book 2, pages 238 & 240, H. G. Elletson notes a granite monument with the following reference ties.
- | | | |
|------------------|----|------|
| 10" Poplar stump | SE | 46.2 |
| TP | SW | 43.5 |
- 1944 County Engineer's Notebook No. 157 contains road survey for CAR No. 43 running north to south along the section line. Corner is shown as a granite monument in center of 4-way road intersection.
- 1947 H. G. Elletson notes a granite monument with the following reference ties.
- | | | |
|------------|----|------|
| 10" Poplar | SE | 54.2 |
| TP | SW | 41.1 |
- 1958 County Engineer's Notebook No. 207 contains a survey for CSAH No. 22 running west to east and ending at this corner. Corner is shown as a PI set in center of road with county roads running north-south. 1961 ties to 4" post:
- | | | |
|--------------|----|-------|
| W. End Culv. | SW | 59.5 |
| PP | SE | 41.45 |
| Cor FP | NE | 48.9 |
- 1963 County Engineer's Notebook No. 249 contains a survey for CSAH No. 22 running east from this corner. Notes show post in 4-way road intersection with same ties as listed in 1958 and 1967.
- 1967 County Surveyor's Record Book 2, pages 238 & 240 give the following reference ties to a 4" post:
- | | | |
|---------------|----|-------|
| Sign Post | NE | 59.25 |
| E end Culvert | SE | 58.3 |
| W end Culvert | SW | 58.4 |
| PP | SE | 41.8 |
- 1985 David Regan, LS 12236, found a 1/2" steel rod in the centerline of roads north/south/east/west. He replaced it with a cast iron monument and filed a Certificate of Location (#176055).
- 2001 Westwood Professional Services, Inc. found a cast iron monument at the centerline of roads north/south/east/west.
- 2007 The Benton County Surveyor's Office excavated a 10' by 12' hole to original soil. The stone set in 1916 was not found, but the stump of the original 9" Tamarack S55W 6 links was found and fit the position of the CIM. The found cast iron monument fits the 1944 distance south within a foot. The CIM is accepted as marking the obliterated corner position and a 1/2" iron pipe capped 19552 was set to mark the corner position.
- Coordinates Obtained by GPS
 NAD 83 (1996 Adjustment)
 N-190958.190
 E-536772.553
- 2015 The Benton County Surveyor's Office found the iron pipe set in 2007 and verified the 2007 coordinates.

CERTIFICATE OF LOCATION OF GOVERNMENT CORNER

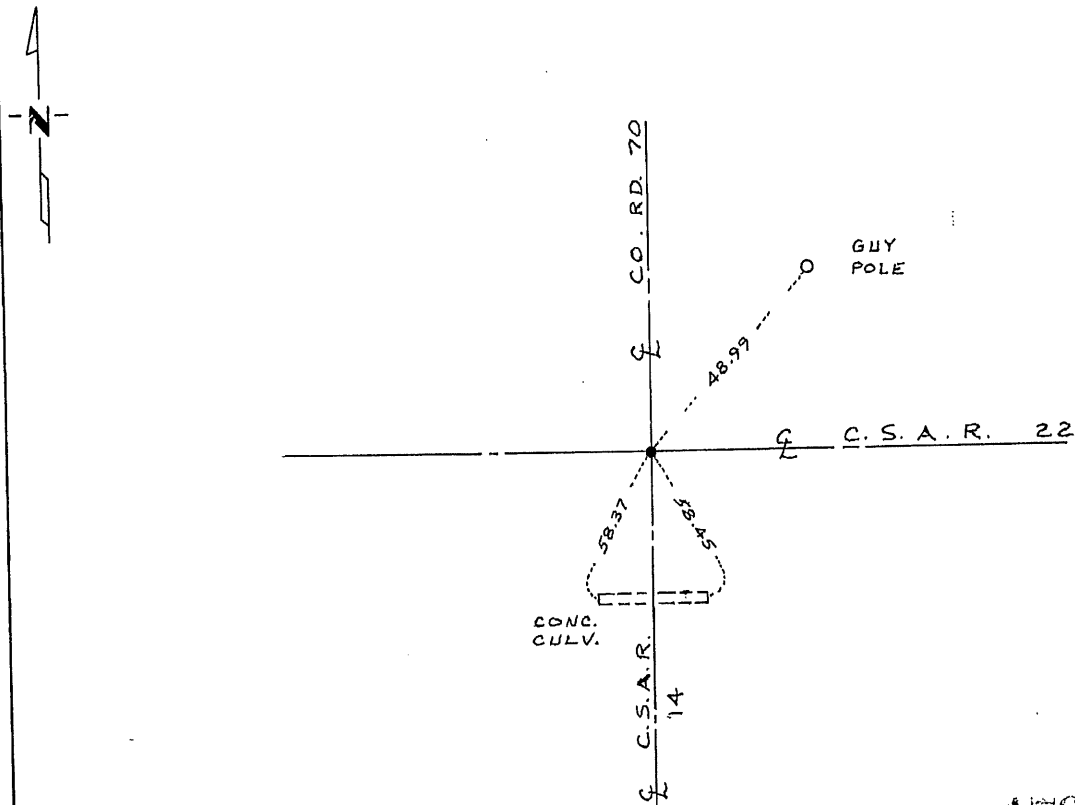
Northeast Corner of Section 11, Township 38, Range 29, 4th P.M.

STATE OF MINNESOTA, County of Benton

At the corner location shown on the sketch:

- On 5/2/85 found a 1/2 inch steel rod in centerline County Roads north-south and east-west
 - left monument as found, lowered monument, removed monument (explain)
- On 5/2/85 placed a Benton County cast iron monument

SKETCH OF REFERENCE TIES



176055

Statement of evidence relative to this corner location is on back of page.

I hereby certify that this document and the data contained herein was prepared by me or under my direct supervision.

David J. Regan 12/13/85
SIGNATURE DATE

Registration No. 12236

- Land Surveyor, Professional Engineer
- County Surveyor, County Engineer

County Recorder
OFFICE OF THE REGISTER OF DEEDS
County of Benton

I hereby certify that this document was filed in the ^{County Recorder} Reg. of Deeds office at 1 P.M. on the 1 day of January A.D., 1986

County Recorder
Register of Deeds Alice C. Engelmeier

By [Signature], Deputy

DOCUMENT NO. _____