

409200

Certified, Filed and or Recorded on
April 29, 2015 2:20 PM

BENTON COUNTY MINNESOTA
MARILYN J NOVAK
COUNTY RECORDER

By: OK

6--V--I

CERTIFICATE OF LOCATION OF GOVERNMENT CORNER

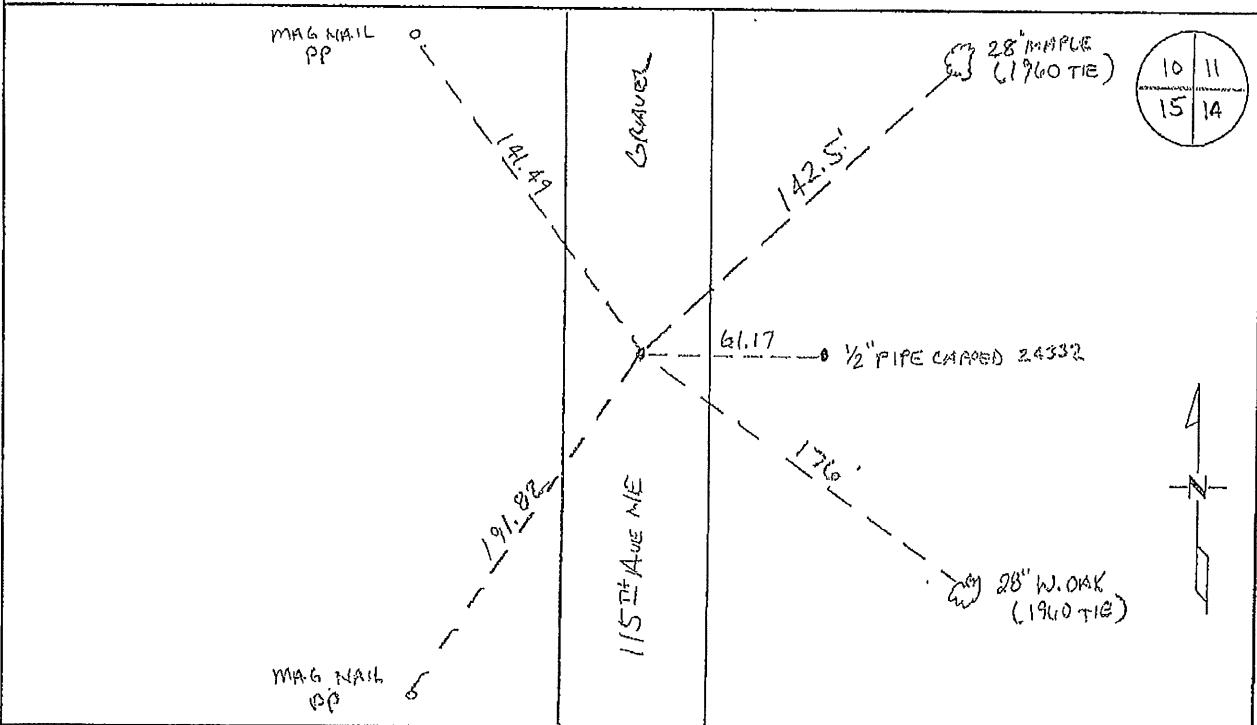
NORTHEAST Corner of Section 15, Township 38, Range 29
4TH Principal Meridian, State of Minnesota, County of Benton

At the corner location shown on the sketch:

On 03/25/2015 found a 1/4" PIPE BURIED 2FT

left monument as found lowered monument removed monument (explain)

On 03/25/15 placed an 1/2" X 1/4" IRON PIPE CAPPED LS 19552 OVER
FOUND 1/4" PIPE



Statement of evidence for this corner location is on back of this page.

I hereby certify that this survey, plan, or report was prepared by me or under my direct supervision and that I am a duly Licensed Land Surveyor under the laws of the state of Minnesota.

Signature Jerome C. Wittstock
Jerome C. Wittstock, PS, CFedS, Benton County Surveyor
License No. 19552

Date: 4/29/2015

Benton County Surveyor's Office
 Jerome C. Wittstock, County Surveyor
 Minnesota License No. 19552

Statement of Evidence:**B152**

Northeast Corner of Section 15, Township 38 North, Range 29 West, Alberta Township,
 4th Principal Meridian, Benton County, Minnesota.

- 1855 Original US General Land Office survey set a wood post at this location and bearing trees were recorded.
- | | | |
|-------------|--------|---------|
| 8" Spruce | N 43 E | 4 links |
| 6" Tamarack | S 31 W | 7 links |
- 1907 County Road Book, pages 4-6, contains a road survey by Felix Parent, County Surveyor, for State Road. Survey shows corner found "drove 1 1/4" x 16" gas pipe in place of old post". Road runs north-south.
- 1912 County Surveyor's Record Book 2, page 231, notes the following reference ties to an I.M. in the center of a grade:
- | | | |
|----------|--------|------------|
| 10" Pine | N 56 E | 151.3 feet |
| Fen Cor | E | 33 feet |
- 1960 County Surveyors Record Book 2, page 266, notes the following reference ties to an iron:
- | | | |
|-----------|----|------------|
| 8" Maple | NE | 143.0 feet |
| 12" W Oak | SE | 176.2 feet |
| PP | W | 46.2 feet |
- 1978 Paul Wellen, LS 10461, found a 1/2" I.P. at the centerline of roads north/south and a fence line east. He replaced it with a 1/2" I.P. and filed a Certificate of Location (Doc. No. 151870). His notes give a measurement of 2656.57 feet to the East 1/4 corner of Section 10.
- Coordinates Obtained by GPS (Found 1/2" iron pipe) (Do not use)
 NAD 83 (1996 Adjustment)
 N- 185782.983
 E- 531719.553
- 2012 The Benton County Surveyor's Office found the 1/2" iron pipe and possible stump of 1912 10" Pine, along with the 1960 Maple and White Oak (snag) trees. The position from the 1912 stump, by bearing and distance, falls 5.5 feet north of the found iron pipe. Further examination at the intersection of distances from the two found 1960 BTs yielded finding the 1907 1 1/4" iron pipe down 3 feet. The found iron was removed to check for further evidence below, but no additional evidence was found. The 1907 1 1/4" iron measures North 58 degrees 04 minutes 20 seconds West, 3.60 feet from the 1978 1/2" iron pipe and is accepted as marking the obliterated corner position.
- Coordinates Obtained by GPS
 NAD 83 (1996 Adjustment) (Use)
 N- 185784.886
 E- 531716.499
- 2015 The Benton County Surveyor's Office verified the 1 1/4" iron pipe and BT evidence still remained along with the 2012 coordinates.

CERTIFICATE OF LOCATION OF GOVERNMENT CORNER

N. E. _____ Corner of Section 15, Township 38, Range 29, _____ P.M.

STATE OF MINNESOTA, County of Benton

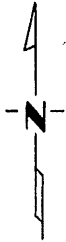
At the corner location shown on the sketch:

On _____ found a _____
DATE

left monument as found, lowered monument, removed monument (explain)

On _____ placed a _____
DATE

SKETCH OF REFERENCE TIES



Filed under S. E. Corner Section 10, T38 R 29

Certificate # 151870

Statement of evidence relative to this corner location is on back of page.

I hereby certify that this document and the data contained herein was prepared by me or under my direct supervision.

SIGNATURE DATE

Registration No. _____

Land Surveyor, Professional Engineer

County Surveyor, County Engineer

OFFICE OF THE REGISTER OF DEEDS

County of _____

I hereby certify that this document was filed in the Reg. of Deeds office at _____ .M. on the _____ day of _____ A.D., 19 _____

Register of Deeds _____

By _____, Deputy

DOCUMENT NO. _____

Should BE N.E. corner Section 15, T 38 R 29
Index No. _____

CERTIFICATE OF LOCATION OF GOVERNMENT CORNER

I did set the Southeast Corner of Section 10, Township 38, Range 29, 4 P.M.

STATE OF MINNESOTA, County of Benton

At the corner location shown on the sketch:

- On 10-17-78 found a 1/2" iron pipe on the center line of north-south County Road No. 65 and on east fence line
 left monument as found, lowered monument, removed monument (explain)
- On _____ placed a 1/2" iron pipe
DATE

SKETCH OF REFERENCE TIES



Refer to next page

Statement of evidence relative to this corner location is on back of page.

I hereby certify that this document and the data contained herein was prepared by me or under my direct supervision.

Paul E. Wellen
SIGNATURE DATE

Registration No. 10461
 Land Surveyor, Professional Engineer
 County Surveyor, County Engineer

County Recorder
~~REGISTER OF DEEDS~~
OFFICE OF THE REGISTER OF DEEDS
County of Benton

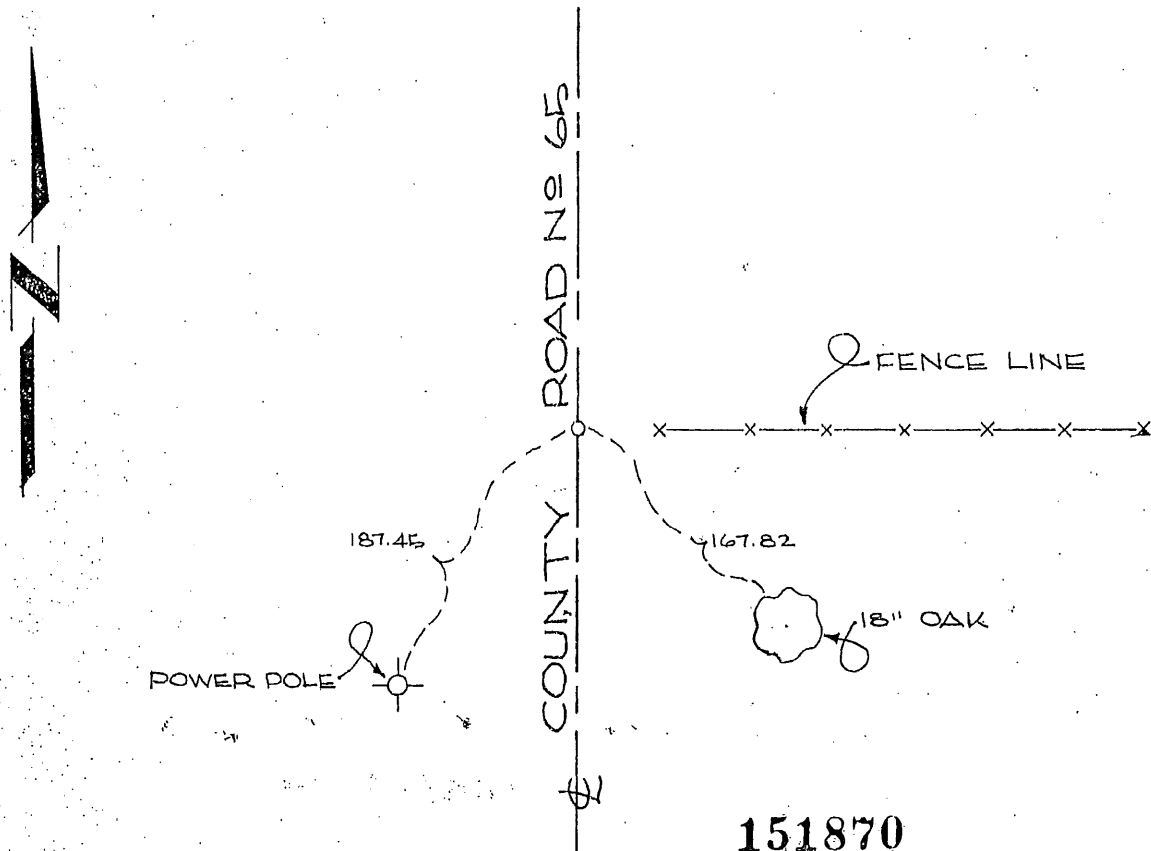
I hereby certify that this document was filed in the Reg. of Deeds office at 10 A.M. on the 26 day of March A.D., 19 79

Register of Deeds T.A. Johnson
By _____, Deputy
DOCUMENT NO. 151870

CERTIFICATE OF LOCATION OF GOVERNMENT CORNER

I hereby certify that on the 17 day of October, 19 78
I did set the Southeast corner of Section 10,
Twp. 38, Rg. 29, Benton County, Minnesota, which
was evidenced by a 1/2" iron pipe, on the center line of north-south
County Road No. 65, and on east fence line.

I further certify that in order to perpetuate said corner I did
at the exact location thereof place a permanent marker consisting
a 1/2" iron pipe and that
establish witness or reference monuments as shown below:



151870

I hereby certify that the above
is true and correct and that I am
a registered Land Surveyor under
the laws of the State of Minnesota.

Darryl Miller

Minn. Registration No. 10461

Office of the County Recorder,
Benton County, Minn.

I hereby certify that the within instrument
was filed for record in this office on the
26 day of March, 19 79
at 10 a.m.

F.A. Johnson
County Recorder

By _____ Deputy.