

Certified, Filed and or Recorded on
Nov. 04, 2008 AT 12:28PM

Signed: BW
MARILYN J NOVAK G V I
BENTON COUNTY MINNESOTA
MARILYN J NOVAK

COUNTY RECORDER

CERTIFICATE OF LOCATION OF GOVERNMENT CORNER

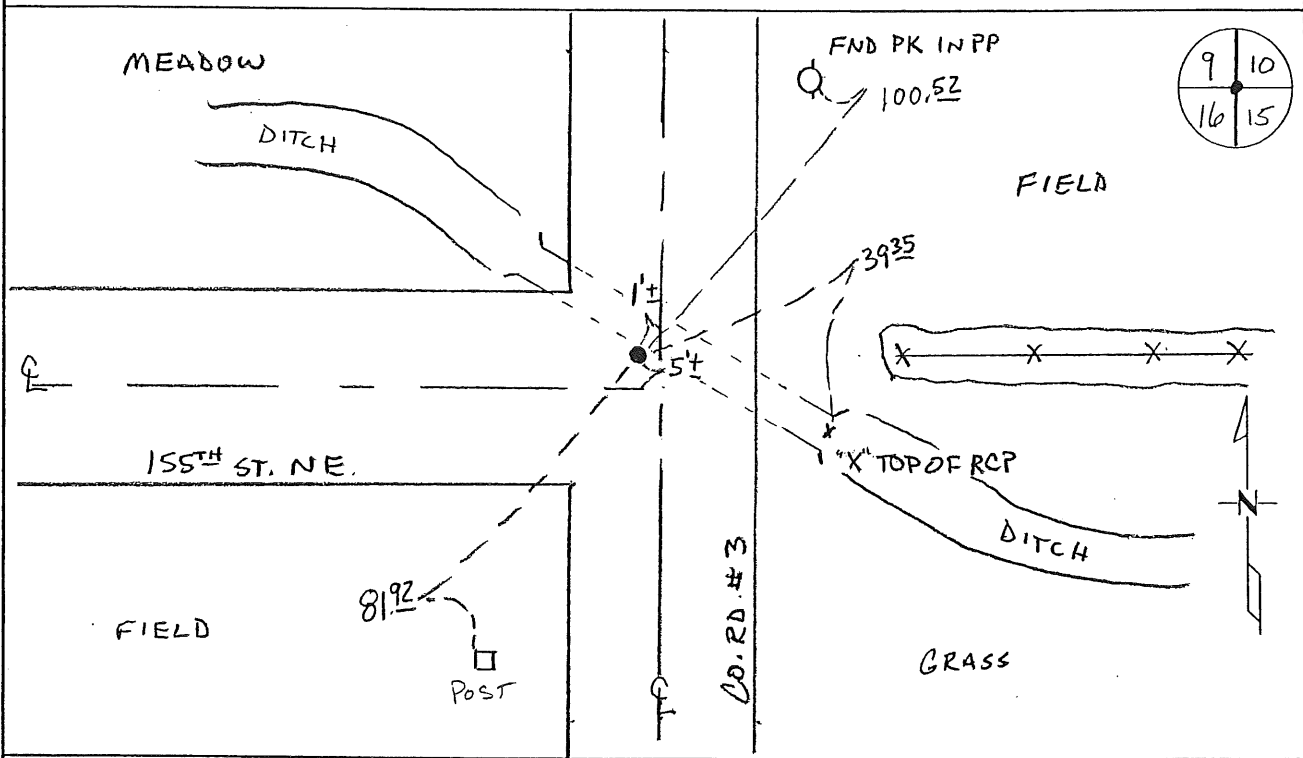
NORTHEAST Corner of Section 16, Township 38, Range 29
4TH Principal Meridian, State of Minnesota, County of Benton

At the corner location shown on the sketch:

On 10-28-08 found a 1/2" OPEN IRON PIPE

left monument as found lowered monument removed monument (explain)

On _____ placed an _____



Statement of evidence for this corner location is on back of this page.

I hereby certify that this document was researched and prepared by me or under my direct supervision and that I am a licensed Land Surveyor under the laws of the State of Minnesota.

Signature [Handwritten Signature]
Deputy County Surveyor
License No. 43932

Date: 11/3/08

Statement of Evidence:

B162

Northeast Corner of Section 16, Township 38 North, Range 29 West, Alberta Township,
4th Principal Meridian, Benton County, Minnesota.

1855 Original US General Land Office survey set a wood post at this location and bearing trees were recorded.

8" Tamarack	N 35 E	144 links
6" Tamarack	N 25 W	198 links

1912 County Surveyor's Record Book 2, page 254, notes new bearing tie:

6" Stone	N 38 W	116 links
----------	--------	-----------

(bottle under a stone)

NOTE: Believe this is wrong township!

1932 County Engineer's Notebook No. 66 contains road survey for SAR 3 running south to north. Notes show corner marked by a hub with fence line east and road west. Ties:

TP	SW	35.0'
Cor. FP	NW	34.9'

Same ties listed in County Surveyor's Record Book 2, page 268.

1951 County Engineer's Notebook No. 190 contains survey of SAR No. 3 running from the south to north. Corner is shown as a hub in road with town road running west 9 feet south and on fence line running east. Ties:

4 th FP	E	61.9'
TP	SW	45.8'

Same ties listed in County Surveyor's Record Book 2, page 268.

1978 Paul Wellen, LS 10461, found a 1/2" iron pipe at the centerline of roads north/south/west and a fence line east. He replaced it with a 1/2" iron pipe and filed a Certificate of Location (#151867). His notes give measurement of 2694.85 feet to the East 1/4 corner of Sec. 9.

2008 Westwood Professional Services, Inc. found 1/2" iron pipe near intersection of roads north/south/west and on line with fence to east. Measured 2694.68 to E1/4 corner of Section 9 and found one of Wellens 1978 ties. 1/2" iron pipe is accepted as marking the obliterated position for this corner.

Coordinates Obtained by GPS

NAD 83 (1996 Adjustment)

N-185904.898

E-526336.311

CERTIFICATE OF LOCATION OF GOVERNMENT CORNER

N. E. _____ Corner of Section 16, Township 38, Range 29, _____ P.M.

STATE OF MINNESOTA, County of Benton

At the corner location shown on the sketch:

On _____ found a _____
DATE

left monument as found, lowered monument, removed monument (explain)

On _____ placed a _____
DATE

SKETCH OF REFERENCE TIES



Filed under S. W. Corner Section 10, T38 R 29

Certificate #151867

Statement of evidence relative to this corner location is on back of page.

I hereby certify that this document and the data contained herein was prepared by me or under my direct supervision.

SIGNATURE DATE

Registration No. _____

- Land Surveyor, Professional Engineer
- County Surveyor, County Engineer

OFFICE OF THE REGISTER OF DEEDS

County of _____

I hereby certify that this document was filed in the Reg. of Deeds office at _____ .M. on the _____ day of _____ A.D., 19 ____

Register of Deeds _____

By _____, Deputy

DOCUMENT NO. _____

CERTIFICATE OF LOCATION OF GOVERNMENT CORNER

I did set the ~~Government~~ Corner of Section 16, Township 38, Range 29, 4 P.M.

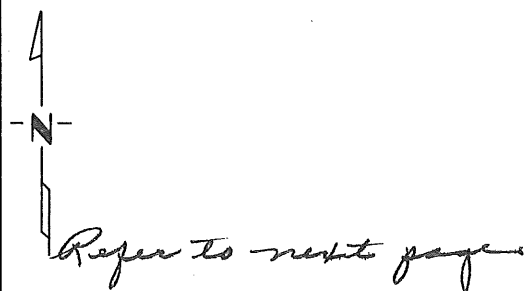
STATE OF MINNESOTA, County of Benton

At the corner location shown on the sketch:

On 10-17-78 found a 1/2" iron pipe on the center line of north-South County ^{DATE}Road No. 3 on the center line of west twp. road & on east fence line left monument as found, lowered monument, removed monument (explain)

On _____ placed a permanent marker consisting of a 1/2" iron pipe
_{DATE}

SKETCH OF REFERENCE TIES



Statement of evidence relative to this corner location is on back of page.

I hereby certify that this document and the data contained herein was prepared by me or under my direct supervision.

Paul E. Kellen
SIGNATURE DATE

Registration No. 10461

Land Surveyor, Professional Engineer

County Surveyor, County Engineer

County Recorder
OFFICE OF THE REGISTER OF DEEDS
County of Benton

I hereby certify that this document was filed in the Reg. of Deeds office at 10 9 .M. on the 26th day of March A.D., 1977

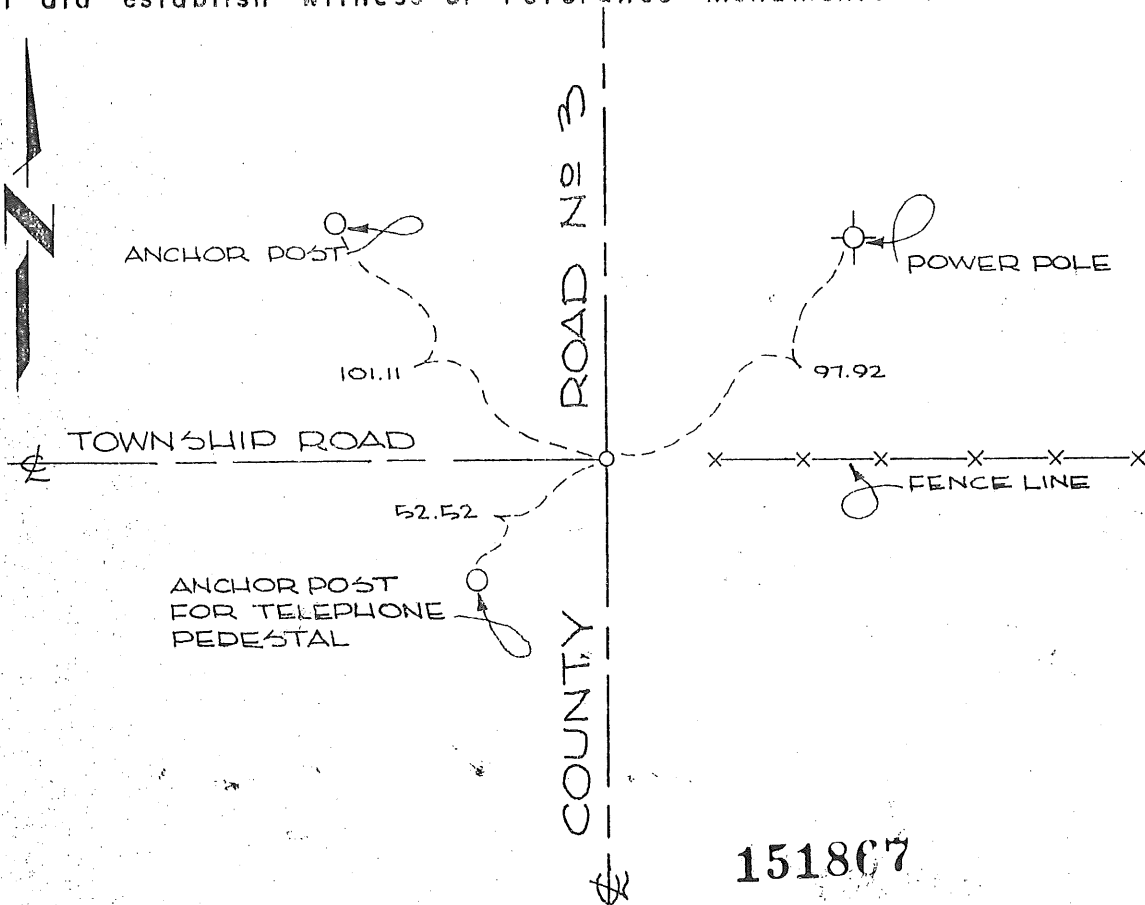
Register of Deeds F.A. Johnson
By _____, Deputy

DOCUMENT NO. 151867

CERTIFICATE OF LOCATION OF GOVERNMENT CORNER

I hereby certify that on the 17 day of October, 19 78
 I did set the Southwest corner of Section 10,
 Twp. 38, Rg. 29, Benton County, Minnesota, which
 was evidenced by a 1/2" iron pipe, on the center line of north-south
County Road No. 3, on the center line of west township road, and on east
fence line.

I further certify that in order to perpetuate said corner I did
 at the exact location thereof place a permanent marker consisting
 of a 1/2" iron pipe and that
 I did establish witness or reference monuments as shown below:



I hereby certify that the above
 is true and correct and that I am
 a registered Land Surveyor under
 the laws of the State of Minnesota.

Samuel Miller

Minn. Registration No. 10461

Office of the County Recorder,
Benton County, Minn.

I hereby certify that the within instrument
 was filed for record in this office on the
26th day of March, 1979.
 at 10 a.m.

F.A. Johnson
 County Recorder

By _____ Deputy.