

405886

Certified, Filed and or Recorded on
October 08, 2014 8:22 AM

BENTON COUNTY MINNESOTA
MARILYN J NOVAK
COUNTY RECORDER

By: CK

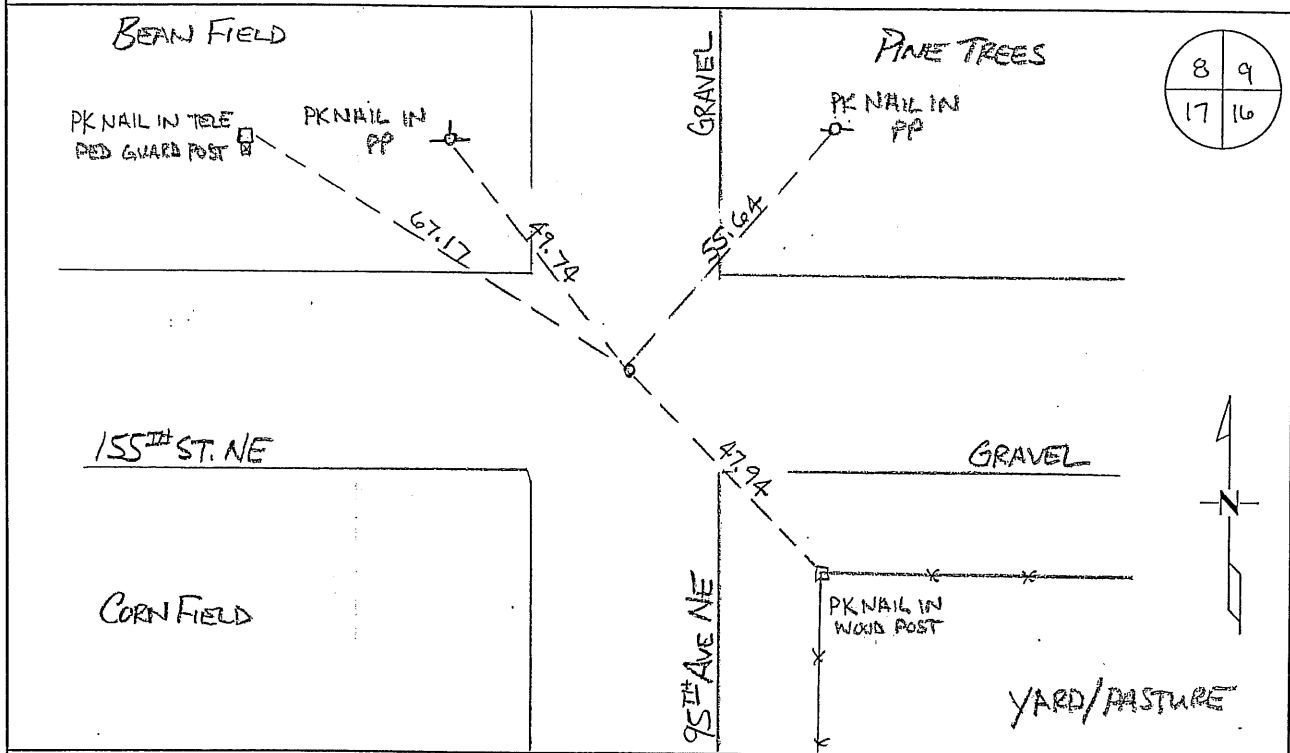
G - V - I

CERTIFICATE OF LOCATION OF GOVERNMENT CORNER

NORTHEAST Corner of Section 17, Township 38, Range 29
4TH Principal Meridian, State of Minnesota, County of Benton

At the corner location shown on the sketch:

- On _____ found a _____
- left monument as found lowered monument removed monument (explain)
- On 07/29/09 placed an 1/2" IRON PIPE RLS # 19552 0.5' FT BELOW ROAD SURFACE IN ALICE OF FOUND SPIKE



Statement of evidence for this corner location is on back of this page.

I hereby certify that this document was researched and prepared by me or under my direct supervision and that I am a licensed Land Surveyor under the laws of the State of Minnesota.

Signature Jerome C. Wittstock
Benton County Surveyor
License No. 19552

Date: 07 October 2014

Benton County Surveyor's Office
 Jerome C. Wittstock, County Surveyor
 Minnesota License No. 19552

Statement of Evidence:**B172**

Northeast Corner of Section 17, Township 38 North, Range 29 West, Alberta Township,
 4th Principal Meridian, Benton County, Minnesota.

1855 Original US General Land Office survey set a wood post at the location and bearing trees were recorded.

8" Birch	N 36 ½ E	7 links
9" Birch	S 40 ½ E	13 links

1915 County Surveyor's Record Book 2, page 270, and Record Book A, Map No. 14, shows a survey of town road between Sections 16 and 17 by J.P. Soderstrum. He notes he found a stake set by Parent in 1905. The found stake is 102 links north of a stake set by Parent in a previous survey. He found a line of blazes to the west of original stake and 2 Birch stumps checking OK with Gov't BTs. They were the only Birch stumps in the area and must be original trees. He set oak stake with ties:

8" Poplar	NW	100 links
8" Br Oak	SW	132 links
9" Br Oak	SW	176 links
7" Elm	SE	192 links

He measured south 41.17 chains (2717.22 feet) to the East ¼ corner of Section 17 and 84.08 chains (5549.28 feet) to the SE corner of Section 17.

2001 Westwood Professional Services, Inc. found a nail at the approximate corner in the centerline of road intersection with roads north/south and east/west. Measured 2712.92 feet to approximate East ¼ corner and 5541.92 feet to the SE corner of Section 17.

County Coordinates Obtained by GPS (Nail)
 NAD 83 (1996 Adjustment)
 N-185885.729
 E-521085.219

2009 The Benton County Surveyor's Office found the nail indicated in 2001. Measurements south for a half and full mile fit proportionally within a foot and a half at the half mile of the 1915 distance. Since the found nail falls at lines of longstanding occupation and fits the 1915 distances well proportionally, a 1/2" by 14" iron pipe capped 19552 was set in place of the found spike.

2014 The Benton County Surveyor's Office verified the iron pipe set in 2009.