

Office of the County Recorder, BENTON County, Minnesota
I hereby certify that the within instrument was filed for record in this office on the
_____ day of _____, 200____.

COUNTY RECORDER _____

By _____ Deputy.

CERTIFICATE OF LOCATION OF GOVERNMENT CORNER

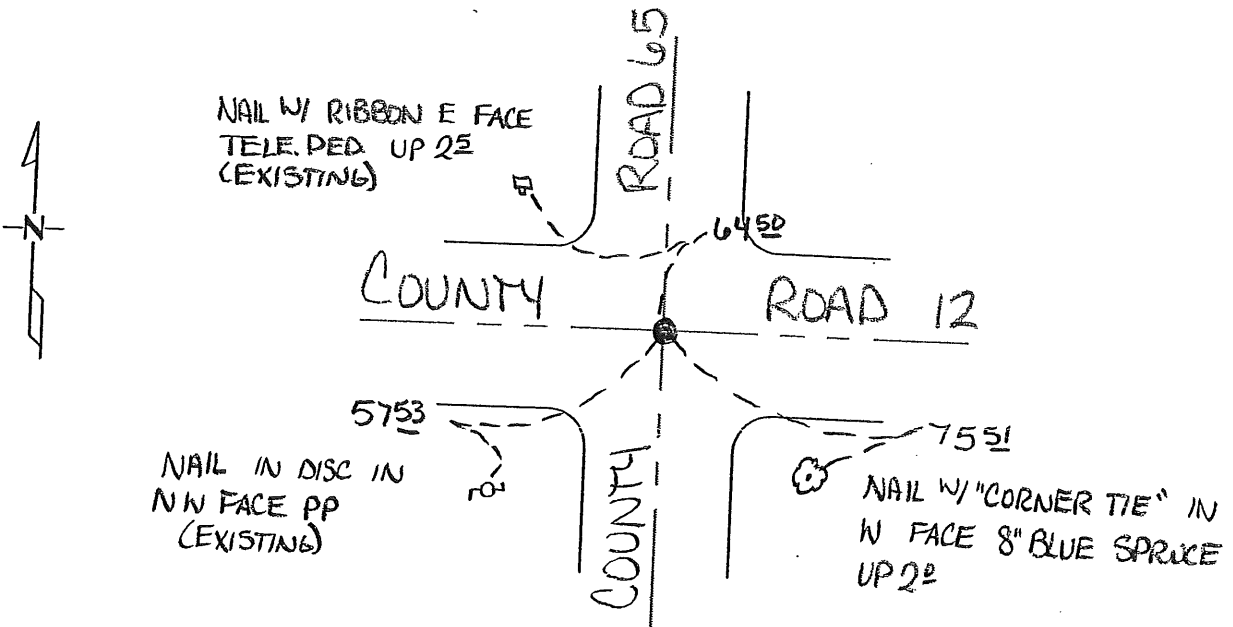
Northeast Corner of Section 22, Township 38, Range 29
4TH Principal Meridian, State of Minnesota, County of BENTON

At the corner location shown on the sketch:

On 08/04/01 found a 1" X 3" Rectangular Bar down 18"
DATE

left monument as found lowered monument removed monument (explain)

On 12/19/01 placed a Cast Iron Monument over the Rectangular Bar
DATE



Ref. Job # _____

Ties that are found and in good condition are noted as 'existing'.
New ties are to the head of a nail with a disk marked 'Corner Tie'.

Statement of evidence for this corner location is on back of this page.

I hereby certify that this document was researched and prepared by me or under my direct supervision and that I am a licensed Land Surveyor under the laws of the State of Minnesota.

Signature [Signature]

Date 4/18/02

License No. 10461

Title: Land Surveyor Professional Engineer County Surveyor County Engineer

Statement of Evidence:

B222

The Northeast Corner of Section 22, Township 38 North, Range 29 West, Alberta Township, 4th Principal Meridian, Benton County, Minnesota.

In August of 1855 this corner was established by GLO, Oscar F. Davis set a wood post at the location and bearing trees were recorded.

13" B. Oak N 51 1/2 E	27 links
14" Sugar S 86 1/4 W	52 links

The County Surveyor records in Book 2, page 231 shows an iron monument, in 1912, with the following ties.

Corner F.P.	SW	41
NW Corner Blacksmith shop	SE	45

In 1960, ties called for an iron pipe with the following reference ties.

T.P.	NE	49.5'
Iron Pipe 2' NW from corner of shed	SE	46.9'
PP	SW	49.6'
14" Elm	SE	89.7'

Undated and Unspecific ties exist.

T.P.	NE	51.5
------	----	------

On August 14, 2001 Westwood Professional Services, Inc. found a PK at the centerlines of County Road 12 and Township Road 65. We dug with a backhoe down 18" at the location of the PK and found a 1" X 3" rectangular iron bar of unknown length, with a mark on top.

On December 19, 2001 Westwood Professional Services, Inc. set a cast iron monument, down 6 inches over the found 1" X 3" rectangular iron bar and established reference ties. We checked for the previous ties from 1912 and 1960, but all had been destroyed. Corner is based on a perpetuated location based on the 1912 record.

Coordinates Obtained by GPS
NAD 83 (1996 Adjustment)
N-180420.145
E-531745.602

MARILYN J. NOVAK
COUNTY RECORDER
BY Marilyn J. Novak DEPUTY

OFFICE OF
BENTON COUNTY RECORDER
BENTON COUNTY, MN
CERTIFIED TO BE FILED
AND/OR RECORDED ON

285648

2002 MAY -7 A 8:31