

# CERTIFICATE OF LOCATION OF GOVERNMENT CORNER

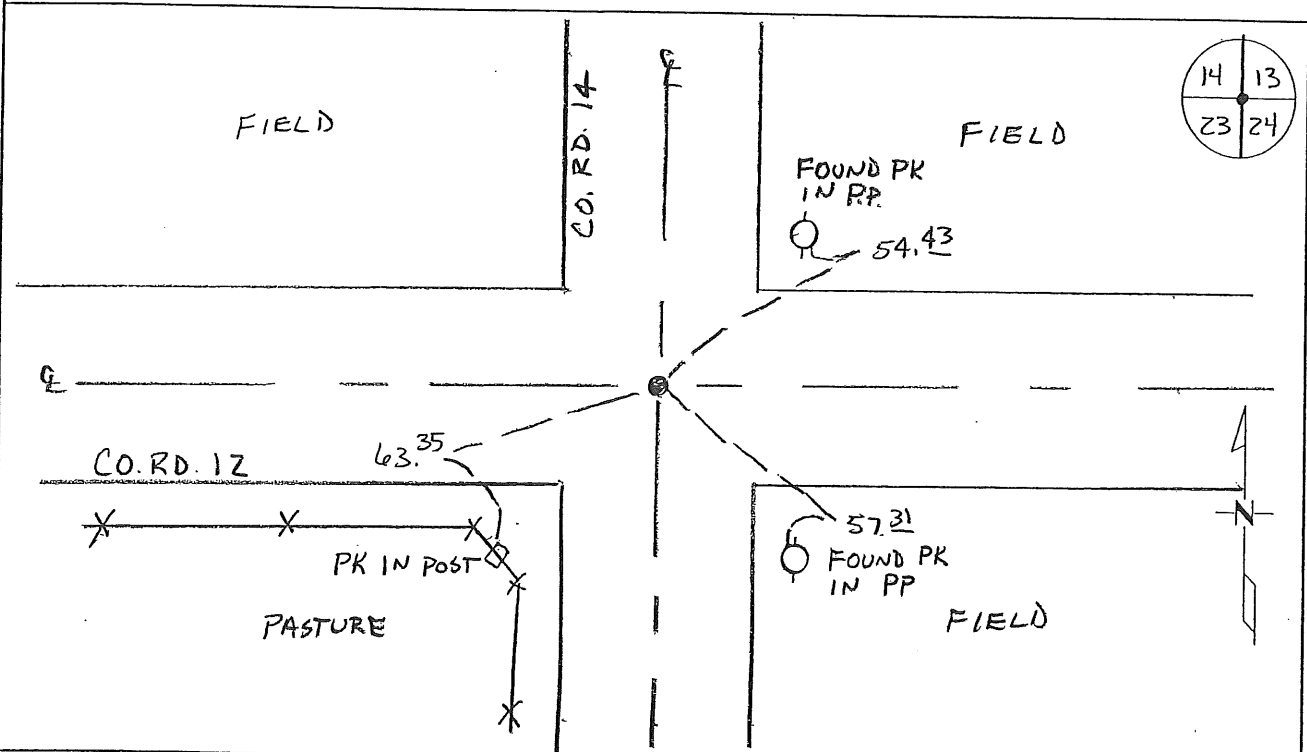
NORTHEAST Corner of Section 23, Township 38, Range 29  
4TH Principal Meridian, State of Minnesota, County of Benton

At the corner location shown on the sketch:

On 11-12-08 found a CAST IRON MONUMENT

left monument as found       lowered monument       removed monument (explain)

On \_\_\_\_\_ placed an \_\_\_\_\_



Statement of evidence for this corner location is on back of this page.

I hereby certify that this document was researched and prepared by me or under my direct supervision and that I am a licensed Land Surveyor under the laws of the State of Minnesota.

Signature Ch. Hough  
Deputy County Surveyor  
License No. 43932

Date: 12/17/08

**Statement of Evidence:**

**B232**

Northeast Corner of Section 23, Township 38 North, Range 29 West, Alberta Township,  
4<sup>th</sup> Principal Meridian, Benton County, Minnesota.

- 1855 Original US General Land Office survey set a wood post at this location and bearing trees were recorded.
- |             |            |          |
|-------------|------------|----------|
| 12" Elm     | N 17 W     | 70 links |
| 10" Bur Oak | N 39 1/2 E | 65 links |
- 1924 County Surveyor's Record Book 2, page 284, and Record Book A, Map No. 46 shows a survey subdividing Section 24. Corner is marked by an iron with tie:
- |        |    |        |
|--------|----|--------|
| W. Oak | SW | 126.4' |
|--------|----|--------|
- 1925 Court Case concerning boundary dispute refers to 1924 survey by S.S. Chute, which refers to the NW corner of Sec. 24 being a stone monument with the 1/16<sup>th</sup> corner set east at 1319.50 feet.
- 1933 County Engineer's notebook No. 70 contains road survey by H. G. Elletson, which notes: couldn't find corner, but lists ties below to corner set. County Surveyor's Record Book 2, page 282, also notes an iron at the corner with same ties:
- |           |    |       |
|-----------|----|-------|
| W. Oak    | SW | 126.4 |
| Iron Pipe | NE | 50.0  |
- Record Book also calls for a hub and rock with the same above reference ties.
- 1944 County Engineer's Notebook No. 157 contains road survey for CAR No. 43 running north to south along the section line. Corner is shown as a hub set in center of road with SAR No. 12 east and west. Ties:
- |    |    |       |
|----|----|-------|
| PP | NE | 49.3' |
| PP | SE | 49.3' |
- Later Ties (1963):
- |      |    |      |
|------|----|------|
| P.P. | NE | 50.2 |
| P.P. | SE | 49.9 |
- 1966 County Engineer's Notebook No. 252 contains road survey for CSAH No. 12 running west to east. Corner is shown as an iron in 4-way road intersection. Ties same as 1963 above.
- 1993 Sidney P. Williamson, LS 10918, found a 3/4" solid iron at the intersection of County Roads. He replaced it with a cast iron monument and filed a Certificate of Location (#223485).
- 2001 Westwood Professional Services, Inc. found a cast iron monument at the intersection of the centerlines of County Road 12 (running east and west) and County Road 14 (running north and south). We found an oak stump to the Southwest that fit the 1924 tie to the iron. We could not find the pipe and the power poles were new.  
County Coordinates Obtained by GPS (Cast Iron Monument)  
NAD 83 (1996 Adjustment)  
N-180371.986  
E-536967.783
- 2008 Westwood Professional Services, Inc. found a cast iron monument at the intersection of the centerlines of County Road 12 (running east and west) and County Road 14 (running north and south). CIM fits 1993 Williamson ties. CIM is accepted as marking the obliterated position for this corner. Coordinates obtained by GPS coincide with 2001 position.

12-24

A 362620

Certified, Filed and or Recorded on  
Dec. 26, 2008 AT 10:37AM

Signed: CK  
MARILYN J NOVAK ~~E~~ V I  
BENTON COUNTY MINNESOTA  
MARILYN J NOVAK  
COUNTY RECORDER

## DOCUMENT COVER SHEET

Document Name: **GOVERNMENT CORNER**

**BENTON COUNTY OF**

**THE PUBLIC**

Document Date: **12/17/2008**

This cover sheet is being attached to this document to provide room for recording information and is considered part of this document

# CERTIFICATE OF LOCATION OF GOVERNMENT CORNER

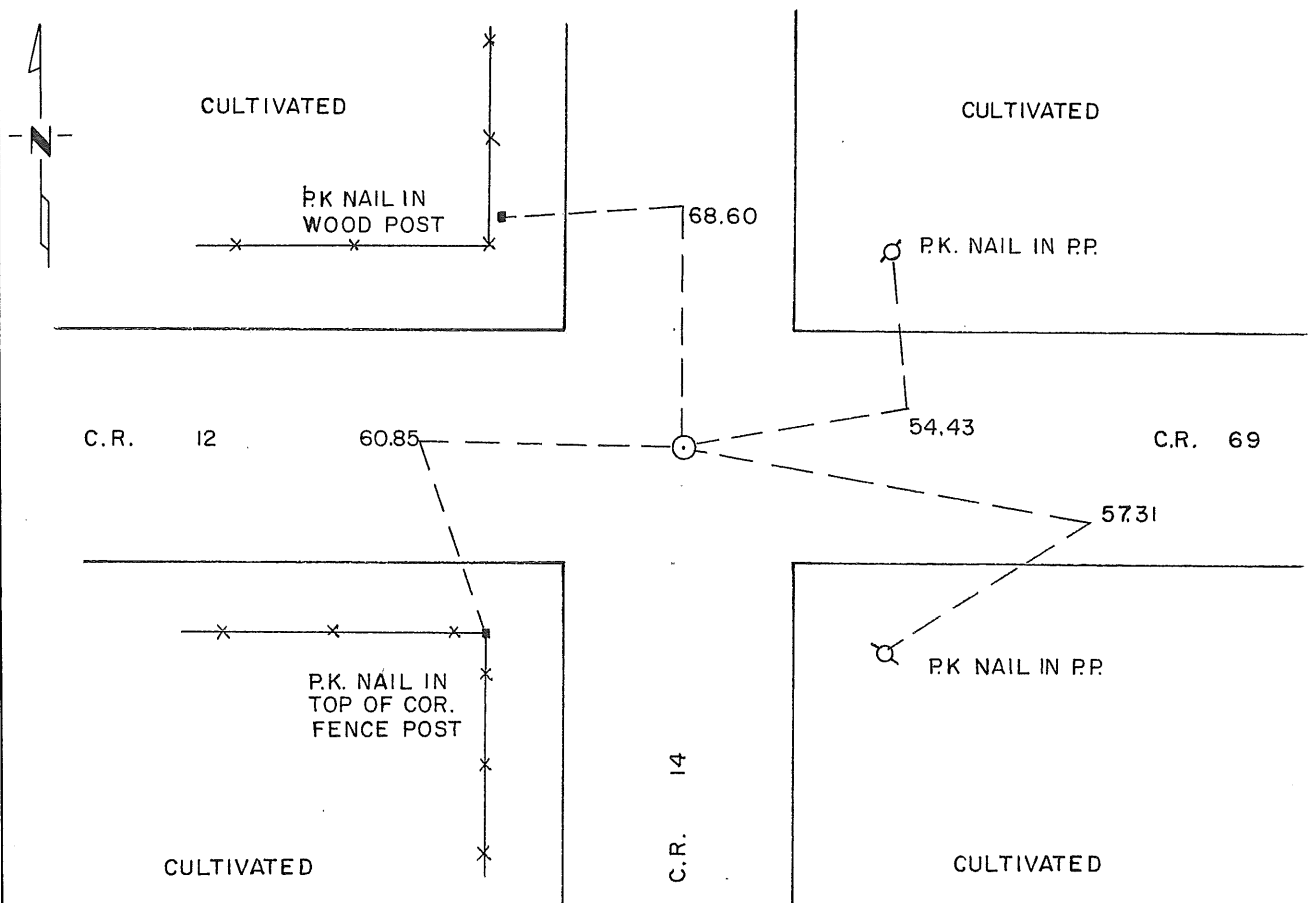
NORHTEAST Corner of Section 23, Township 38, Range 29, \_\_\_\_\_ P.M.

STATE OF MINNESOTA, County of BENTON

At the corner location shown on the sketch:

- On 4-27-93 found a 3/4" SOLID IRON  
DATE
- left monument as found,  lowered monument,  removed monument (explain)
- On 6-17-93 placed a STANDARD CAST IRON MONUMENT  
DATE

### SKETCH OF REFERENCE TIES



Statement of evidence relative to this corner location is on back of page.

I hereby certify that this document and the data contained herein was prepared by me or under my direct supervision.

Sidney R. Williamson 5/24/94  
SIGNATURE DATE

Registration No. 10918

- Land Surveyor,  Professional Engineer
- County Surveyor,  County Engineer

### OFFICE OF THE COUNTY RECORDER

County of \_\_\_\_\_

I hereby certify that this document was filed in the Co. Recorders office at \_\_\_\_\_ .M. on the \_\_\_\_\_ day of \_\_\_\_\_ A.D., 19 \_\_\_\_

County Recorder \_\_\_\_\_

By \_\_\_\_\_, Deputy

DOCUMENT NO. \_\_\_\_\_

Statement of Evidence:

1. In 1855, the Original Government Survey was performed.
2. Benton County Survey Records indicate an iron at this corner.
3. On April 27, 1993, Williamson-Kotsmith, Inc. found a 3/4 inch solid iron at the intersection of County Roads.
4. On June 22, 1993, Williamson-Kotsmith, Inc. set a Standard Cast Iron Monument at this location.

223485

OFFICE OF  
BENTON COUNTY RECORDER  
BENTON COUNTY, MN  
CERTIFIED TO BE FILED  
AND/OR RECORDED ON

JUN 17 1 10 PM '94

ALICE G. EYER  
COUNTY RECORDER

BY [Signature] CLERK