

409204

Certified, Filed and or Recorded on  
April 29, 2015 2:20 PM

BENTON COUNTY MINNESOTA  
MARILYN J NOVAK  
COUNTY RECORDER

By: CK

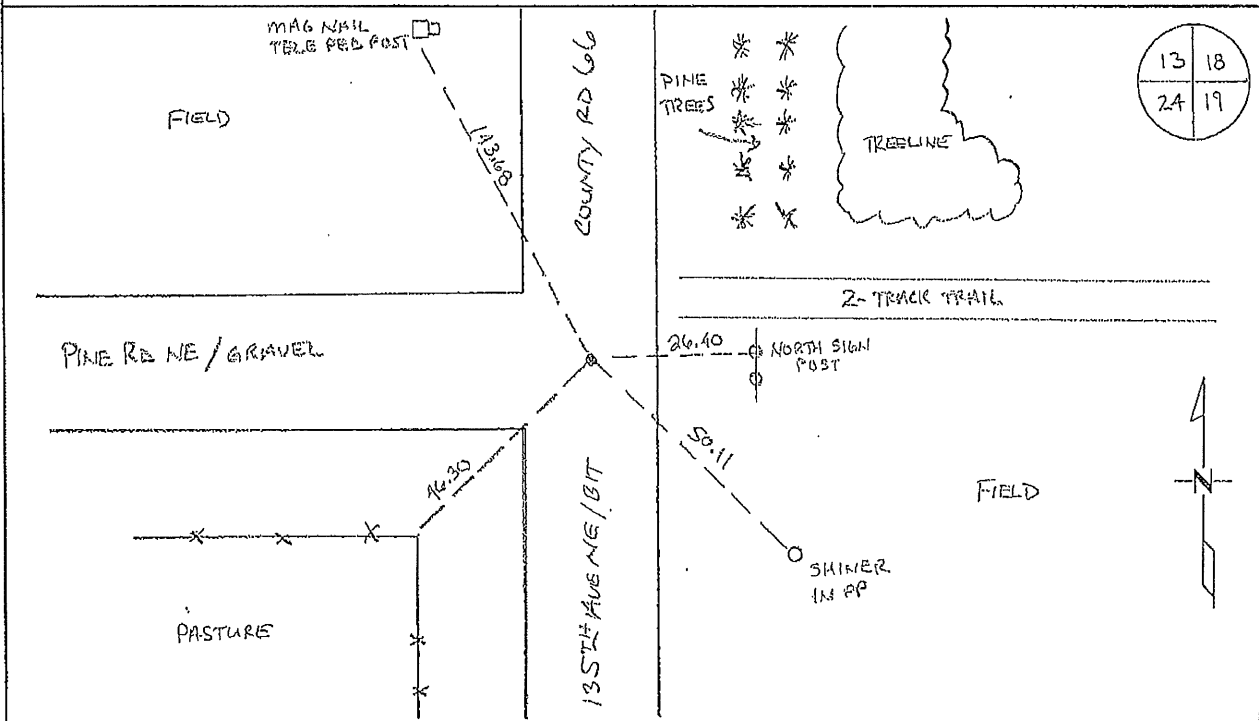
G--V--1

# CERTIFICATE OF LOCATION OF GOVERNMENT CORNER

NORTHEAST Corner of Section 24, Township 38, Range 29  
4TH Principal Meridian, State of Minnesota, County of Benton

At the corner location shown on the sketch:

- On 03/24/2015 found a 1/2" REBAR ON CENTERLINE N/S/W DOWN 0.5 FT  
FROM FINISHED SURFACE
- left monument as found       lowered monument       removed monument (explain)
- On \_\_\_\_\_ placed an \_\_\_\_\_



Statement of evidence for this corner location is on back of this page.

I hereby certify that this survey, plan, or report was prepared by me or under my direct supervision and that I am a duly Licensed Land Surveyor under the laws of the state of Minnesota.

Signature Jerome C Wittstock  
Jerome C. Wittstock, PS, CFedS, Benton County Surveyor  
License No. 19552

Date: 4/29/2015

Benton County Surveyor's Office  
 Jerome C. Wittstock, County Surveyor  
 Minnesota License No. 19552

**Statement of Evidence:**

B242

Northeast Corner of Section 24, Township 38 North, Range 29 West, Alberta Township,  
 4<sup>th</sup> Principal Meridian, Benton County, Minnesota.

- 1849 Original US General Land Office survey set a wood post and bearing trees noted as:
- |             |        |          |
|-------------|--------|----------|
| 12" Elm     | N 87 E | 25 links |
| 8" Elm      | S 32 E | 29 links |
| 6" Basswood | S 65 W | 27 links |
| 8" Blk Oak  | N 35 W | 66 links |
- 1924 County Surveyor's Record Book 2, page 284 and Record Book A, Map No. 46, shows a survey subdividing Section 24. Corner is shown marked by an iron with ties:
- |          |    |      |
|----------|----|------|
| 8" Maple | SE | 53.0 |
| Cor FP   | SW | 25.5 |
- 1933 County Engineer's notebook No. 70 contains a road survey by H. G. Elletson, which notes the following reference ties to an iron monument in road intersection with roads running north, south, and west:
- |          |    |       |        |    |       |
|----------|----|-------|--------|----|-------|
| 8" Maple | SE | 53.0' | Cor FP | SW | 34.5' |
|----------|----|-------|--------|----|-------|
- 1936 County Engineer's Notebook No. 101 shows survey for road running south to north. Notes show corner marked by a hub and iron with SAR 12 west and fence east. Ties:
- |          |    |       |         |    |       |
|----------|----|-------|---------|----|-------|
| 8" Maple | SE | 52.9' | Cor. FP | SW | 34.7' |
|----------|----|-------|---------|----|-------|
- 1937 County Engineer's notebook No. 143 contains a road survey by H. G. Elletson for SAR No. 12. Notes show road survey run east, but road never built. Tie:
- |          |    |       |
|----------|----|-------|
| 8" Maple | SE | 52.9' |
|----------|----|-------|
- 1973 County Surveyor's Record Book 2, page 262, notes the following reference ties to an iron
- |    |    |      |                      |    |      |
|----|----|------|----------------------|----|------|
| PP | SE | 50.5 | N Steel Post of Sign | NE | 21.8 |
|----|----|------|----------------------|----|------|
- (Also noted in Notebook 101 as a found corner.)
- 1984 Paul Wellen, LS 10461, found a 1" Solid Pin at the centerline of roads north/south/west. He replaced it with a cast iron monument and filed a Certificate of Location (#173402).
- 1995 Comstock and Davis performed GPS work under contract with Benton County and Coordinates Obtained by GPS NAD 83 (1986 Adjustment) to a 1/4" iron pin:
- |    |            |
|----|------------|
| N- | 180266.993 |
| E- | 542205.472 |
- 2001 Westwood Professional Services, Inc. found a 1/4" rebar at centerline/centerline. No evidence was found of above ties except: PP SE 50.15'
- 2004 Westwood Professional Services, Inc. found 1/4" pin.  
 County Coordinates Obtained by GPS  
 NAD 83 (1996 Adjustment)  
 N- 180267.269  
 E- 542205.249
- 2015 The Benton County Surveyor's Office found a 1/2" rebar at the intersection of centerlines north, south and west as called for in 1984. The tie to the power pole fits the 1984 measurement and the remaining ties from 1984 have been changed. The found rebar is accepted as marking the corner position.

# CERTIFICATE OF LOCATION OF GOVERNMENT CORNER

N. E. \_\_\_\_\_ Corner of Section 24, Township 38, Range 29, \_\_\_\_\_ P.M.

STATE OF MINNESOTA, County of Benton

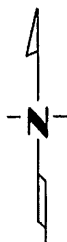
At the corner location shown on the sketch:

On \_\_\_\_\_ found a \_\_\_\_\_  
DATE

left monument as found,  lowered monument,  removed monument (explain)

On \_\_\_\_\_ placed a \_\_\_\_\_  
DATE

## SKETCH OF REFERENCE TIES



Filed under S. E. Corner Section 13, T 38 R 29

Certificate # 173402

Statement of evidence relative to this corner location is on back of page.

I hereby certify that this document and the data contained herein was prepared by me or under my direct supervision.

\_\_\_\_\_  
SIGNATURE DATE

Registration No. \_\_\_\_\_

Land Surveyor,  Professional Engineer

County Surveyor,  County Engineer

## OFFICE OF THE REGISTER OF DEEDS

County of \_\_\_\_\_

I hereby certify that this document was filed in the Reg. of Deeds office at \_\_\_\_\_ .M. on the \_\_\_\_\_ day of \_\_\_\_\_ A.D., 19 \_\_\_\_\_

Register of Deeds \_\_\_\_\_

By \_\_\_\_\_, Deputy

DOCUMENT NO. \_\_\_\_\_

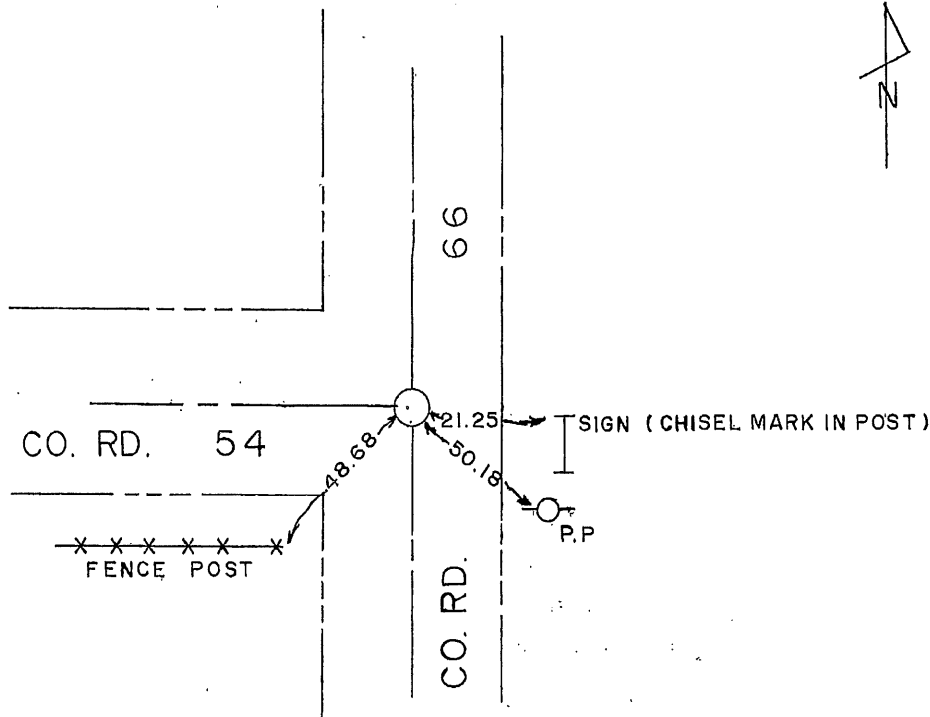
Should Be NORTH EAST CORNER Section 24, T38 R29

# CERTIFICATE OF LOCATION OF GOVERNMENT CORNER

I hereby certify that on the 6 day of JUNE, 19 84  
I did SET the SOUTH EAST corner of Section 13,  
Twp. 38, Rg. 29, BENTON County, Minnesota, which  
was evidenced by 1" SOLID IRON 4" DEEP

I further certify that in order to perpetuate said corner I did  
at the exact location thereof place a permanent marker consisting  
of CASTIRON MONUMENT and that  
I did establish witness or reference monuments as shown below:

1282  
1338  
14112  
1438  
who  
1438  
1438



173402

I hereby certify that the above  
is true and correct and that I am  
a registered Land Surveyor under  
the laws of the State of Minnesota.

[Signature]

Minn. Registration No. 10461

Office of the County Recorder,  
Benton County, Minn.

I hereby certify that the within instrument  
was filed for record in this office on the  
16 day of May, 19 85  
at 11:00 A.M.

Alice C. Engelmeier  
County Recorder

By NO Deputy.