

405005

Certified, Filed and or Recorded on August 19, 2014 1:18 PM

BENTON COUNTY MINNESOTA
MARILYN J NOVAK
COUNTY RECORDER

By: BW

G--V--I

CERTIFICATE OF LOCATION OF GOVERNMENT CORNER

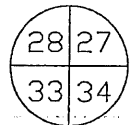
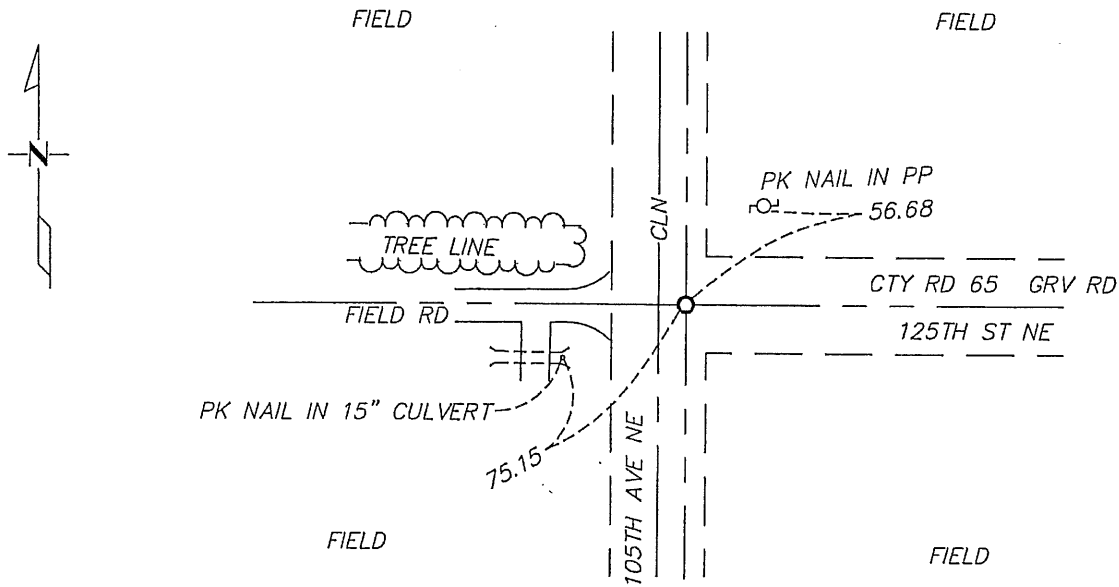
Northeast Corner of Section 33, Township 38, Range 29
4TH Principal Meridian, State of Minnesota, County of Benton

At the corner location shown on the sketch:

On 06/29/06 found a 1/2" PIPE CAPPED 12684
DATE

left monument as found lowered monument removed monument (explain)

On _____ placed an _____
DATE



Approved: _____ Date: _____
COUNTY SURVEYOR

Statement of evidence for this corner location is on back of this page.

I hereby certify that this document was researched and prepared by me or under my direct supervision and that I am a licensed Land Surveyor under the laws of the State of Minnesota.

Signature Jerome C. Wittelsch Date 8-19-2014 License No. 19552

Title: Land Surveyor Professional Engineer County Surveyor County Engineer

Benton County Surveyor's Office
 Jerome C. Wittstock, County Surveyor
 Minnesota License No. 19552

Statement of Evidence:**B332**

Northeast Corner of Section 33, Township 38 North, Range 29 West, Alberta Township,
 4th Principal Meridian, Benton County, Minnesota.

- 1855 Original US General Land Office survey set a wood post at this location and bearing trees were recorded.
- 24" Blk Ash N 56 E 27 links
 22" Blk Ash N 55 ½ W 22 links
- 1895 County Surveyor's Record Book 2, page 236, shows a survey by Felix Parent of Section 34. He notes the corner being found and marked by a stone.
- 1902 County Surveyor's Record Book A, Map No. 36, and County Surveyor's Record Book 2, page 302, shows a survey of Section 33 by John Whilt. Corner is shown as marked by a stone. He also notes a distance of 39.12 chains to the North ¼ corner Sec 33 and a distance of 40.66 chains to the East ¼ corner Sec 33.
- 1951 County Engineer's Notebook No. 190 contains survey of SAR No. 3 running from the south to north. Corner is shown as a hub in road with town road running east and west and fence line running south. Ties:
- TP SE 57.6' 2nd FP SE 61.7'
- Stationing gives distances of 2720.0 feet to the East ¼ corner Section 33 and 2675.4 feet to the East ¼ corner Section 28 with a delta angle of 2-55' right.
- 1952? County Surveyor's Record Book 2, page 290, notes corner marked by a pink, cone shaped stone with point up and without a cross on it. (Page 301 notes same ties to a hub as notebook No. 190.).
- 1999 County Highway plans show assumed corner in center of old roads north-south and east. This position is 3 feet east of new north-south centerline. Highway plans show intersection lowered approximately one foot.
- 2003 Westwood Professional Services, Inc. searched corner area and found no surface monument. We re-established the 1999 assumed location based on the highway plans. From this position we made the following measurements as compared to the old record:

	<u>Westwood</u>	<u>Old</u>	<u>1951 Hwy</u>
North ¼ Sec. 33	2587.28	2581.92 (1902)	
NE Sec. 34	5126.81	5105.76 (1895)	
East ¼ Sec. 33	2721.44	2683.56 (1902)	2720.0
East ¼ Sec. 28	2674.23		2675.4

Measured delta angle of 2-47-37 right, which compared well with 1951 highway delta. Based on these measurements, it is difficult to determine where to dig for the stone of record. Together with the fact that the road is a newly constructed bituminous road that may have destroyed the stone by the sub-cutting of the intersection, it was determined to be impractical for excavation. The old road intersection was accepted as the obliterated position of the corner. A ½ " iron pipe was set with cap No. 12684.

Coordinates Obtained by GPS to Computed & Set Assumed Position.
 NAD 83 (1996 Adjustment)
 N- 169751.999
 E- 526675.883

- 2006 The Benton County Surveyor's Office found the iron pipe capped 12684 set in 2003, verified the 2003 coordinates and established reference ties.