

428869

Certified, Filed and or Recorded on
April 26, 2018 9:49 AM

BENTON COUNTY MINNESOTA
CHERYL L. KANTOR
COUNTY RECORDER

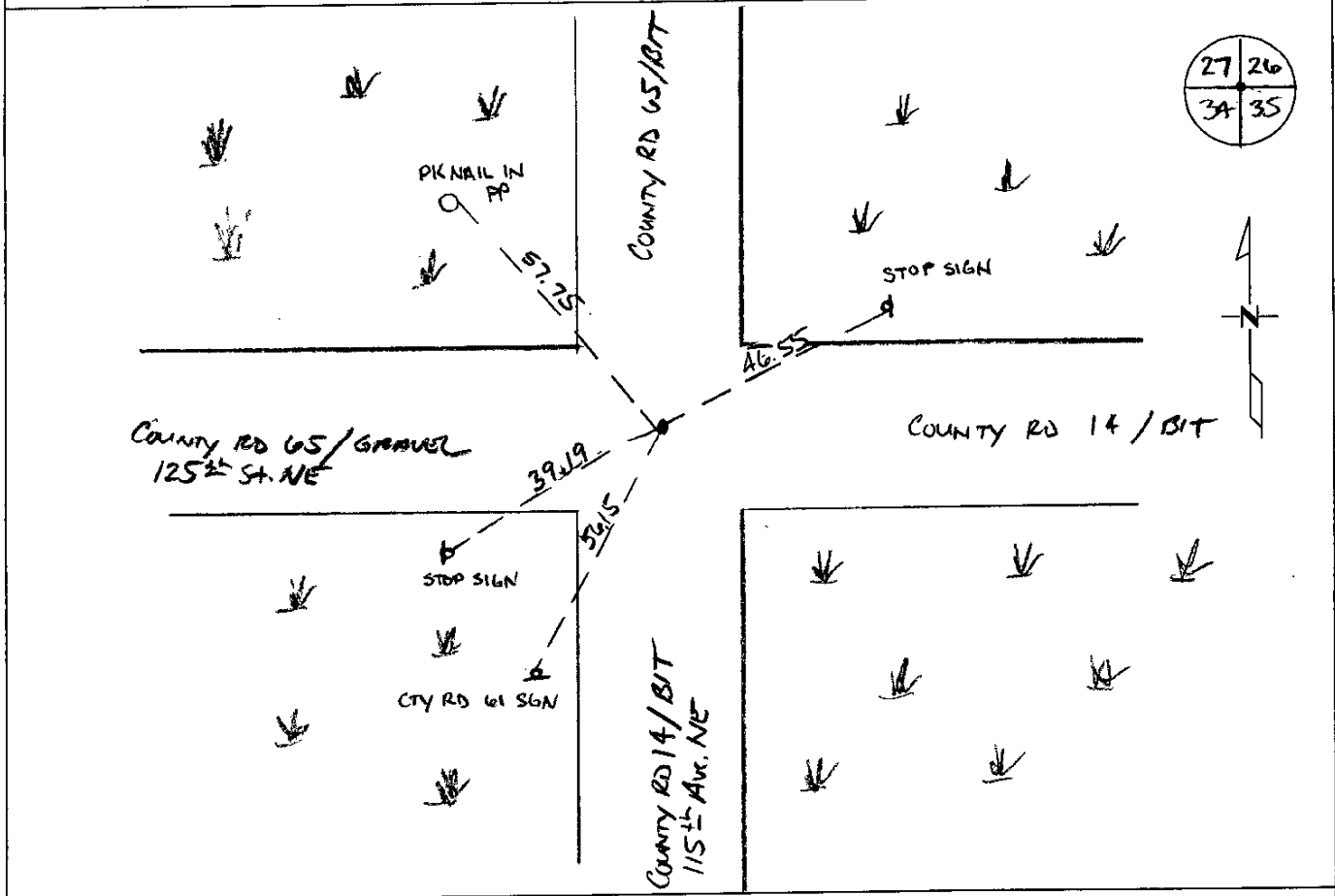
By: [Signature]

6 - V - I

CERTIFICATE OF LOCATION OF GOVERNMENT CORNER

NORTHWEST Corner of Section 3A, Township 38 North, Range 29 West, Fourth
Principal Meridian, Benton County, Minnesota.
At this corner location shown on the sketch:

- On _____ found a _____
- left monument as found lowered monument removed monument (explain)
- On 11/21/2014 placed an 1 1/4" GALV. NAIL WITH BENTON COUNTY SURVEYOR DISK OVER FOUND MONUMENT



Statement of evidence for this corner location is on back of this page.

I hereby certify that this document was researched and prepared by me or under my direct supervision and that I am a Licensed Land Surveyor under the laws of the State of Minnesota.

Signature Jerome C. Wittstock
Jerome C. Wittstock, P.S., CFedS
License No. 19552

Date: 4/11/2018

Benton County Surveyor's Office
 Jerome C. Wittstock, County Surveyor
 Minnesota License No. 19552

Statement of Evidence:**B342**

Northeast Corner of Section 34, Township 38 North, Range 29 West, Alberta Township,
 4th Principal Meridian, Benton County, Minnesota.

- 1855 Original US General Land Office survey set a wood post at this location and bearing trees were recorded.
- | | | |
|---------|---------|-----------|
| 12" Elm | S 3 ½ W | 307 links |
| 12" Elm | N 87 E | 300 links |
- 1895 County Surveyor's Record Book 2, page 236, shows a survey by Felix Parrent of Section 34. He notes finding old government corner with Gov't BT, Elm NE, being OK.
- 1907 County Road Book, pages 4-6, contains a road survey by Felix Parent, County Surveyor, for State Road. Survey shows corner and road run north-south. Distance from SE corner of Section 34 is 5539 feet.
- 1912 County Engineer's notebook 2, page 37 contains a road survey by Cleveland for road running north and south. Notes show corner from Gov't BT Elm NE O.K. County Surveyor's Record Book 2, page 231 notes the following reference tie to GLO BT:
- | | | |
|----------------|--------|-----------|
| 12" Elm (dead) | N 87 E | 300 links |
|----------------|--------|-----------|
- 1960 County Surveyor's Record Book 2, page 236 notes the following reference ties to an iron.
- | | | |
|----|----|------|
| TP | SE | 58.2 |
| PP | NW | 58.1 |
| FP | NE | 54.6 |
- 1993 Sidney Williamson, LS 10918, found a 1" steel solid iron in the centerline of roads north/south and east/west. He replaced it with a cast iron monument and filed a Certificate of Location (#223491). Measured 5546.05 feet to the SE corner of Section 34.
- 2001 Westwood Professional Services, Inc. found a PK at the centerline of roads north/south and east/west.
- 2003 Measured 5545.95 feet to the SE corner of Section 34.
 County Coordinates Obtained by GPS to PK Nail
 NAD 83 (1996 Adjustment)
 N- 169833.178
 E- 531802.046
- 2014 The Benton County Surveyor's Office set a Benton County Surveyor washer with PK nail and verified the 2003 coordinate.

CERTIFICATE OF LOCATION OF GOVERNMENT CORNER

NORTHEAST Corner of Section 34, Township 38, Range 29, _____ P.M.

STATE OF MINNESOTA, County of BENTON

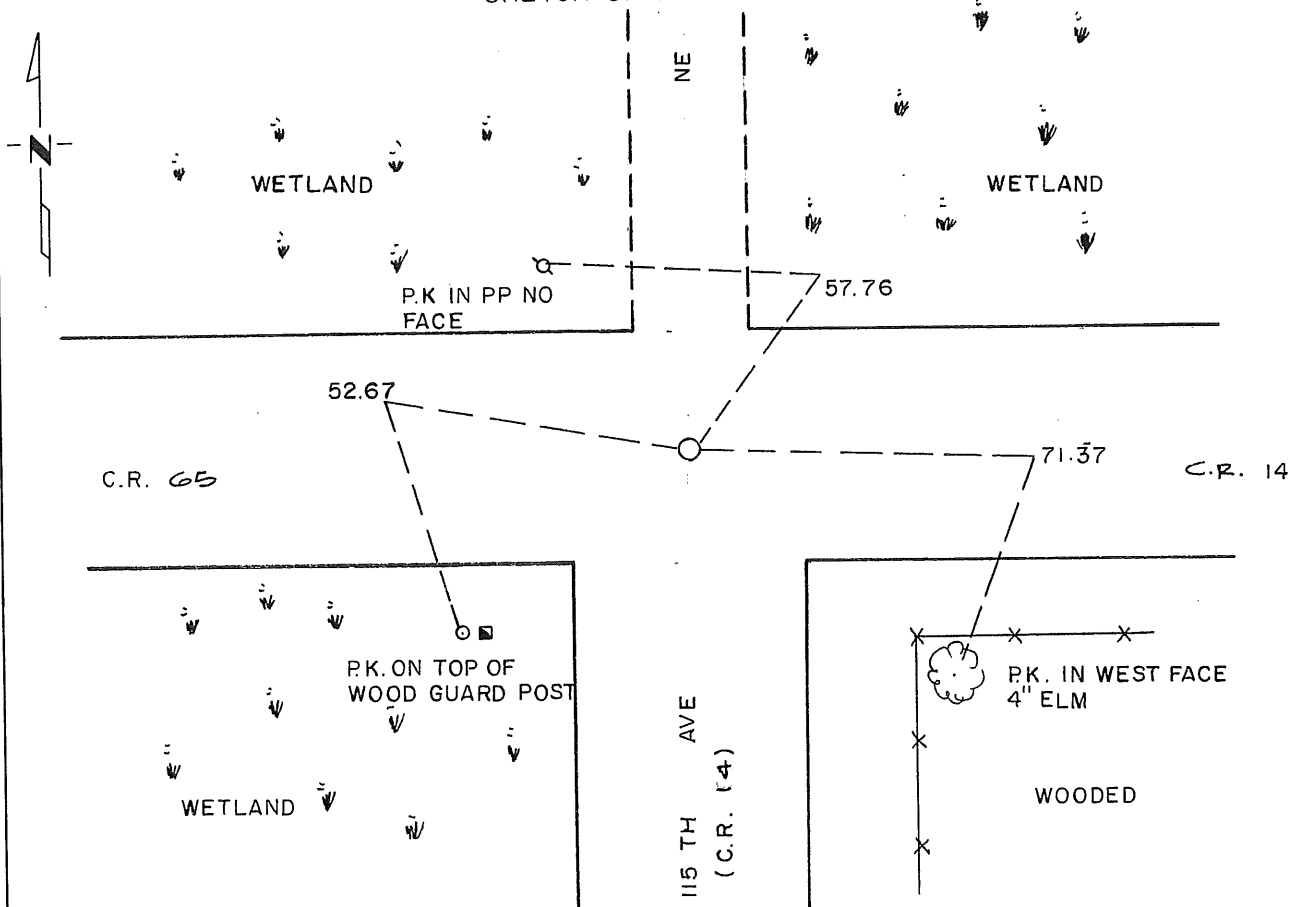
At the corner location shown on the sketch:

On 4-27-93 found a 1" STEEL SOLID IRON
DATE

left monument as found, lowered monument, removed monument (explain)

On 6-17-93 placed a STANDARD CAST IRON MONUMENT
DATE

SKETCH OF REFERENCE TIES



Statement of evidence relative to this corner location is on back of page.

I hereby certify that this document and the data contained herein was prepared by me or under my direct supervision.

Sidney P. Williamson 5/24/94
SIGNATURE DATE

Registration No. 10918

Land Surveyor, Professional Engineer

County Surveyor, County Engineer

OFFICE OF THE COUNTY RECORDER

County of _____

I hereby certify that this document was filed in the Co. Recorders office at _____ .M. on the _____ day of _____ A.D., 19 _____

County Recorder _____

By _____, Deputy

DOCUMENT NO. _____

Statement of Evidence:

1. Original Government Survey was performed in 1855.
2. On April 22nd 1895, Felix Parent found the original government corner.
3. In 1960, Joseph P. Kotsmith placed an iron at the intersection of County Road 14 and 65.
4. On April 27th, 1993 Williamson-Kotsmith, Inc. found a 1" steel iron at this location.
5. On June 17th 1993, Williamson-Kotsmith, Inc. removed iron and set a Standard Cast Iron Monument at the same location.

223491

OFFICE OF
BENTON COUNTY RECORDER
BENTON COUNTY, MN
CERTIFIED TO BE FILED
AND/OR RECORDED ON

JUN 17 1 10 PM '94

ALICE O. ECKHART
COUNTY RECORDER

BY *Jew* DEPUTY