

217201

424518

Certified, Filed and or Recorded on  
August 15, 2017 3:06 PM

BENTON COUNTY MINNESOTA  
CHERYL L. KANTOR  
COUNTY RECORDER

By: LCB

6-V-1

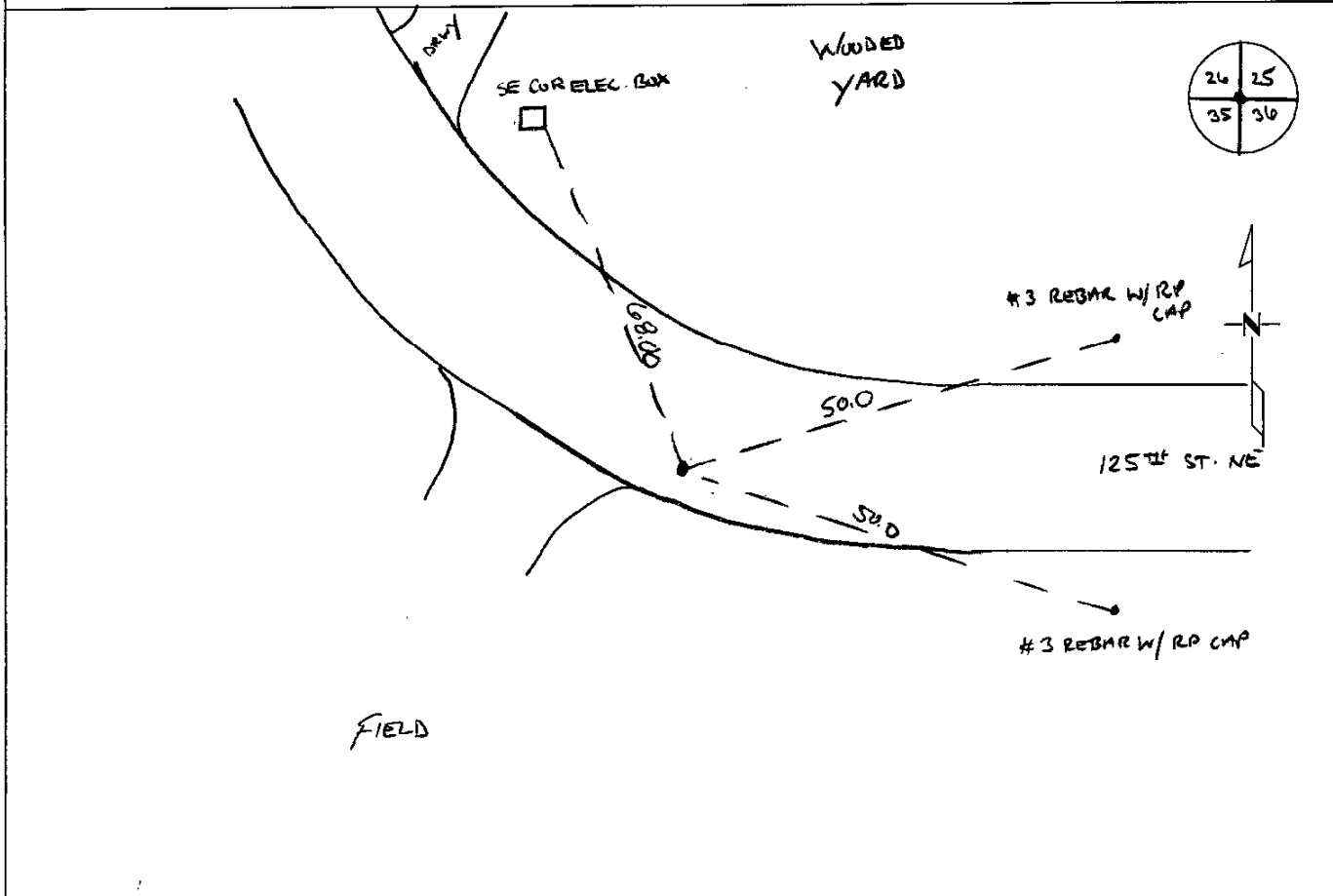
### CERTIFICATE OF LOCATION OF GOVERNMENT CORNER

NORTHEAST Corner of Section 35 Township 38 North, Range 29 West, Fourth  
Principal Meridian, Benton County, Minnesota.  
At this corner location shown on the sketch:

On 11/18/2014 found a CAST IRON MONUMENT

left monument as found     lowered monument     removed monument (explain) <sup>↑</sup>

On \_\_\_\_\_ placed an \_\_\_\_\_



Statement of evidence for this corner location is on back of this page.

I hereby certify that this document was researched and prepared by me or under my direct supervision and that I am a Licensed Land Surveyor under the laws of the State of Minnesota.

Signature Jerome C. Wittstock  
Jerome C. Wittstock, P.S., CFedS  
License No. 19552

Date: 15 August 2017

**Statement of Evidence:**

**B352**

Northeast Corner of Section 35, Township 38 North, Range 29 West, Alberta Township,  
4<sup>th</sup> Principal Meridian, Benton County, Minnesota.

1855 Original US General Land Office survey set a wood post at this location and bearing trees were recorded.

10" Aspen	N 35 W	75 links
12" Blk Ash	S 78 W	205 links

1944 County Engineer's Notebook No. 157 contains road survey for CAR No. 43 running north to south along the section line. Corner is shown as a set iron. Tie:

12" Elm	N	45.6'
---------	---	-------

1963 County Surveyor's Record Book 2, page 304, notes the following Highway Department reference ties to an iron:

TP	S	33.0
9" Elm	NW	167.9

1993 Sidney Williamson, LS 10918, found a ½" solid iron. He replaced it with a cast iron monument and filed a Certificate of Location (#223487).

2008 The Benton County Surveyor's Office found the cast iron monument set in 1993 from the iron mentioned in 1944 and 1963 in a gravel road bed. The measurement west to another found iron fits within about a foot of the 1963 distance. Since the found cast iron monument is believed to be a perpetuation of the 1944 and 1963 corner position, it is accepted as marking the corner position.

County Coordinates Obtained by GPS  
NAD 83 (1996 Adjustment)  
N- 169693.429  
E- 537099.638

2014 The Benton County Surveyor's Office found the cast iron monument and verified the 2008 coordinates.

# CERTIFICATE OF LOCATION OF GOVERNMENT CORNER

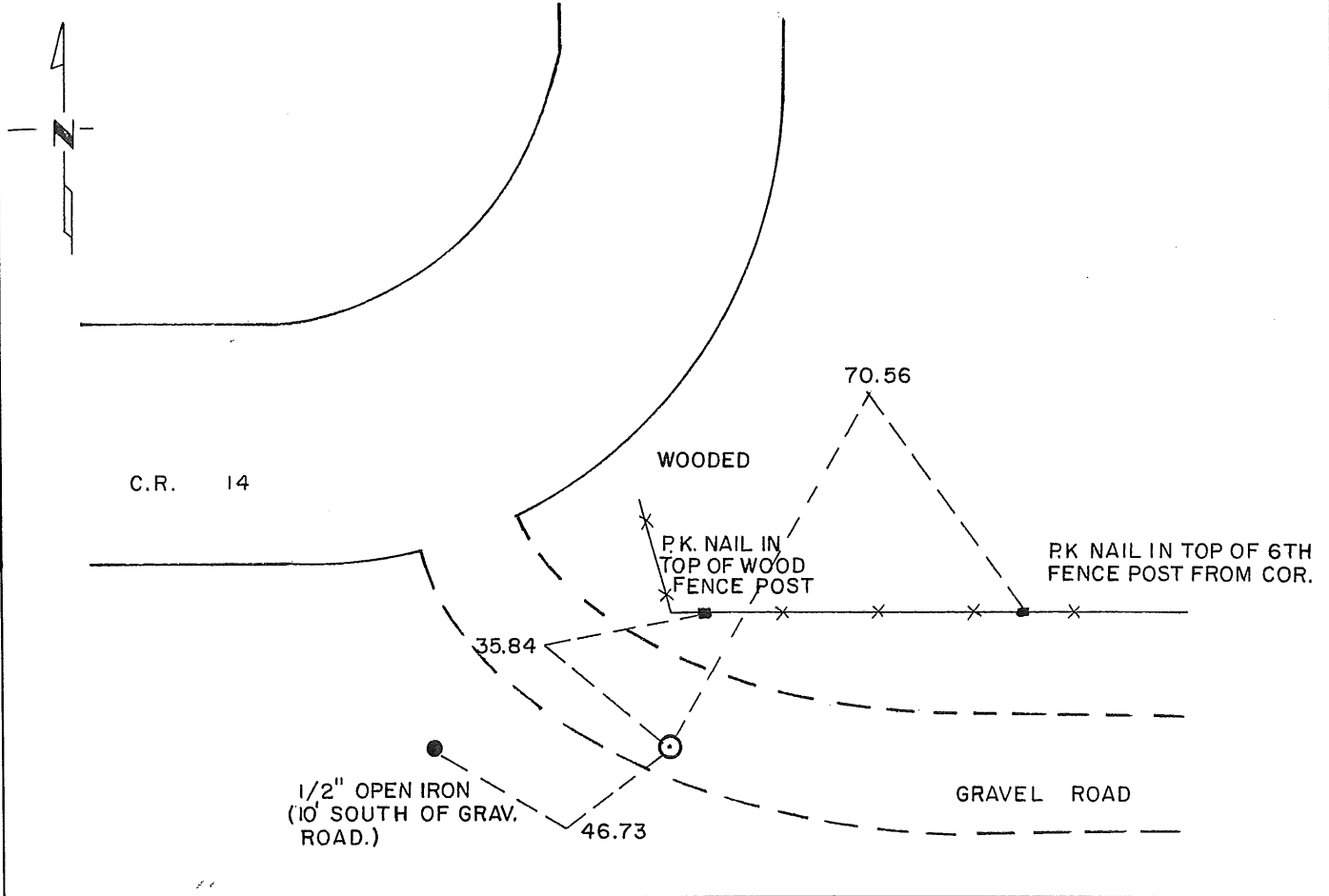
**NORTHEAST** Corner of Section **35**, Township **38**, Range **29**, \_\_\_\_\_ P.M.

STATE OF MINNESOTA, County of **BENTON**

At the corner location shown on the sketch:

- On 4-27-93 found a 1/2" SOLID IRON  
DATE MONUMENT
- left monument as found,  lowered monument,  removed monument (explain)
- On 6-17-93 placed a STANDARD CAST IRON MONUMENT  
DATE

SKETCH OF REFERENCE TIES



Statement of evidence relative to this corner location is on back of page.

I hereby certify that this document and the data contained herein was prepared by me or under my direct supervision.

*Sidney P. Williamson* 5/21/94  
SIGNATURE DATE

Registration No. 10918

- Land Surveyor,  Professional Engineer
- County Surveyor,  County Engineer

**OFFICE OF THE COUNTY RECORDER**

County of \_\_\_\_\_

I hereby certify that this document was filed in the Co. Recorders office at \_\_\_\_\_ .M. on the \_\_\_\_\_ day of \_\_\_\_\_ A.D., 19 \_\_\_\_\_

County Recorder \_\_\_\_\_

By \_\_\_\_\_, Deputy

DOCUMENT NO. \_\_\_\_\_

Statement of Evidence:

1. Original Government Survey was performed in 1855.
2. Benton County Survey Records indicate an iron in 1963.
3. On April 27, 1993, a ½ inch solid iron was found.
4. On June 17, 1993, Williamson-Kotsmith, Inc. removed iron and set a Standard Cast Iron Monument at the same location.

223487

OFFICE OF  
BENTON COUNTY RECORDER  
BENTON COUNTY, MN  
CERTIFIED TO BE FILED  
AND/OR RECORDED ON

JUN 17 1 10 PM '94

ALICE G. ENGELMEYER  
COUNTY CLERK

BY *JW* DEPUTY