

Certified, Filed and or Recorded on  
October 28, 2014 12:57 PM

BENTON COUNTY MINNESOTA  
MARILYN J NOVAK  
COUNTY RECORDER

By: CK

G - V - 4

# CERTIFICATE OF LOCATION OF GOVERNMENT CORNER

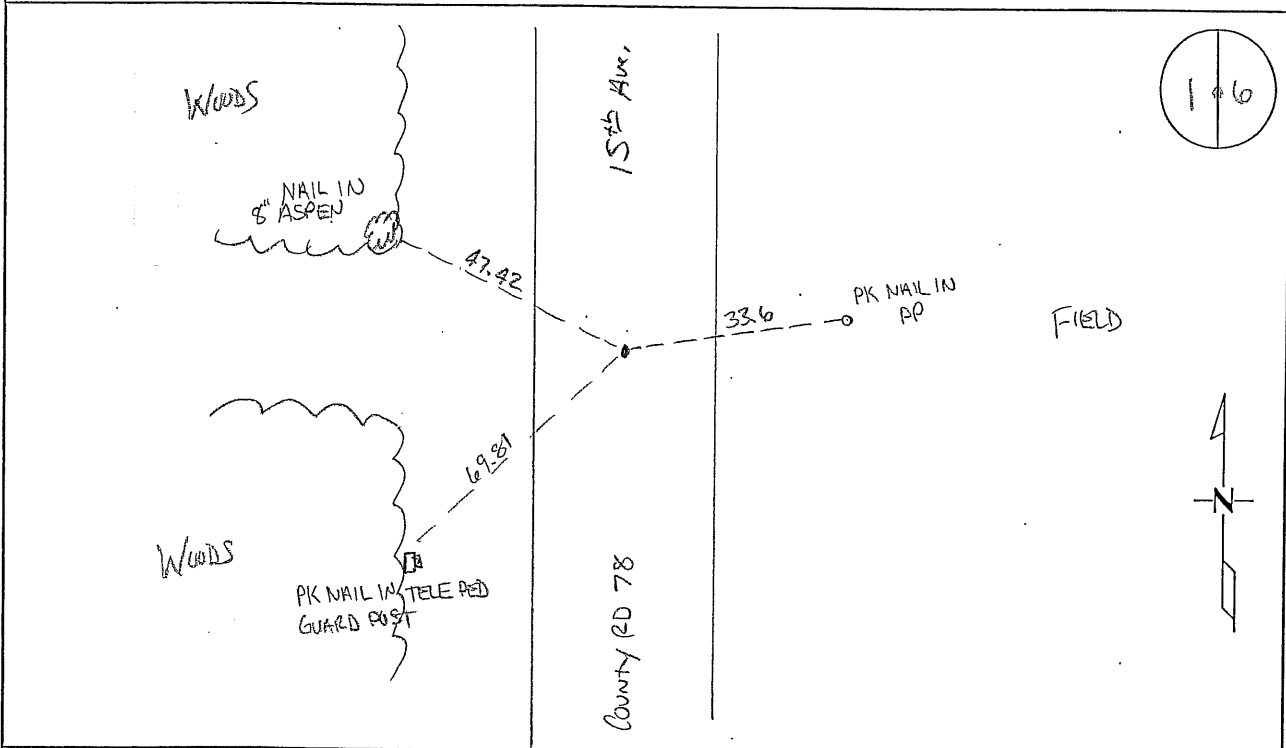
EAST QUARTER Corner of Section 1, Township 38, Range 31  
4TH Principal Meridian, State of Minnesota, County of Benton

At the corner location shown on the sketch:

On 08/08/2011 found a RR SPIKE

left monument as found       lowered monument       removed monument (explain)

On \_\_\_\_\_ placed an \_\_\_\_\_



Statement of evidence for this corner location is on back of this page.

I hereby certify that this document was researched and prepared by me or under my direct supervision and that I am a licensed Land Surveyor under the laws of the State of Minnesota.

Signature Jerome C. Wittstock  
Benton County Surveyor  
License No. 19552

Date: 28 Oct. 2014

Benton County Surveyor's Office  
 Jerome C. Wittstock, County Surveyor  
 Minnesota License No. 19552

**Statement of Evidence:****D013**

East Quarter Corner of Section 1, Township 38 North, Range 31 West, East Langola Township, 4<sup>th</sup> Principal Meridian, Benton County, Minnesota.

1849 Original US General Land Office survey set a wood post in a mound with a pit 6 links south at the corner location.

1941 County Engineer's Notebook No. 151 contains a road survey for CAR 41 running south to north on township line. Corner is shown marked by a hub set in center of road on fence line west. Ties:

FP W 37.5'

FP NW 34.8'

Stationing gives distances of 2616.6 feet to the SE corner and 2575.1 feet to the NE corner with a no angle.

2001 Westwood Professional Services, Inc. found a RR spike in the centerline of County Road 78 (running north and south) that could be corner.

2002 No resurvey information of this corner was found in Benton County Surveyor's records.

2011 The Benton County Surveyor's Office found the railroad spike reported in 2001 in the north-south centerline of County Road 78 on a fence line west. The distance north is 7.46 feet short while the distance south is 3.1 feet long of the 1941 distances. Since the railroad spike falls in the north-south centerline on a fence west as called for in 1941 and fits the 1941 distances within reason, the railroad spike is accepted as marking the obliterated corner position.

Coordinates Obtained by GPS

NAD 83 (1996 Adjustment) to the Railroad Spike:

N-193759.889

E- 478336.883