

Certified, Filed and or Recorded on August 19, 2014 1:18 PM

BENTON COUNTY MINNESOTA  
MARILYN J NOVAK  
COUNTY RECORDER

By: BW

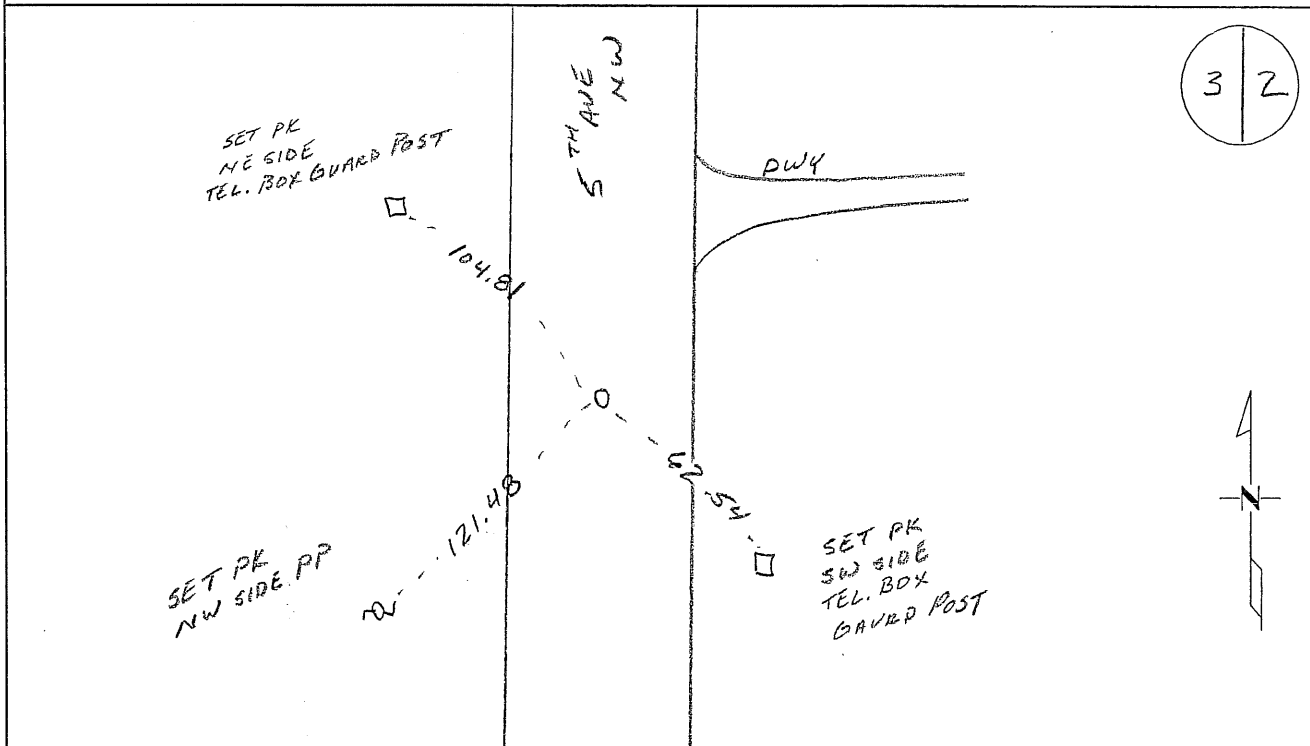
G - V - I

# CERTIFICATE OF LOCATION OF GOVERNMENT CORNER

EAST QUARTER Corner of Section 3, Township 38, Range 31  
4TH Principal Meridian, State of Minnesota, County of Benton

At the corner location shown on the sketch:

- On \_\_\_\_\_ found a \_\_\_\_\_
- left monument as found       lowered monument       removed monument (explain)
- On 12-5-12 placed an 1/2" PIPE CAPPED 19552



Statement of evidence for this corner location is on back of this page.

I hereby certify that this survey, plan, or report was prepared by me or under my direct supervision and that I am a duly Licensed Land Surveyor under the laws of the state of Minnesota.

Signature Jerome C. Wittstock  
Jerome C. Wittstock, PS, CFedS, Benton County Surveyor  
License No. 19552

Date: 8-19-2014

Benton County Surveyor's Office  
Jerome C Wittstock, County Surveyor  
Minnesota License No. 19552

**Statement of Evidence:**

**D033**

East Quarter Corner of Section 3, Township 38 North, Range 31 West, East Langola Township, 4<sup>th</sup> Principal Meridian, Benton County, Minnesota.

- 1852 Original US General Land Office survey set a wood post in a mound with pit 8 links east at the corner location.
- 1916 County Surveyor's Record Book 2, page 31 and Record Book A on Map No. 26, J.P. Soderstrum notes that he set a 5" X 5" X 24" stone at the location of the old government mound from testimony of 3 landowners. Corner is at centerline of a north-south road and a fence line from the east, which was built from the original stake. Stake had been pulled out by grader. Survey gives a distance of 40.71 chains (2686.86 feet) to the NE corner and 40.04 1/2 chains (2642.81 feet) to the SE corner of Section 3.
- 2012 The Benton County Surveyor's Office excavated a 10-foot by 14-foot hole 4-feet deep. No evidence of the 1916 stone was found and original soil was not identified. The centerline of the north-south centerline of County Road 56 was used as east-west control and the corner was proportioned from the found stone at the northeast corner of Section 3 to the CIM at the east quarter corner of Section 10. A 1/2-inch by 14-inch iron pipe capped 19552 was set to mark the position.