

Certified, Filed and or Recorded on
November 19, 2014 8:57 AM

BENTON COUNTY MINNESOTA
MARILYN J NOVAK
COUNTY RECORDER

By: CK

G -- V -- I

CERTIFICATE OF LOCATION OF GOVERNMENT CORNER

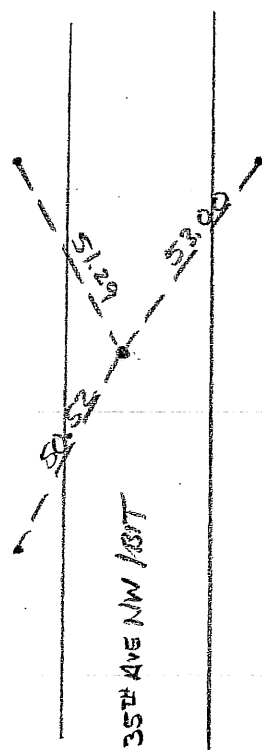
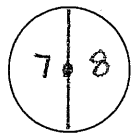
EAST QUARTER Corner of Section 7, Township 38, Range 31
4TH Principal Meridian, State of Minnesota, County of Benton

At the corner location shown on the sketch:

On 03/19/2014 found a 1/2" OPEN PIPE 15 DOWN 0.5' AND 2' WEST
OF N/S BIT. TWP ROAD

left monument as found lowered monument removed monument (explain)

On _____ placed an _____



TIES: 1/2" X 14" OPEN PIPE
CAPPED "SURVEY
REF. PT."



Statement of evidence for this corner location is on back of this page.

I hereby certify that this survey, plan, or report was prepared by me or under my direct supervision and that I am a duly Licensed Land Surveyor under the laws of the state of Minnesota.

Signature Jerome C. Wittstock
Jerome C. Wittstock, PS, CFedS, Benton County Surveyor
License No. 19552

Date: 11/18/2014

Benton County Surveyor's Office
 Jerome C. Wittstock, County Surveyor
 Minnesota License No. 19552

Statement of Evidence:**D073**

East Quarter Corner of Section 7, Township 38 North, Range 31 West, East Langola Township, 4th Principal Meridian, Benton County, Minnesota.

1852 Original US General Land Office survey set a wood post in a mound at the corner location.

1941 County Surveyor's Record Book 2, page 98, contains a survey by H.G. Elleston of Section 7, 38-31. Survey shows this corner but does not give any information about a monument. A distance of 5297.7 feet is given for the east line of Section 7. (It is assumed he set the corner lost.)

2003 6/25/03 Surveying & Engineering Professionals, Inc. found a 1" iron pipe flush with gravel road surface in center of north-south road. Pipe fit the lost position with a distance of 5293.54 feet measured between section corners.

County Coordinates determined from SEPI traverse:

NAD 83 (1996 Adjustment)

N- 188185.717

E- 451822.508

2014 The Benton County Surveyor's Office found 1/2" open iron pipe down 0.5 feet below the bituminous road surface and 2 feet west of the north-south centerline of 35th Avenue NW. The found iron fits the lost position within 0.15 feet measure 2646.8 approximately to section corners north and south. The found iron pipe is accepted as marking the corner position.