

Certified, Filed and or Recorded on  
December 02, 2014 3:56 PM

BENTON COUNTY MINNESOTA  
MARILYN J NOVAK  
COUNTY RECORDER

By: BA

G - V - I

### CERTIFICATE OF LOCATION OF GOVERNMENT CORNER

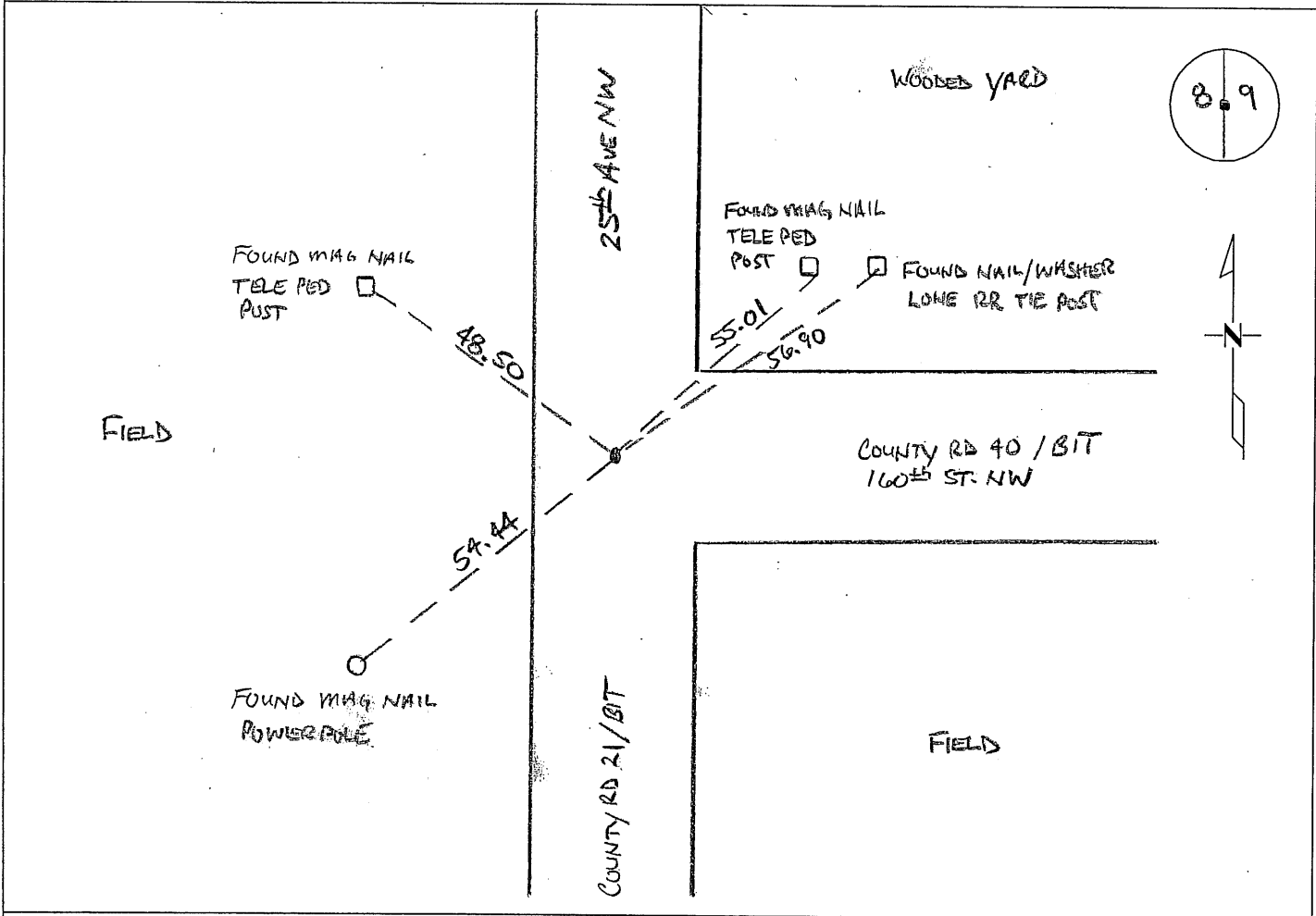
EAST QUARTER Corner of Section 8, Township 38 North, Range 31 West, Fourth  
Principal Meridian, Benton County, Minnesota.

At this corner location shown on the sketch:

On 11/24/2014 found a 1" IRON ROD (0.8' BELOW SURFACE)

left monument as found     lowered monument     removed monument (explain)

On \_\_\_\_\_ placed an \_\_\_\_\_



Statement of evidence for this corner location is on back of this page.

I hereby certify that this document was researched and prepared by me or under my direct supervision and that I am a Licensed Land Surveyor under the laws of the State of Minnesota.

Signature Jerome C. Wittstock  
Jerome C. Wittstock, P.S., CFedS  
License No. 19552

Date: 12-2-2014

Benton County Surveyor's Office  
 Jerome C. Wittstock, County Surveyor  
 Minnesota License No. 19552

**Statement of Evidence:**

D083

East Quarter of Section 8, Township 38 North, Range 31 West, East Langola Township,  
 4<sup>th</sup> Principal Meridian, Benton County, Minnesota.

1852 Original US General Land Office survey set a wood post at this location and bearing trees were recorded.

10" Bur Oak	N 54 W	84 links
10" Bur Oak	N 72 E	68 links

1931 County Engineer's Notebook No. 64 contains road survey for CR "A" (21) by H. G. Elletson. Survey notes road intersection north-south and east at 2640 feet north of the SE corner and 2672.0 feet south of the NE corner.

1957 County Engineer's Notebook No. 206 contains a survey for CSAH No. 21 running from this corner north on the section line. Corner is shown as an iron in center of road with CR 40 east. Ties are the same as listed below in 1959. Stationing gives distance of 2661.05 feet to the NE corner.

1959 County Surveyor's Record Book 2, page 100, notes an iron at the corner with the following reference ties.

Sign Post	W	20.6
PP	SW	53.35
18" Bur Oak	NE	60:15

Also on this page in 1967

PP	SW	52.65
----	----	-------

1990 Paul Wellen, LS 10461, found a 1" solid pin (down 1.0) in center of north-south road and in line with road east. He left iron and filed a Certificate of Location (#201474). Shows tie of 52.40 feet SW to a PP.

2003 6/25/03 Surveying & Engineering Professionals, Inc. found a cast iron monument in center of north-south road. Measured 2657.25 feet to the NE corner and 2650.66 feet to the SE corner.

County Coordinates determined from SEPI traverse: (Do not use)

NAD 83 (1996 Adjustment)

N- 188192.305

E- 457219.476

2014 The Benton County Surveyor's Office found the 1" iron pin down 0.8 feet below the road surface. The iron falls at the intersection of centerlines north-south and east as described from 1931 forward. No evidence of the cast iron monument reported in 2003 was found, though the coordinates fit within 0.32 feet of the found iron pin. The iron pin is accepted as marking the corner position. With the uncertainty of the 2003 monument, use the following coordinates

County Coordinates from GPS:

NAD 83 (1996 Adjustment)

N- 188192.370

E- 457219.742

Certified, Filed and or Recorded on  
November 19, 2014 8:57 AM

BENTON COUNTY MINNESOTA  
MARILYN J NOVAK  
COUNTY RECORDER

By: CK

6 - V - I

# CERTIFICATE OF LOCATION OF GOVERNMENT CORNER

EAST QUARTER Corner of Section 8, Township 38, Range 31

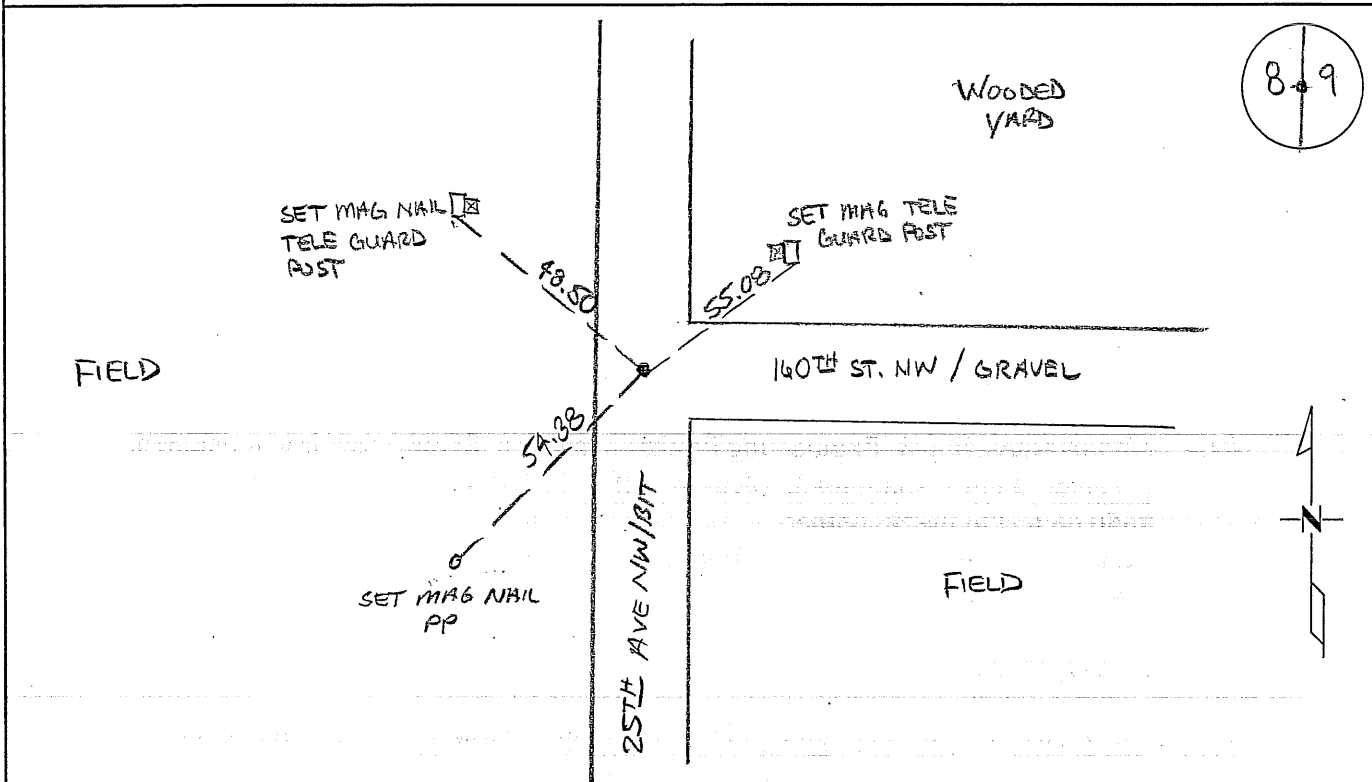
4TH Principal Meridian, State of Minnesota, County of Benton

At the corner location shown on the sketch:

On 03/12/2014 found a 1" IRON PIN AT CENTERLINE INTERSECTION  
DOWN 1.0' FROM SURFACE

left monument as found       lowered monument       removed monument (explain)

On \_\_\_\_\_ placed an \_\_\_\_\_



Statement of evidence for this corner location is on back of this page.

I hereby certify that this survey, plan, or report was prepared by me or under my direct supervision and that I am a duly Licensed Land Surveyor under the laws of the state of Minnesota.

Signature Jerome C. Wittstock  
Jerome C. Wittstock, PS, CFedS, Benton County Surveyor  
License No. 19552

Date: 11/18/2014

Benton County Surveyor's Office  
 Jerome C. Wittstock, County Surveyor  
 Minnesota License No. 19552

**Statement of Evidence:****D083**

East Quarter of Section 8, Township 38 North, Range 31 West, East Langola Township,  
 4<sup>th</sup> Principal Meridian, Benton County, Minnesota.

1852 Original US General Land Office survey set a wood post at this location and bearing trees were recorded.

10" Bur Oak N 54 W 84 links

10" Bur Oak N 72 E 68 links

1931 County Engineer's Notebook No. 64 contains road survey for CR "A" (21) by H. G. Elletson. Survey notes road intersection north-south and east at 2640 feet north of the SE corner and 2672.0 feet south of the NE corner.

1957 County Engineer's Notebook No. 206 contains a survey for CSAH No. 21 running from this corner north on the section line. Corner is shown as an iron in center of road with CR 40 east. Ties are the same as listed below in 1959. Stationing gives distance of 2661.05 feet to the NE corner.

1959 County Surveyor's Record Book 2, page 100, notes an iron at the corner with the following reference ties.

Sign Post W 20.6

PP SW 53.35

18" Bur Oak NE 60.15

Also on this page in 1967

PP SW 52.65

1990 Paul Wellen, LS 10461, found a 1" solid pin (down 1.0) in center of north-south road and in line with road east. He left iron and filed a Certificate of Location (#201474). Shows tie of 52.40 feet SW to a PP.

2003 6/25/03 Surveying & Engineering Professionals, Inc. found a cast iron monument in center of north-south road. Measured 2657.25 feet to the NE corner and 2650.66 feet to the SE corner.

County Coordinates determined from SEPI traverse:

NAD 83 (1996 Adjustment)

N- 188192.305

E- 457219.476

2014 The Benton County Surveyor's Office found the 1" iron pin down 1.0 feet below the road surface. The iron falls at the intersection of centerlines north-south and east as described from 1931 forward. No evidence of the cast iron monument reported in 2003 was found, though the coordinates fit the found iron pin. The iron pin is accepted as marking the corner position.

# CERTIFICATE OF LOCATION OF GOVERNMENT CORNER

EAST 1/4 Corner of Section 8, Township 38 N, Range 31 W, 4TH P.M.

STATE OF MINNESOTA, County of BENTON

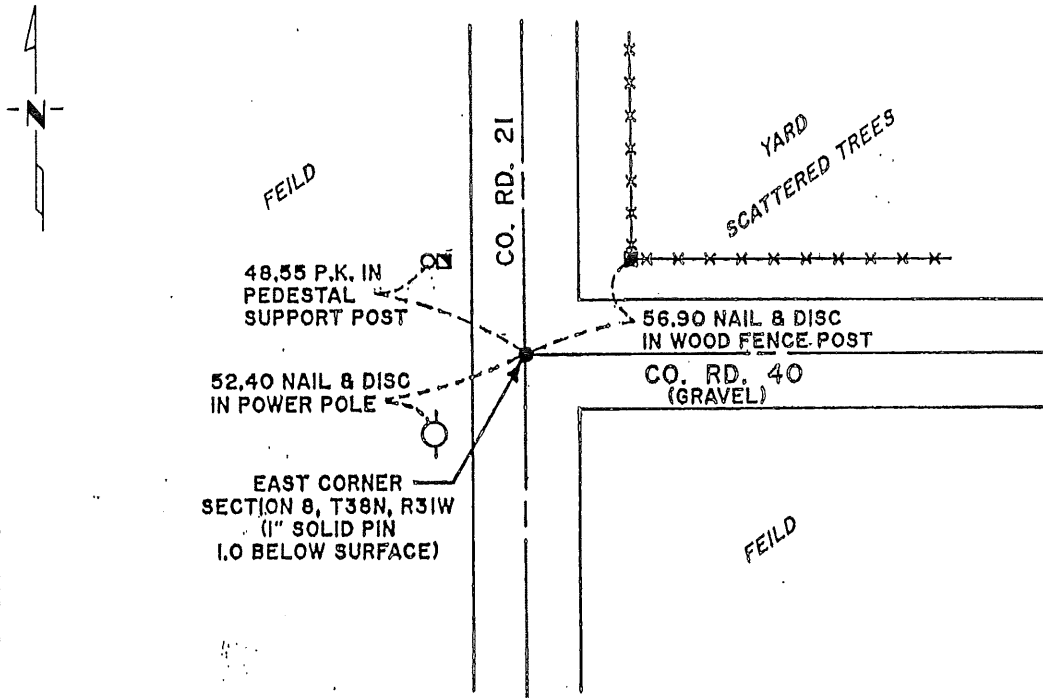
At the corner location shown on the sketch:

On 8/22/90 found a 1 inch SOLID PIN (1.0 FEET BELOW SURFACE)  
DATE

left monument as found,  lowered monument,  removed monument (explain)

On \_\_\_\_\_ placed a \_\_\_\_\_  
DATE

### SKETCH OF REFERENCE TIES



Statement of evidence relative to this corner location is on back of page.

I hereby certify that this document and the data contained herein was prepared by me or under my direct supervision.

*Paul Miller* 1/24/91  
SIGNATURE DATE

Registration No. 10461

- Land Surveyor,  Professional Engineer
- County Surveyor,  County Engineer

### OFFICE OF THE COUNTY RECORDER

County of \_\_\_\_\_

I hereby certify that this document was filed in the Co. Recorders office at \_\_\_\_\_ .M. on the \_\_\_\_\_ day of \_\_\_\_\_ A.D., 19 \_\_\_\_\_

County Recorder \_\_\_\_\_

By \_\_\_\_\_, Deputy

DOCUMENT NO. \_\_\_\_\_

Statement of Evidence:

EAST QUARTER CORNER, SECTION 8, T38N, R31W, of the 4TH PRINCIPAL MERIDIAN

1. During the G.L.O. Survey of 1852, Mr. Edward James Jr., a U.S. Deputy Surveyor, set a wood post to mark this corner.
2. The Benton County Surveyor records indicate that in 1967, J. Kotsmith, Benton County Surveyor, set a iron at this location with three (3) reference ties.
3. On August 22, 1990, Paul E. Wellen & Associates, Inc., found a 1 inch solid iron pin in the center line intersection of Benton County Road 21 and Benton County Road 40. We accepted said iron pin as the one set by Mr. Kotsmith and left it as found and made new reference ties as indicated.

201474

OFFICE OF  
BENTON COUNTY RECORDER  
BENTON COUNTY, MN  
CERTIFIED TO BE FILED  
AND/OR RECORDED ON

FEB 25 8 22 AM '91

ALICE S. ENGELMEYER  
COUNTY RECORDER

BY *[Signature]* DEPUTY