

Certified, Filed and or Recorded on
September 12, 2018 2:19 PM

BENTON COUNTY MINNESOTA
CHERYL L. KANTOR
COUNTY RECORDER

By: 

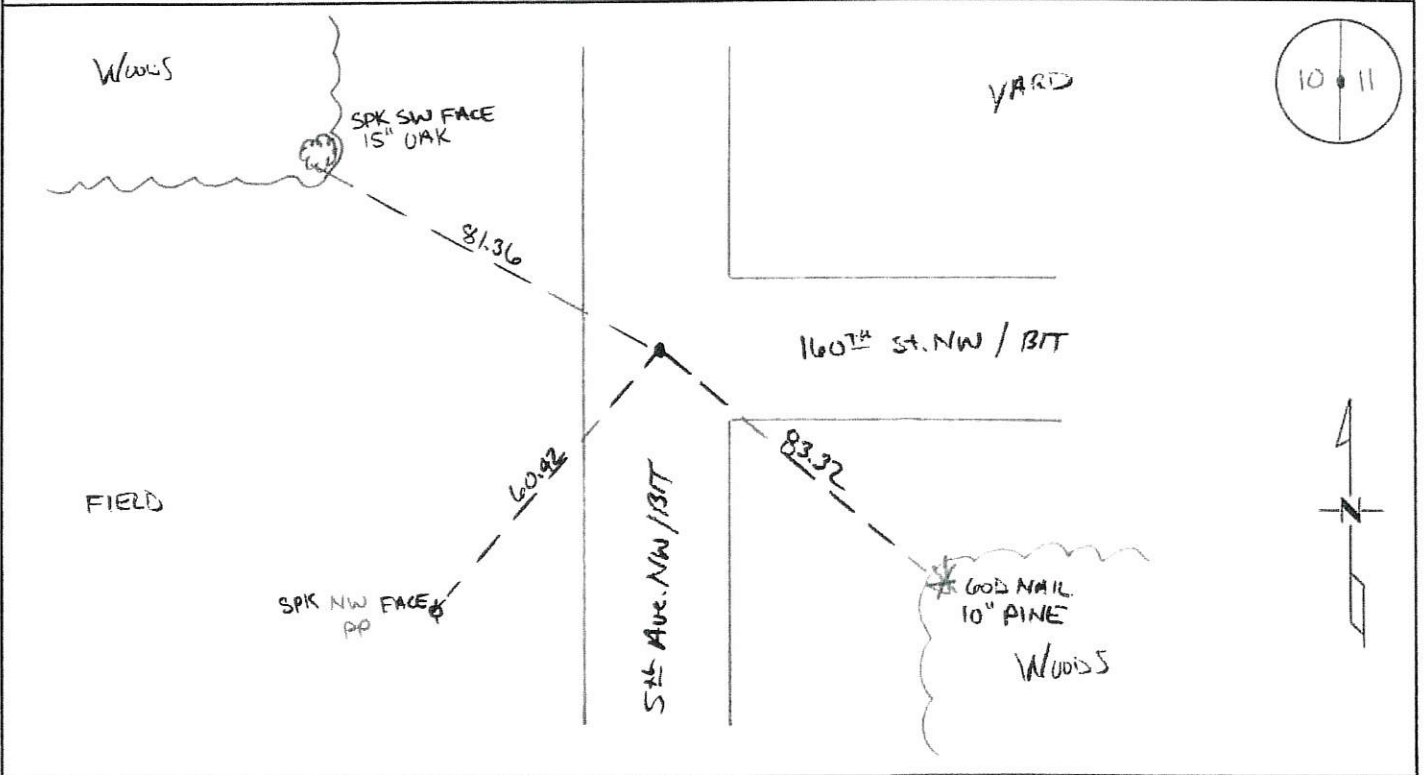


CERTIFICATE OF LOCATION OF GOVERNMENT CORNER

EAST QUARTER Corner of Section 10, Township 38, Range 31
4TH Principal Meridian, State of Minnesota, County of Benton

At the corner location shown on the sketch:

- On 03/13/2014 found a CAST IRON MONUMENT DOWN 0.5'
6/11/2018 found 8" x 10" x 17" granite stone under CIM
- left monument as found lowered monument removed monument (explain)
- On 7/2018 placed an 1/2" x 15" iron pipe capped 19552
after corner excavation.



Statement of evidence for this corner location is on back of this page.

I hereby certify that this survey, plan, or report was prepared by me or under my direct supervision and that I am a duly Licensed Land Surveyor under the laws of the state of Minnesota.

Signature Jerome C. Wittstock
Jerome C. Wittstock, PS, CFedS, Benton County Surveyor
License No. 19552

Date: 31 Aug. 2018

PAGE 1 OF 2

Benton County Surveyor's Office
 Jerome C. Wittstock, County Surveyor
 Minnesota License No. 19552

Statement of Evidence:**D103**

East Quarter of Section 10, Township 38 North, Range 31 West, East Langola Township,
 4th Principal Meridian, Benton County, Minnesota.

1852 Original US General Land Office survey set a wood post at this location and bearing trees were recorded.

8" Bur Oak	S 63 ½ E	153 links
6" Bur Oak	N 72 ½ W	44 links

1915 County Surveyor's Record Book 2, page 80, notes that J.P. Soderstrum set a stone using Gov't BT. Record Book A, Map No. 8, gives distance of 40.32 chains (2661.12 feet) to SE corner of Section 10 and 79.04 chains (5216.64 feet) to the West ¼ corner of Section 10. He made new ties:

6" Br. Oak	S 32 E	93 links
T.P.	N 42 ½ E	48 links

1916 County Surveyor's Record Book 2, page 104, notes Soderstrum found stone set in 1915 form Gov't BT with the same reference ties.

1934 County Engineer's Notebook No. 7line4 contains survey for Road "O" running from east to west and terminating at this corner. Notes corner as a hub with roads running north-south-east. Ties:

Br. Oak	SE	61.4'
Cor FP	NE	43.5'

Stationing gives distance of 5374.3 feet to the East ¼ corner Sec. 11.

1999 William Lunser, LS 9394, set a cast iron monument at the intersection of roads north/south/east. He filed a Certificate of Location (Doc. No. 262732). He notes a distance of 5379.32 feet to the East ¼ corner Sec 11 and a distance of 2668.48 feet to the NE corner Sec 15.

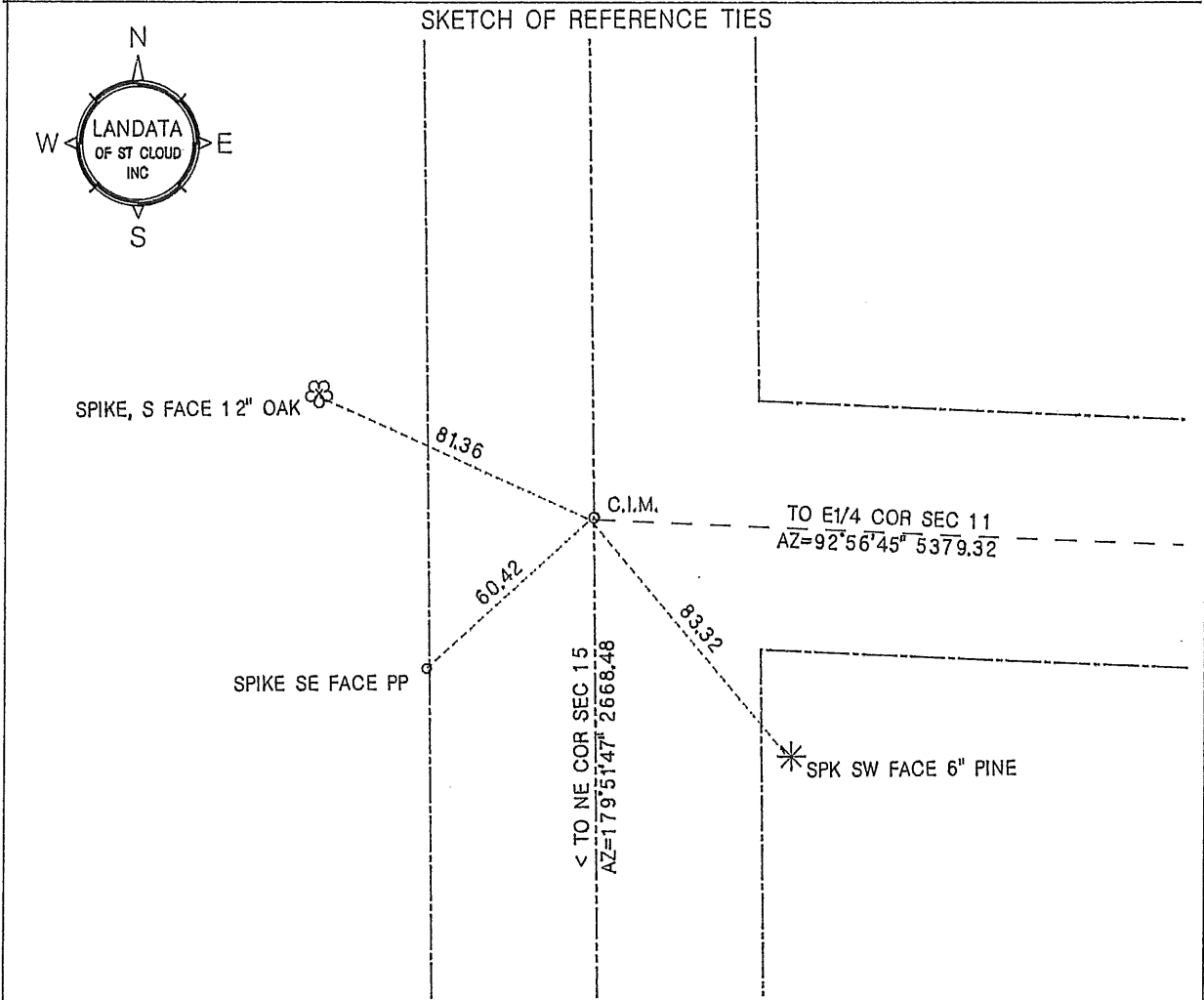
2005 Found CIM.
 County Coordinates Obtained by GPS to a CIM:
 NAD 83 (1996 Adjustment)
 N- 188313.830
 E- 467896.321

2018 The Benton County Surveyor's Office found the CIM, verified the coordinate position; and excavated a 11-foot x 11-foot hole to original soil. Down 3 feet an 8 inch x 10 inch by 17 inch granite stone was found planted upright. The stone is believed to be the stone set from original BT in 1915. The stone was found under the CIM set by Lunser in 1999. A 1/2 inch x 15 inch iron pipe capped 19552 was set to mark the obliterated corner position.

CERTIFICATE OF LOCATION OF GOVERNMENT CORNER

EAST QUARTER corner of Section 10, Township 38, Range 31, 4th P.M.
Benton County, Minnesota.

On Mar 24, 1999, A Benton Co, Cast Iron Monument (C.I.M.) was placed at this location.



Statement of evidence relative to this corner location on back of page

I hereby certify that this document and the data contained herein was prepared by me or under my direct supervision.

William F. Lunser 11/1/99
William F. Lunser, L.S. Date

Mn Reg No 9394

OFFICE OF THE COUNTY RECORDER
Benton County, Minnesota

I hereby certify that this document was filed in this office at ___:___ .M. on the ___ day of _____, 19__.

County Recorder _____

By _____ Deputy

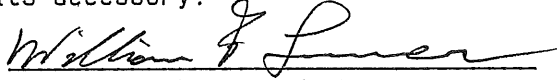
DOCUMENT NO. _____

STATEMENT OF EVIDENCE:

County Surveyor's book in the office of the Benton County Highway Dept indicate a stone monument was placed at this corner.

A search of the area failed to uncover the marker. Occupation lines consist of centerlines of roads south, north and east.

After comparing measured distances to those of the G.L.O. I consider this corner to be obliterated with the intersection of the road centerlines servings as its accessory.



William F. Lunser, L.S.

262732

OFFICE OF
BENTON COUNTY RECORDER
BENTON COUNTY, MN
CERTIFIED TO BE FILED
AND/OR RECORDED ON

Dec 1 8 52 AM '99

ALICE S. ENGELBERG
COUNTY RECORDER

BY  ~~REC'D~~