

Certified, Filed and or Recorded on
October 28, 2014 12:57 PM

BENTON COUNTY MINNESOTA
MARILYN J NOVAK
COUNTY RECORDER

By: CK

G -- V -- 1

CERTIFICATE OF LOCATION OF GOVERNMENT CORNER

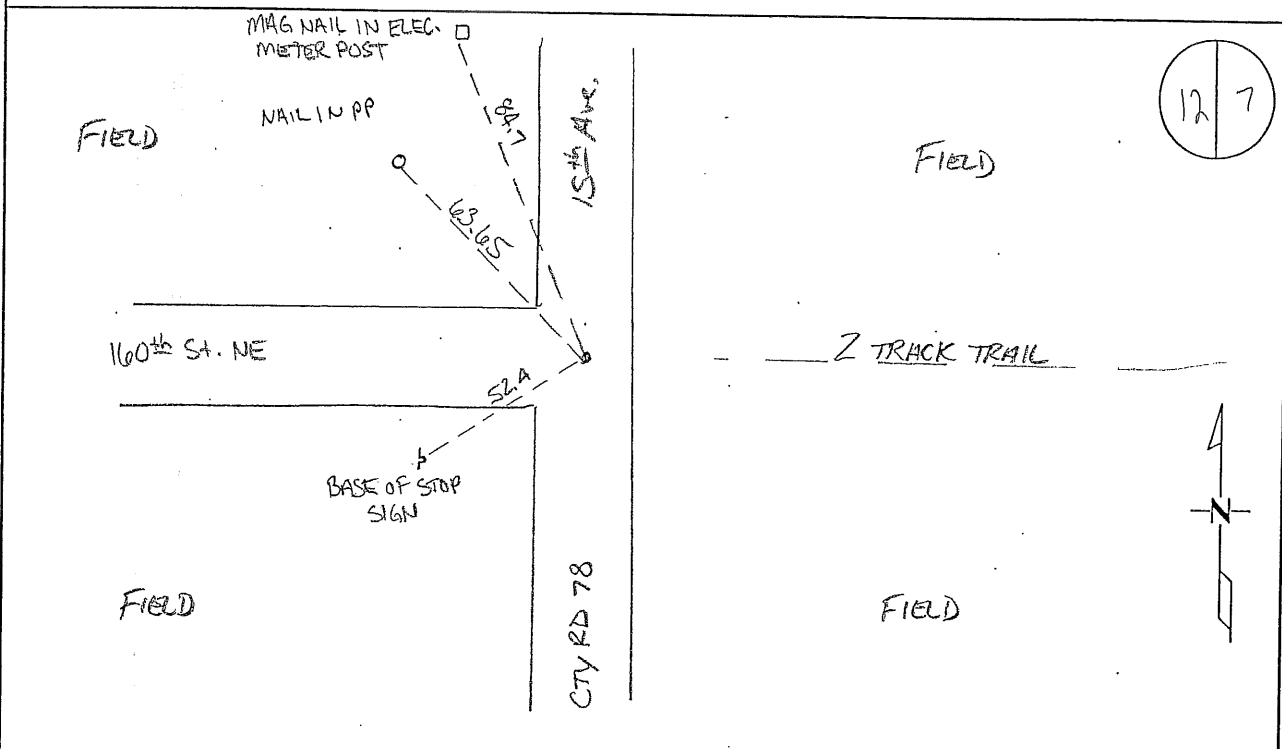
EAST QUARTER Corner of Section 12, Township 38, Range 31
4TH Principal Meridian, State of Minnesota, County of Benton

At the corner location shown on the sketch:

On 08/08/2011 found a CAST IRON MONUMENT

left monument as found lowered monument removed monument (explain)

On _____ placed on _____



Statement of evidence for this corner location is on back of this page.

I hereby certify that this document was researched and prepared by me or under my direct supervision and that I am a licensed Land Surveyor under the laws of the State of Minnesota.

Signature Jerome C. Wittstock
Benton County Surveyor
License No. 19552

Date: 28 Oct. 2014

Benton County Surveyor's Office
 Jerome C. Wittstock, County Surveyor
 Minnesota License No. 19552

Statement of Evidence:**D123**

East Quarter Corner of Section 12, Township 38 North, Range 31 West, East Langola Township, 4th Principal Meridian, Benton County, Minnesota.

- 1849 Original US General Land Office survey set a wood post in a mound with a pit 6 links south at the corner location.
- 1934 County Engineer's Notebook No. 74 contains survey for Road "O" running from north to west. Notes corner as a spike with roads running north-south-west. Ties:
- | | | |
|---------|----|------|
| TP | NW | 42.0 |
| Fen Cor | SW | 45.4 |
- Stationing gives distances of 2690.8 feet to the NE corner and 5278.3 feet to the West ¼ corner.
- 1941 County Engineer's Notebook No. 151 contains a road survey for CAR 41 running south to north on township line. Corner is shown marked by a hub set in center of road on fence lines east and west. Ties:
- | | | |
|----|----|-------|
| FP | W | 53.7' |
| FP | SW | 61.3' |
- Stationing gives distances of 2693.6 feet to the SE corner and 2690.8 feet to the NE corner. Note: meets CAR 22.
- 1962 County Engineer's Notebook No. 230 contains a road survey for CSAH 15 running south to north on township line. Corner is shown marked by a spike set in center of road with CH 40 running west. 1964 ties are listed below to a placed iron. Stationing gives distances of 2694.3 feet to the SE corner and 2691.4 feet to the NE corner being a POT.
- 1964 County Surveyor's Record Book 2, page 108, notes an iron at the corner with the following reference ties.
- | | | |
|----|----|-------|
| TP | SE | 38.35 |
| PP | NW | 63.65 |
- 1990 County Highway notes show: found a 1" solid pin and set a cast iron monument over it.
- 2011 The Benton County Surveyor's Office found the CIM set in 1990 in the north-south centerline and on the centerline of 160th St. NE to the west. Distances north and south fit the 1934 and 1941 distances within a foot, and the 1934 distance to the west quarter corner within four feet. The CIM is accepted as marking the corner position.

Coordinates Obtained by GPS
 NAD 83 (1996 Adjustment) to the CIM:

N- 188452.568
 E- 478546.336